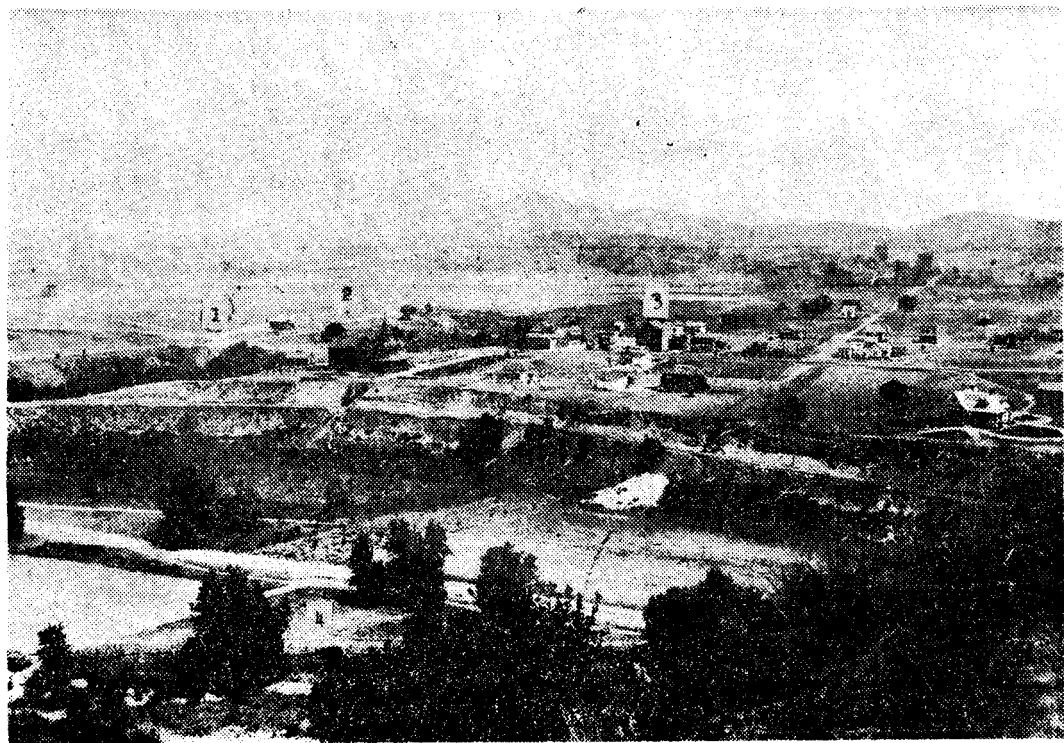
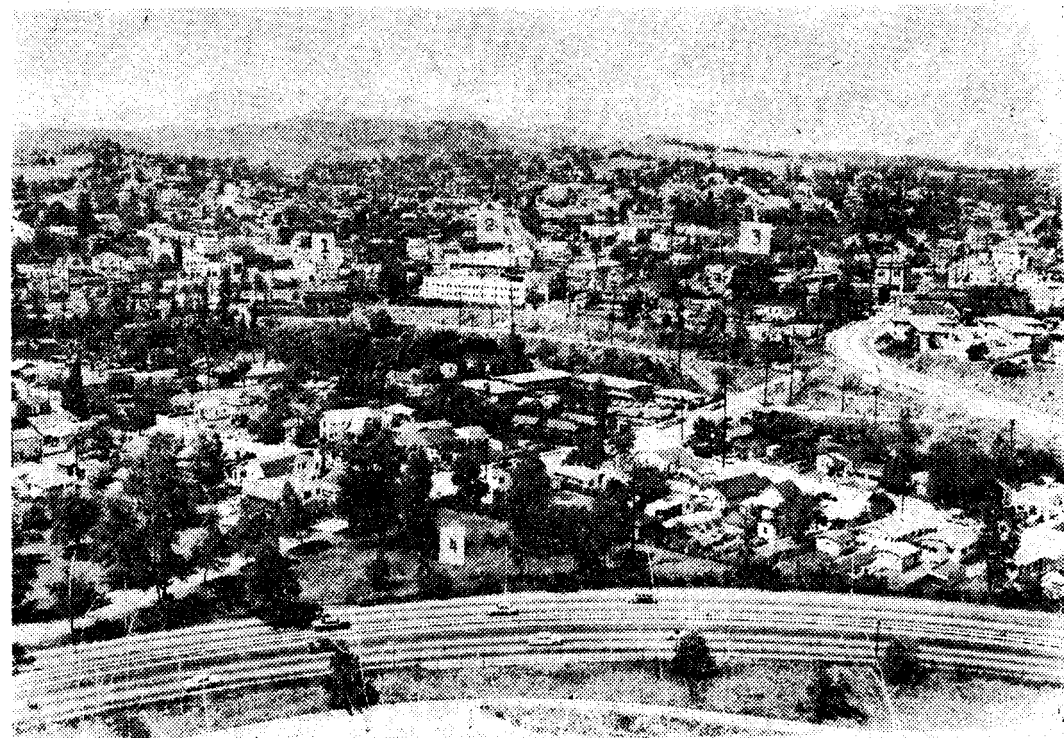


Garvanza area---1887



RECOGNIZE THIS SCENE?—This is what the Garvanza section of Highland Park looked like back in 1887. Number 1 is the present location of York Junction; number 2 is North Figueroa St. near the present site of Luther Burbank Junior High; number 3 is Miller's Hill, soon to be demolished; number 4 is section of Arroyo Seco Park near the big curve of the Pasadena Freeway. To see how things have changed, match the numbers up with those in bottom photo, taken from same hill.

(Security First National Bank Historical Collection)



GARVANZA, 1959 — For an interesting comparison of the changing landscape, match up the numbers one through four in these two photographs taken 72 years apart.

J. F. Newton

MAY 19 1959 (11th in a Series—Green Sheet Photo)