

ANOTHER LANDMARK FALLS

Santa Fe demolishes Highland Park depot

Old station
closed doors
here in 1940

Death came 23 years late this week to Highland Park's Santa Fe Railroad station at Ave. 57 and Marmion Way.

A demolition crane wheeled up to the little station house Wednesday and ate it away with hungry bites from its bucket.

The passenger station had been in disuse since before 1940.

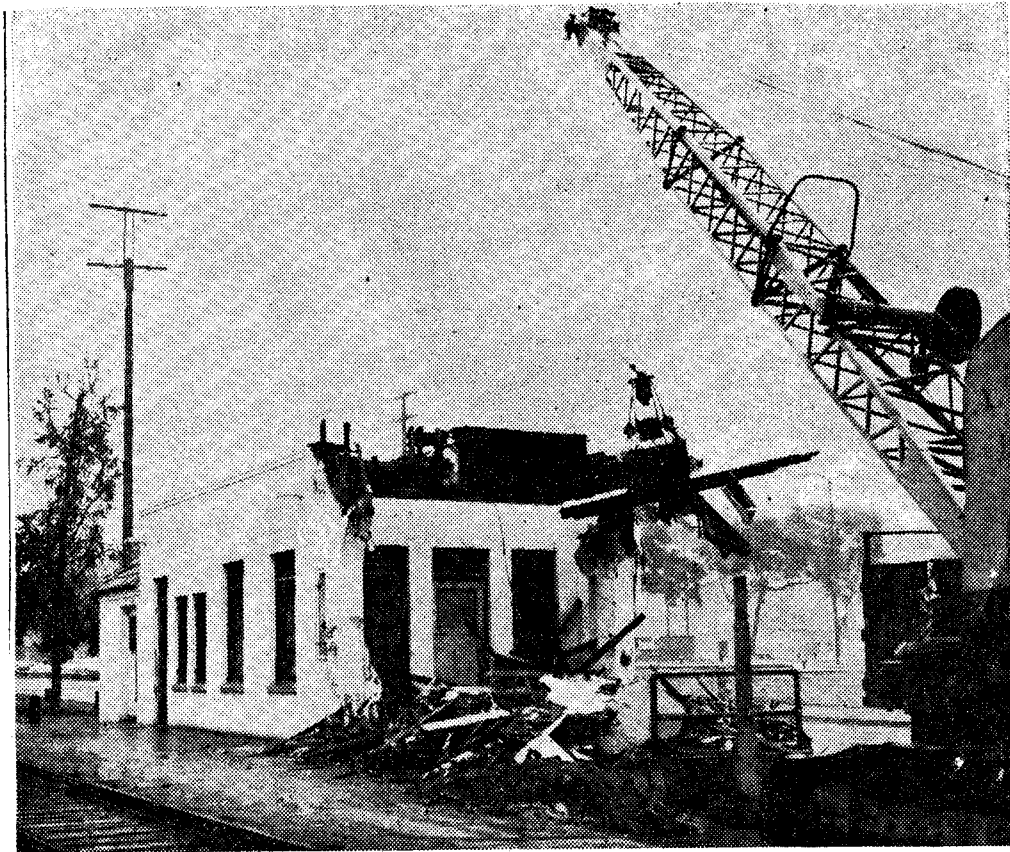
Santa Fe Railroad officials said although the building had been idle for over two decades it was left standing in hopes its life could be reborn at another location. It was decided, however, that due to its construction moving would be impractical.

BUILT IN '25

Built in 1925, the station was in normal usage for "10 or 15 years." It was constructed to alleviate congestion at Union Station and Santa Fe officials hoped the travelling public "would find it much more convenient in the future to utilize the Highland Park Station."

The size of the station was not impressive — a one-story frame and stucco structure, 15 feet wide, 55 feet long — but was equipped with what was termed "every service the public demands."

Features included waiting rooms, ticket offices, baggage rooms and "ample" parking for automobiles and taxis. The only disadvantage was Marmion Way; it wasn't paved in 1925.



STATION COMES DOWN — Highland Park's Santa Fe Railroad station disappears in the steel jaws of a crane last Wednesday after standing idle for over 23 years. Santa Fe chose to raze the structure when it was decided it would not be feasible to move it to another location. It opened in 1925.

Construction on the station began in mid-April of '25 and was opened for business the first day of July. From that time until the late 30's it remained busy, with local incoming and outgoing passengers making Highland Park their train headquarters. Even those persons who didn't like trains found the little station a convenience.

Steamship tickets to such cities as San Francisco and Seattle were sold in large amounts.

The reason for the station

(Continued on Page 4)

TRAIN DEPOT DEMOLISHED

(Continued from Page 1)

being shut down after such a short life was given in a brief statement from Santa Fe Friday: "The volume of business went down. Nobody got on and nobody got off."