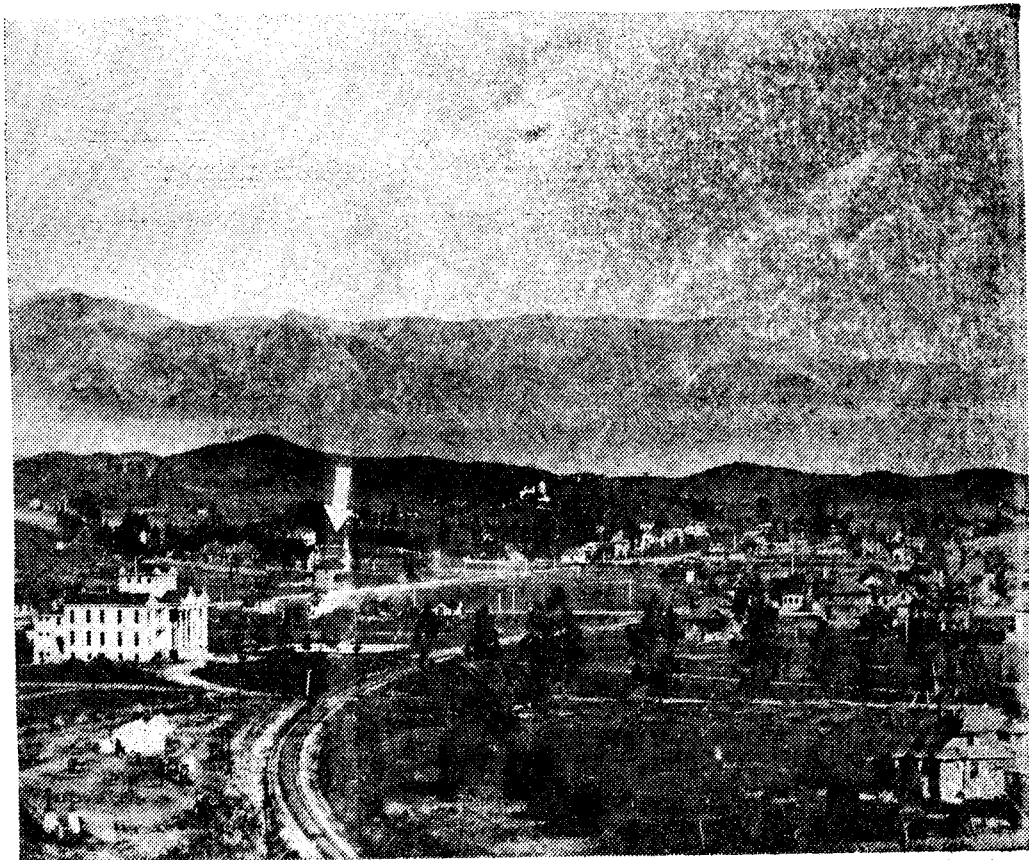


A long line of Monte Vista Schools

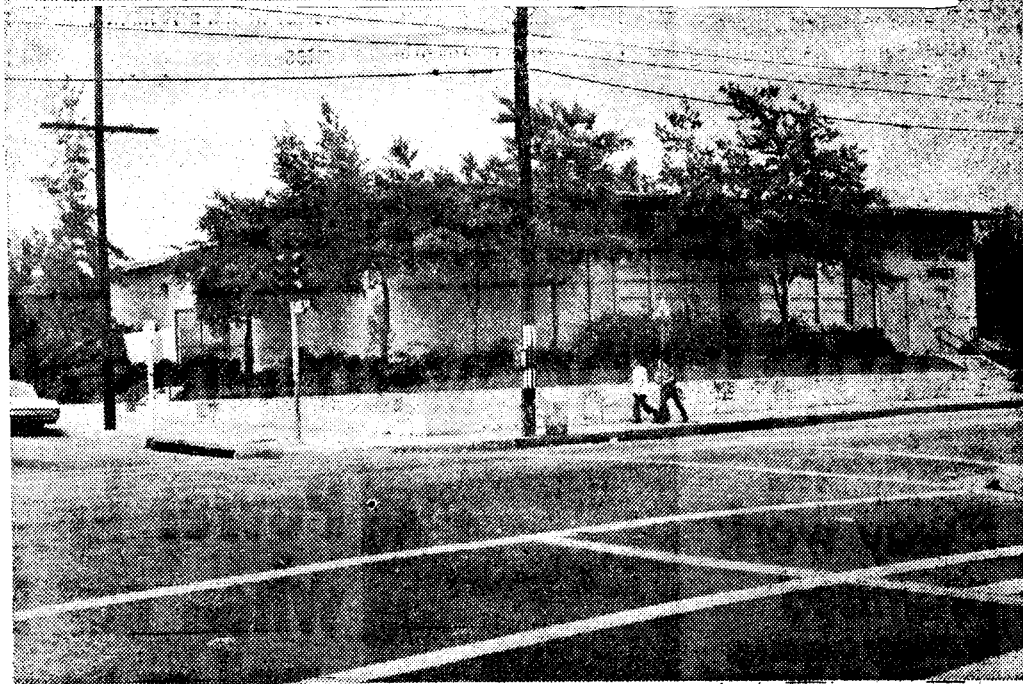
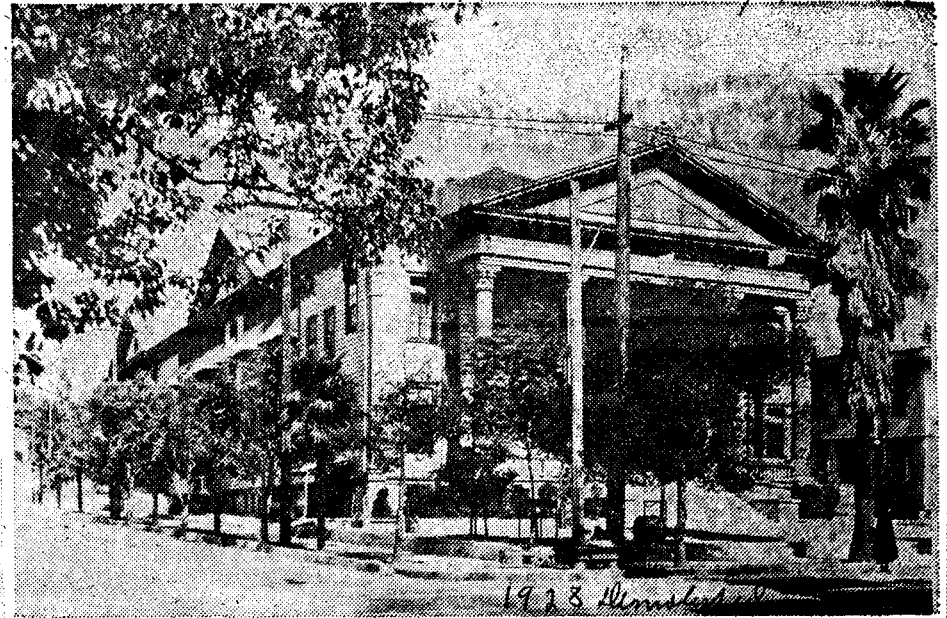
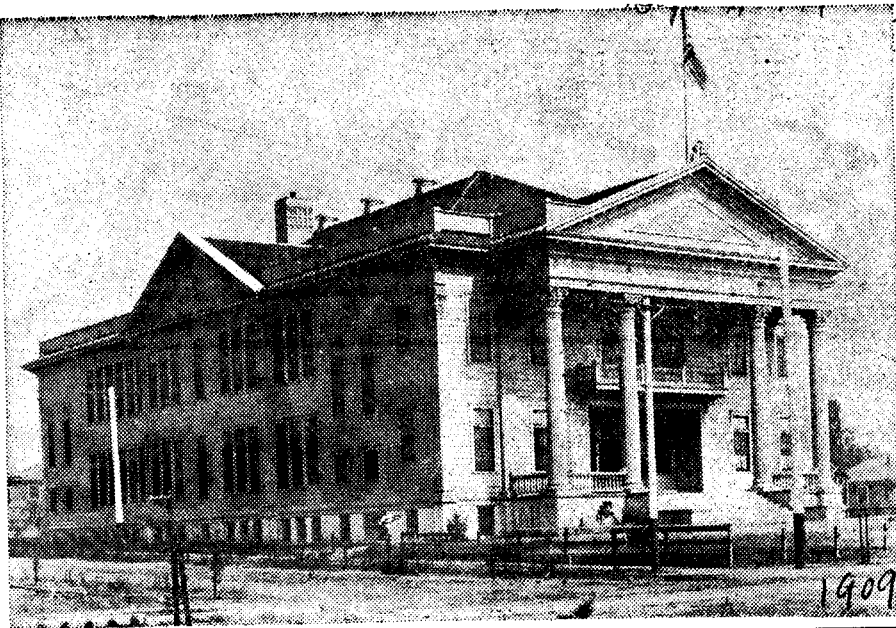
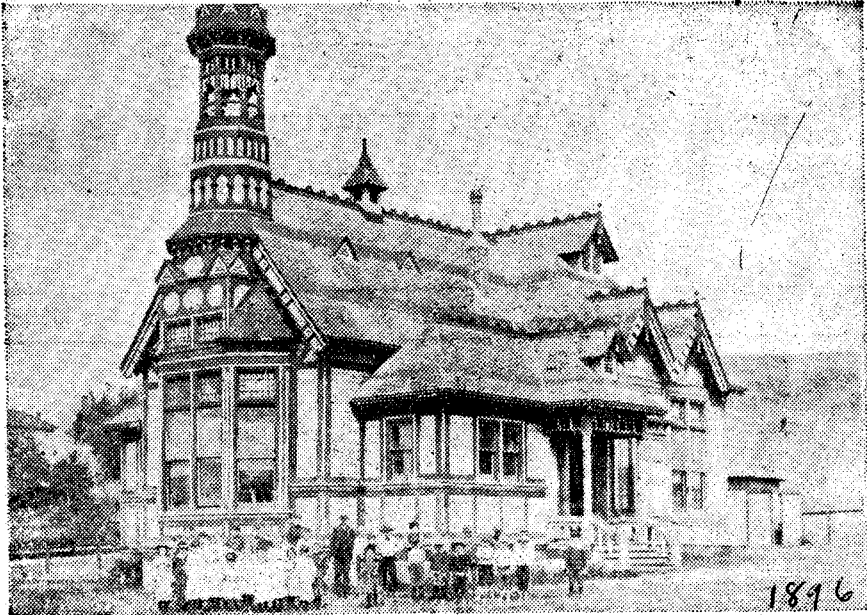
Monte Vista Elementary School's growth through four different buildings mirrors the growth of Highland Park. The school, located at the corner of Avenue 54 and Monte Vista Street, has occupied the same site since the first Monte Vista School was built in 1896. Then known as "Highland Park School," it boasted one teacher and 76 knicker and bloomer-clad students. A second building (center) was built in 1909 and the old one was retired and moved down the street to end up as an apartment house. Just before its demolition in 1928, the second school (right) seemed crowned in the fast-growing residential community. The third school (picture not available) served the community from 1928 to 1958 when it was torn down for the fourth and present school, at 5423 Monte Vista St.



A "country" school

Known as Highland Park School, Monte Vista Elementary School has occupied the same location for 75 years. However, back in 1896 the school (see arrow) served a largely rural community which had just begun to grow. In the foreground is Occidental College before it moved to Eagle Rock. The railroad tracks (foreground) and the "Smith Castle" atop Mt. Angelus, along with Monte Vista Street (white line in rear of Oxy) still remain. The picture was taken from the slopes of Mt. Washington near Avenue 50 and Pasadena Avenue (now N. Figueroa St.).

Sept 19, 1971



Monte Vista School today

Sept 19, 1971

After 75 years, Monte Vista Elementary School continues to be a viable part of Highland Park. Quite a change has come over the school, which grew from a student body of 76 to one of 600. The trees that grew up from a sparse rural setting reached their peak, were cut down, and new trees have now replaced them, but the school continues in the same site it occupied in 1896.