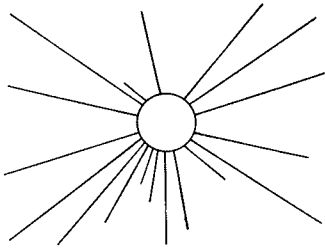


LOS ANGELES —
Highland Park

FIVE

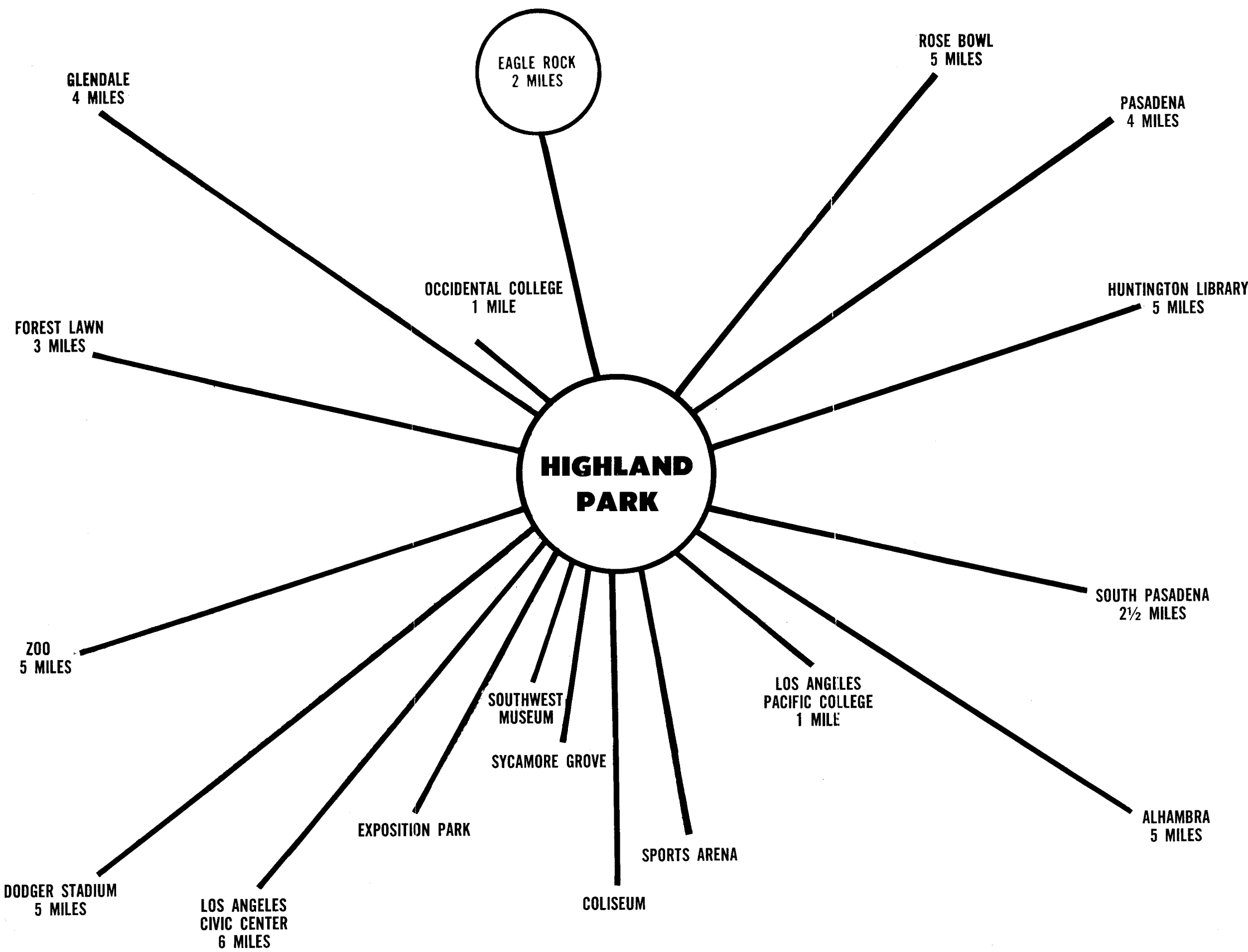


SEP 26 1970

ARROYO SECO BRANCH LIBRARY

HIGHLAND PARK AND EAGLE ROCK

LOCATED AT THE HUB OF THE WHEEL
AND ONLY 6 MILES FROM DOWNTOWN LOS ANGELES,
HIGHLAND PARK ENJOYS ALL THE BENEFITS
OF BIG CITY LIVING
PLUS THE COMFORT AND PLEASURE
OF RURAL COMMUNITY LIFE.



**HIGHLAND
PARK**

EAGLE ROCK
2 MILES

ROSE BOWL
5 MILES

PASADENA
4 MILES

HUNTINGTON LIBRARY
5 MILES

SOUTH PASADENA
2½ MILES

ALHAMBRA
5 MILES

LOS ANGELES
PACIFIC COLLEGE
1 MILE

SPORTS ARENA

COLISEUM

EXPOSITION PARK

SYCAMORE GROVE

SOUTHWEST
MUSEUM

LOS ANGELES
CIVIC CENTER
6 MILES

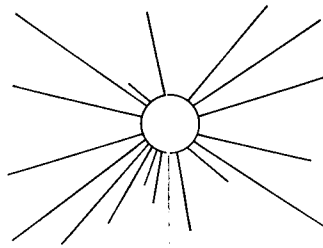
ZOO
5 MILES

DODGER STADIUM
5 MILES

FOREST LAWN
3 MILES

GLENDALE
4 MILES

OCCIDENTAL COLLEGE
1 MILE



HIGHLAND PARK AND EAGLE ROCK

only 6 miles from the Civic Center of Los Angeles,
the 3rd largest city in the United States.

Highland Park lies within the city limits of Los Angeles,
thereby enjoying the benefits from an alliance with a
Metropolitan City, Schools, Parks, Police and Fire protection,
Municipal Water and Power and many other services, such as
sewer and street maintenance.

Highland Park has all these advantages, in addition to those
of being in a community not subject to the tremendous problems
incident to life in a congested area.

Highland Park has an elevation of 650 feet above sea level,
at its lowest point, and has been designated, because of
its location as one of the healthiest residential sections of
the City by the Medical Fraternity. Its population is about
60,000, mostly home owners of a middle income . . . people who are
considered the backbone of America.

Highland Park offers potential residents all city advantages
and a rural atmosphere where neighbors are neighbors in
every sense of the word.

Highland Park is surrounded by hills, some of which are
undergoing development. One can have a choice of a home on
the level or one with a view. The prices vary as to locations
and developments. A model home can be bought
from \$12,000 on up to \$25,000, either for cash or terms.

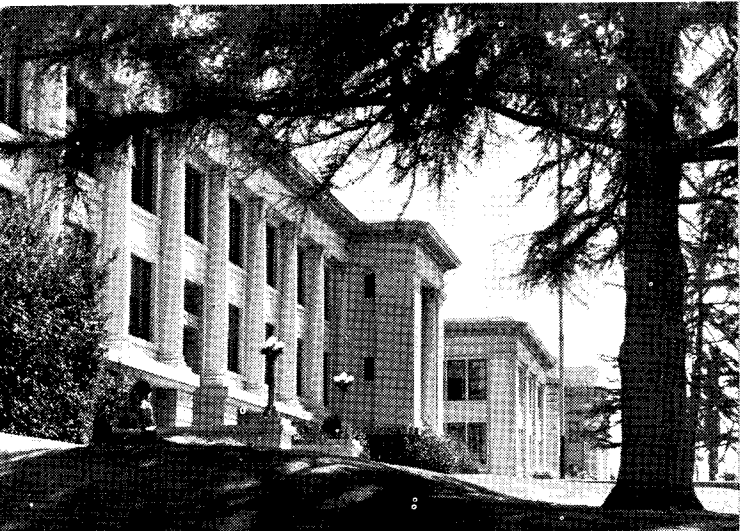
Highland Park has never been boomed, but has had a steady
growth of substantial people who have found it an ideal place
to live and work. Recently, new apartment buildings, courts
and multiple dwelling units have been built and many more
are in the planning stage.

Highland Park is truly a Hub City, as shown on the map,
surrounded by so many things and places of interest, almost
within walking distance, to satisfy a large segment of society
with its schools, colleges, churches, YMCA, sports,
bowling, parks, baseball, museums, library, music, Highland
Park Symphony, an elder citizens playground and can boast
of one of the finest swimming pools in the State.

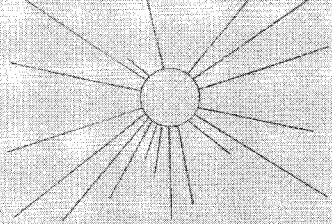
HIGHLAND PARK CHAMBER OF COMMERCE
AND THE NORTH EAST REALTY BOARD



PRESBYTERIAN CHURCH, one of the 48 churches in Highland Park.



FRANKLIN HIGH SCHOOL known for its high standards.
below: The campus at OCCIDENTAL COLLEGE.



COLLEGES Within the city limits of Highland Park are two colleges. Occidental College with 1,500 students and Los Angeles Pacific College with 400 students. Both of these colleges are well known for their high standard of scholastic attainments.

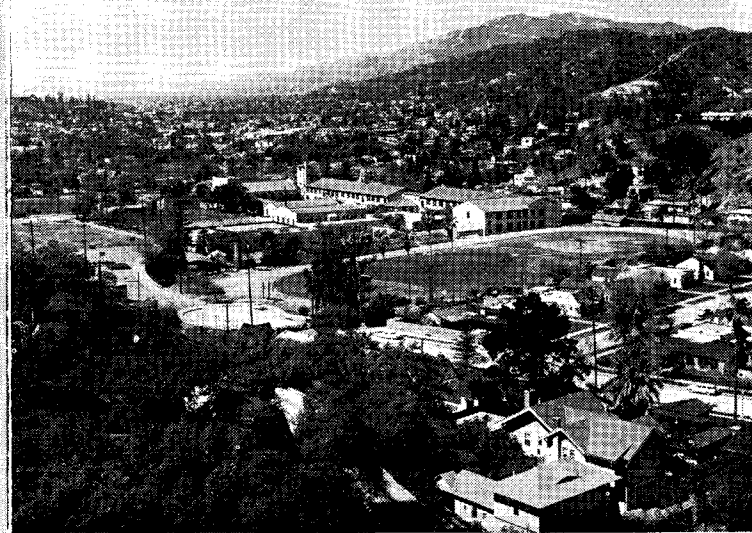
SCHOOLS Highland Park is a part of the Los Angeles City School System. It is a matter of common knowledge that Los Angeles schools rate among the highest educational systems in the world. Franklin High School and Burbank Junior High School are a pride and joy to all who have gone through them. Eight elementary schools serve the area.

CHURCHES The religious needs of the community are served by many denominations. The Catholics, Latter Day Saints and Free Methodists have comparatively new churches. There are Presbyterian, Lutheran, Nazarene, Seventh Day Baptist, Four-square, Science of Mind, Christian Science, Assembly of God, Jewish and others. A total of 48 in number.

BOWLING Three large Bowling Centers, provide family fun. One, at York and Eagle Rock Boulevards, features a fine restaurant and coffee shop with ample parking. Two other convenient locations are Figueroa and Colorado Blvd., and Figueroa at Ave. 56.

BASEBALL The Dodger Baseball Stadium, at a cost of more than \$12,000,000 is only a stone's throw from Highland Park. When completed it is destined to be the world's finest.

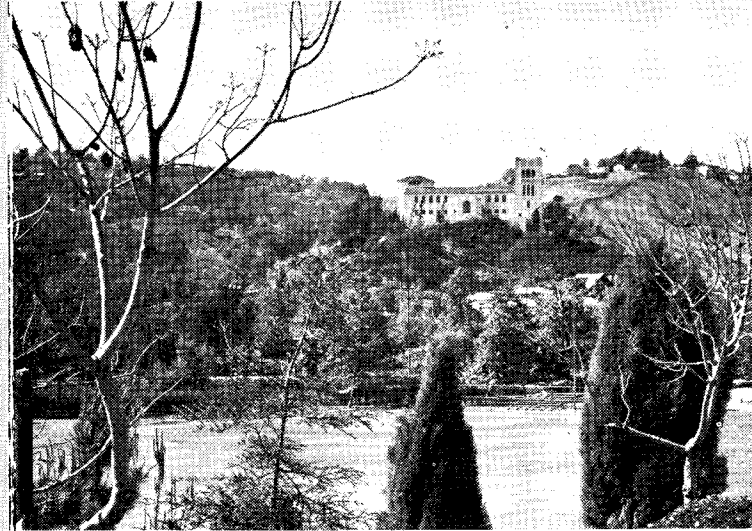
SYCAMORE GROVE This park has a national reputation, with its beautiful setting among some of the oldest sycamore giants in the state. Adjacent to the Pasadena Freeway, it is the ideal place to hold the picnics that have been held here for over 50 years.



Scenic View of EAGLE ROCK



One of many new Apartments designed for family fun.



The SOUTHWEST MUSEUM viewed from Arroyo Seco Park.

OTHER
POINTS
OF
INTEREST

SHOPPING facilities are conveniently located to every part of town. Figueroa street and York Blvd. both have a variety of shops and markets.

