

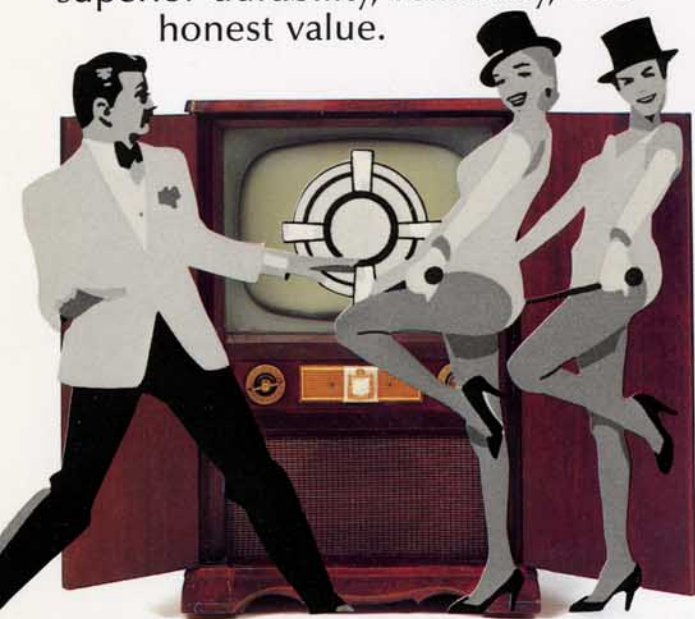
AMERICA GREW UP LISTENING TO PACKARD BELL.



IT STILL DOES.

It began in a time when America relied on its radios for news, information, and entertainment. And when America listened to the radio, they listened to Packard Bell.

From the start, every radio was designed, engineered, and manufactured to rigorous quality controls. And from those standards came the Packard Bell reputation for superior durability, reliability, and honest value.



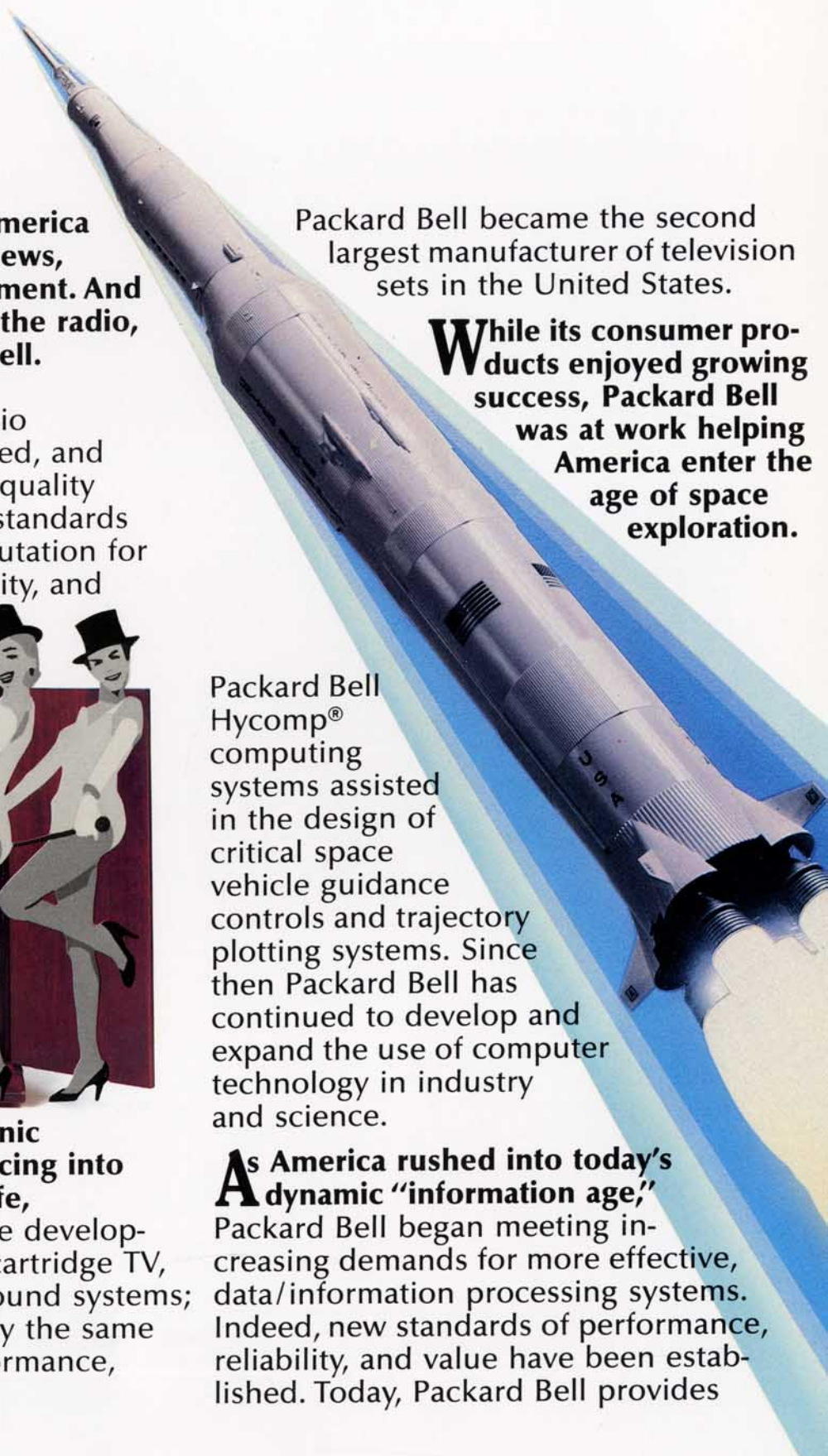
Recognizing that electronic technology was advancing into every facet of American life, Packard Bell pioneered the development of color television, cartridge TV, and four channel audio sound systems; each system hallmarked by the same standards of quality, performance, and value. As a result,

Packard Bell became the second largest manufacturer of television sets in the United States.

While its consumer products enjoyed growing success, Packard Bell was at work helping America enter the age of space exploration.

Packard Bell Hycomp[®] computing systems assisted in the design of critical space vehicle guidance controls and trajectory plotting systems. Since then Packard Bell has continued to develop and expand the use of computer technology in industry and science.

As America rushed into today's dynamic "information age," Packard Bell began meeting increasing demands for more effective, data/information processing systems. Indeed, new standards of performance, reliability, and value have been established. Today, Packard Bell provides



business, industry, government, and professional users with the technology and tools they need to meet expanding requirements for increased productivity.

Within the technological marketplace, Packard Bell has gone far beyond traditional user support programs.

Believing that end-users, distribution, and manufacturers should have barrier-free service and communication, Packard Bell has developed a unique approach to establishing truly synergistic relationships:

Packard Bell Financial Services...

provides the vital financial support needed to insure successful operations: consumer and commercial credit, leasing programs, insurance and/or extended service programs, and inventory financing all through a single, solid source: Packard Bell.

Packard Bell Information Network...

a unique, interactive, on-line network between users, resellers, and manufacturers.

It allows users to "talk" with other users; to diagnose and solve hardware/software problems.

The network permits dealers and resellers to maintain more



efficient control of inventory, credit, order processing, product availability, and provide their customers with ongoing product information.

Today, Packard Bell business systems and products have gained broad acceptance throughout the United States.

Thanks to an efficient national network of distributors and retailers, and a customer responsive network of technical/service centers across the country, Packard Bell systems are helping increase efficiency and productivity in small business, government, healthcare, educational institutions, and large corporations.

Along with its tradition of quality and performance, Packard Bell is quietly focused on a single concept: success results from setting standards and not just "keeping pace" with them.

COMPUTERS

Packard Bell's newest computer, the PB386 Supreme, features the extraordinary speed and power of a 32-bit, 20MHz 80386 microprocessor.

Compatible with UNIX™, XENIX™ and Concurrent DOS™ operating systems, it easily becomes the heart of a multi-user system. Currently the PB386 runs with all MS-DOS™ based software. More important, when the new OS/2™ operating system becomes available, the PB386 will allow you to maximize that system's vast potential...and yours.

The PB286 Business Computer (AT™ compatible) is designed and engineered expressly to meet user requirements for a powerful, extremely fast and reliable system...a system capable of meeting the demands of even the most information intensive operations. Processing and throughput is significantly faster than other systems in its class. Thanks to a remarkable range of features, the PB286 is an extraordinarily versatile system...a system providing users with an opportunity to maximize their investment by giving them the expandability needed to meet unforeseen needs.

A remarkable design, and uncompromised engineering hallmark the VX88 (XT™ compatible) computer. Its power, performance and full range of user oriented features makes it an ideal system for virtually any business application...including networking. Further, the VX88 offers the capability to connect with a mainframe with the simple addition of a 3270 emulation card. Key to its outstanding performance is a motherboard featuring an 8MHz NEC V40 CPU, 4 channel controller,



The upward compatible PB386 Supreme.

programmable wait state generator, 8 input interrupt control unit, 4 expansion slots, graphics controller, 640KB Main Memory, dual floppy disk drive controller in a space saving small footprint. **Despite its sleek, compact profile the AT™ compatible PB Exec provides users with extraordinary capabilities.** Based on an Intel 80286 microprocessor, the PB Exec features 640KB RAM expandable to 1 MB on the system board, 8/10MHz switchable, two expansion slots (a third is optional), and a range of upgrades including color and monochrome graphic boards that make the system ideal for desktop publishing, CAD/CAM applications, etc.

Throughout the manufacturing process, each Packard Bell computer is subject to uncompromised quality controls...and so each system is fully warranted for a full year.

COLOR & MONOCHROME VIDEO DISPLAYS

Based upon years of experience with television, Packard Bell offers users a remarkably broad range of Video Display Units capable of meeting even the most sophisticated application requirements. Monochrome or color, regardless of screen size, cabinet design, or features, Packard Bell monitors provide crisp, clear, sharp, and undistorted imagery. The line includes basic units with Amber, Green, or White displays...and advanced monitors offering unlimited color palettes. From its newest UNISCAN, a 14" super high resolution, multi-frequency type color monitor to color monitors providing 64 colors, to monochrome monitors ideal for work stations and terminals, each is engineered for flawless performance.



The multi-frequency PB UniScan.

Program to 12x complete

...network which
...SERVICES NETWORK UNIT.
...TO ACHIEVE.

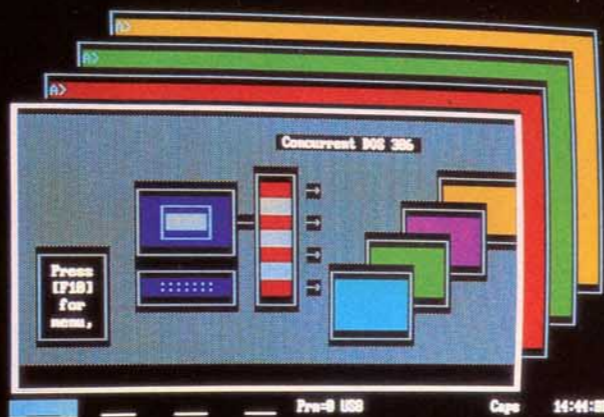
START

Insurance, Credit Purchases

F5
MENU

F7
OUTLINE

F10
QUIT



Press (F10) for menu.
Pro-8 1000 Copy 14:44:38

DESKTOP PUBLISHING ACROSS THE USA



Packard Bell

CLR	CHK	NO/DA	TRANSACTION DESCRIPTION	DIST.	ACCOUNT	T	CH
1001	01/24		Utilities		Personal Checking		
1002	01/24		Auto		Auto Loan		
1003	01/24		Water & Sewer		Auto Loan Info		
1004	01/24		Gas		Auto. Finance		
1005	01/24		Electric		Auto. Finance		
1006	01/24		Phone		Auto. Finance		
1007	01/24		Post Office		Auto. Finance		
1008	01/24		Post Office		Auto. Finance		
1009	01/24		Post Office		Auto. Finance		
1010	01/24		Post Office		Auto. Finance		
1011	01/24		Post Office		Auto. Finance		
1012	01/24		Post Office		Auto. Finance		
1013	01/24		Post Office		Auto. Finance		
1014	01/24		Post Office		Auto. Finance		
1015	01/24		Post Office		Auto. Finance		
1016	01/24		Post Office		Auto. Finance		
1017	01/24		Post Office		Auto. Finance		
1018	01/24		Post Office		Auto. Finance		
1019	01/24		Post Office		Auto. Finance		
1020	01/24		Post Office		Auto. Finance		
1021	01/24		Post Office		Auto. Finance		
1022	01/24		Post Office		Auto. Finance		
1023	01/24		Post Office		Auto. Finance		
1024	01/24		Post Office		Auto. Finance		
1025	01/24		Post Office		Auto. Finance		
1026	01/24		Post Office		Auto. Finance		
1027	01/24		Post Office		Auto. Finance		
1028	01/24		Post Office		Auto. Finance		
1029	01/24		Post Office		Auto. Finance		
1030	01/24		Post Office		Auto. Finance		
1031	01/24		Post Office		Auto. Finance		
1032	01/24		Post Office		Auto. Finance		
1033	01/24		Post Office		Auto. Finance		
1034	01/24		Post Office		Auto. Finance		
1035	01/24		Post Office		Auto. Finance		
1036	01/24		Post Office		Auto. Finance		
1037	01/24		Post Office		Auto. Finance		
1038	01/24		Post Office		Auto. Finance		
1039	01/24		Post Office		Auto. Finance		
1040	01/24		Post Office		Auto. Finance		
1041	01/24		Post Office		Auto. Finance		
1042	01/24		Post Office		Auto. Finance		
1043	01/24		Post Office		Auto. Finance		
1044	01/24		Post Office		Auto. Finance		
1045	01/24		Post Office		Auto. Finance		
1046	01/24		Post Office		Auto. Finance		
1047	01/24		Post Office		Auto. Finance		
1048	01/24		Post Office		Auto. Finance		
1049	01/24		Post Office		Auto. Finance		
1050	01/24		Post Office		Auto. Finance		
1051	01/24		Post Office		Auto. Finance		
1052	01/24		Post Office		Auto. Finance		
1053	01/24		Post Office		Auto. Finance		
1054	01/24		Post Office		Auto. Finance		
1055	01/24		Post Office		Auto. Finance		
1056	01/24		Post Office		Auto. Finance		
1057	01/24		Post Office		Auto. Finance		
1058	01/24		Post Office		Auto. Finance		
1059	01/24		Post Office		Auto. Finance		
1060	01/24		Post Office		Auto. Finance		
1061	01/24		Post Office		Auto. Finance		
1062	01/24		Post Office		Auto. Finance		
1063	01/24		Post Office		Auto. Finance		
1064	01/24		Post Office		Auto. Finance		
1065	01/24		Post Office		Auto. Finance		
1066	01/24		Post Office		Auto. Finance		
1067	01/24		Post Office		Auto. Finance		
1068	01/24		Post Office		Auto. Finance		
1069	01/24		Post Office		Auto. Finance		
1070	01/24		Post Office		Auto. Finance		
1071	01/24		Post Office		Auto. Finance		
1072	01/24		Post Office		Auto. Finance		
1073	01/24		Post Office		Auto. Finance		
1074	01/24		Post Office		Auto. Finance		
1075	01/24		Post Office		Auto. Finance		
1076	01/24		Post Office		Auto. Finance		
1077	01/24		Post Office		Auto. Finance		
1078	01/24		Post Office		Auto. Finance		
1079	01/24		Post Office		Auto. Finance		
1080	01/24		Post Office		Auto. Finance		
1081	01/24		Post Office		Auto. Finance		
1082	01/24		Post Office		Auto. Finance		
1083	01/24		Post Office		Auto. Finance		
1084	01/24		Post Office		Auto. Finance		
1085	01/24		Post Office		Auto. Finance		
1086	01/24		Post Office		Auto. Finance		
1087	01/24		Post Office		Auto. Finance		
1088	01/24		Post Office		Auto. Finance		
1089	01/24		Post Office		Auto. Finance		
1090	01/24		Post Office		Auto. Finance		
1091	01/24		Post Office		Auto. Finance		
1092	01/24		Post Office		Auto. Finance		
1093	01/24		Post Office		Auto. Finance		
1094	01/24		Post Office		Auto. Finance		
1095	01/24		Post Office		Auto. Finance		
1096	01/24		Post Office		Auto. Finance		
1097	01/24		Post Office		Auto. Finance		
1098	01/24		Post Office		Auto. Finance		
1099	01/24		Post Office		Auto. Finance		
1100	01/24		Post Office		Auto. Finance		

Packard Bell

Packard Bell

INTERNAL & EXTERNAL MODEMS

Packard Bell internal and external modems provide users with the impeccable quality, convenience, and features needed for reliable high speed data transmission.

Each is fully Hayes™ compatible.

Each is UL, CSA, and FCC approved...and will meet all appropriate standards for use with public telephone lines.



LASER PRINTER & IMAGE SCANNER

Perfectly suited for desktop publishing, the whisper quiet PB8300H+ Laser Printer emulates HP Laserjet+,™ Epson,™ and Diablo™...and delivers publication perfect pages at the rate of 8 per minute.

11 resident fonts, 1 megabyte memory and parallel ports are standard. The PB8300H+ supports IBM™ and Epson™ Bit Mapped Graphics and IBM™ Extended Graphics Character Set.

Additionally, the PB8300H+ can be upgraded to support 1.5 megabyte of memory.

Packard Bell's PBDA-300S Deluxe Image Scanner combines superior resolution, graphics versatility, and reliability with ease and convenience.

Built-in intelligence provides consistently sharp images whether scanning line art, half-tones, or both simultaneously. Convenient, user-adjustable controls enable the production of a

broad range of special effects and an unlimited variety of advanced graphic techniques.



The advanced PB8300H+ laser printer.



The versatile PBDA-300S deluxe image scanner.

EXPANSION BOARDS & DISKETTES

A remarkable array of add-in/add-on expansion boards permits users an opportunity to customize their system to precisely meet specific requirements. And, as you might expect, quality and reliability is consistent with every other Packard Bell component.

Packard Bell Mini and Micro Floppy Diskettes represent a new standard of excellence. Each diskette is tested and certified to be 100% error-free. Further, each diskette is capable of 10,000 continuous passes with no appreciable deterioration.

DESKTOP PUBLISHING SYSTEMS

As the demand for desk top publishing continues to grow, Packard Bell is responding with cost effective and versatile systems. Currently, Packard Bell offers 3 unique desk top publishing systems...each enabling users to meet their specific application requirements.

The Basic Publisher, the simplest system, is ideal for businesses with ongoing requirements for text intensive reports and documents.

The Advanced Publisher gives users a system that enables them to combine graphics with text via a Packard Bell image scanner.

The Professional Publisher is a near-publication-quality system designed to meet the most rigorous quality standards. Providing superior graphics capability and flexibility, it's an ideal "proofing" system for professional publishers, and it will meet even the most stringent internal business or corporate publication requirements. Consistent with Packard Bell's approach to maximizing user convenience, each is a complete system that can be fully operational with a minimum of training.



The remarkable PB Exec is ideal for desktop publishing.

America has listened to Packard Bell since 1929.
It still does. And if past is prologue, the Packard Bell commitment
to uncompromised standards of excellence will remain unchanged.



PACKARD BELL

A great American tradition continues.
1-800-521-7979

Packard Bell - U.S. • 21800 Oxnard Blvd. • Suite 700 • Woodland Hills • CA 91367 • (818) 716-2727
Packard Bell - Canada • 7181 Woodbine Ave. • Suite 230 • Markham • Ontario L3R1A3 • (416) 479-5700

Please note: Product names carrying trademark designation are properties of their respective manufacturers,
and are not connected in any way with Packard Bell. Packard Bell is a trademark of Packard Bell Electronics, Corp.
IBM, IBM PC, XT, AT, PS2 are registered trademarks of International Business Machines, Inc.
Packard Bell reserves the right to change product specifications without notice.

Dan - B
CUST. RELATIONS
773 4488
New Na
7734400

Dec - 1985
Larry Metz

2 Jan 1988

1/28/88

Floyd A. Paul
1545 Raymond Avenue
Glendale, CA. 91201

Dear Floyd:

Regarding your note in the recent California Antique Radio Gazette requesting information on Packard-Bell, I cannot give you a great deal of information directly, but there may be people living in your area who can. I worked at the Packard-Bell plant at Olympic and Bundy from 1959 to 1964 in the Space and Systems Division which eventually moved to Newbury Park, California. I left in 1970 after Teledyne bought Packard-Bell.

Several of the people that I worked with were long time employees, and when I left California in 1976 they were still working for Teledyne Electronics in Newbury Park. The names that I can remember are:

Arthur M. Leuck
7045 Beckford Avenue
Reseda, CA 91335

Early records "Sunset Blvd." 1947 -

818 344 1452

indy
A.J. Arman
5738 Winnetka Avenue
Woodland Hills, CA. 91364

Tarzana

In addition, When I left California, Robert and Herb Bell, who were president and chairman of Packard-Bell were still living, but I do not have their addresses.

I do know that the company made radios from the mid thirties until WWII and then manufactured various equipment for the Navy during the war, including the APX-6 IFF Transponder. They were one of the first companies on the West Coast to manufacture their own printed circuit boards, and they had several basic patents in the color television field. }

M...

I hope some of this information will assist you in obtaining the information you are looking for. Good luck and best regards.

Sincerely,

Robert J. Goad
8441 Flagstone Drive
Tampa, Florida 33615

2/16/88.

Dear Floyd

Made a couple corrections to your notes.

For your info, Packard-Bell moved the factory to 3443 Wilshire Blvd (at Mariposa) around 1945. The building had belonged to Cord, of the Cord automobile company.

In 1950 they moved to 12333 W. Olympic Blvd in Los Angeles.

Bob Bell (Herb's nephew) handled the building of the plant & the move from Wilshire Blvd & the cabinet factory in the City of Orange.

Herb Bell's brother Alton R. (Skip) Bell was very familiar with these early days. He was the middle of the fine boys. The last address I have on him is in Honolulu at the Colony Surf apartments.

Howard Thomas, Jr. was sort of like an adopted son to Herb. After

Howard's father's death, Herb moved the widow & Howard to S.A. & took Howard under his wing. Howard was office manager before W.W.II & general manager during the war. Howard left in 1948 after a dispute with Herb. He was a close personal friend of Jean Glis.

Richard (Dick) Klingler was the RCA vacuum tube sales manager on the west coast. He was very close to Herb during his early endeavors & later. I heard from a relative of his about five years ago. He was alive & well then. He lives in the Atwater District (near John Marshall High School.).

Good luck on your Project.

Sincerely,

How about Terraine Callup, Herb's secretary.
P.S. - You might also check into the Los Angeles "Radio Pioneers". Herb was a charter member.

274 5536
666 0509

Phone discussion
7:15 PM Feb 10, 88

Carl Duffy
4870 90th Pl. S.E.
Mercer Island
Wa 98040
206-232-0269

(4)
Carl Duffy hired into Packard-Bell in Sept. 1939.
The plant was at 1320 So. Grand in Los Angeles.
Carl recalls there may have been fifteen
employees when he started. He hired several
people including Bill Dey. Carl ~~became a~~^{WAS}
~~SHIPPING CLERK.~~

Carl remembers ~~the foreman~~, Homer Miller was the truck driver bringing chassis to P-B plant from Gilfillan
at the Gilfillan plant and trucked to the

So. Grand plant in 1939 and 1940. In November

of 1940 the Gilfillan factory was destroyed by
a fire. Herb Bell ~~had~~ negotiated a licensing
arrangement with RCA ~~and~~ following the

Gilfillan fire, Packard-Bell brought all
assembly work into their own plant.

They needed to expand their facilities
and moved to ~~470~~¹¹¹⁵⁻¹¹¹⁹ So. Hope where the
total P-B ~~sets~~^{CHASSIS} were made in ~~the plant~~^{+ FINAL ASSEMBLY TOOK PLACE.}

SEEING +

p. 2

Carl Duffy remembers hearing that Mr. Jackson (of the Jackson-Bell Co.) was the money ^{man} behind the Jackson-Bell partnership. Reportedly, Mr. Jackson's Trust Fund supplied the money that put J-B into business.

I want to work this story and Bill Dey's story into the P-B article. —

Please correct any part of this short story,

If you have another thought or two, please add and return to me

Thank you

P.S. Just mark up copy & return

Floyd

FLOYD A. PAUL
1545 Raymond Ave.
Glendale, CA 91201
(818) 242-8961

HE WAS VICE PRESIDENT & MANAGER OF SERVICE DIVISION.

(4) Carl Duffy, ~~he~~ left Packard-Bell in 1965. 1
Carl lives in Mercer Island, Wa.



SCARS

Southern California Antique Radio Society

FLOYD A. PAUL
1545 Raymond Ave.
Glendale, CA 91201
(818) 242-8961

Dear Ray:

Feb. 8

Please add to, subtract from, or change to reflect conditions as you knew them.

"Raymond Tyndale ^(b) joined Packard-Bell in Mar. of 1942 and worked for them six months before going into the service. His job was that of a tester. He worked in a small ^{semi sound proof} private room with test equipment. There were three other testers at the plant at 1115 So. Hope? ~~st~~

Completed chassis came to him from the assembly line and his job was to make them operate. Ray adjusted the if transformers, performed other trimming and alignment functions and checked the sets for performance.

If a set failed to operate he fixed it. If a circuit was misswired, ~~or~~ a tube was bad, or a part was bad, he ~~fixed~~ ^{fixed it} ~~repaired~~ it. Some of the larger sets he worked on such as the 120 and 130 ~~had~~ sometimes had several ~~errors~~ ^{problems}

~~and alignment, trouble shooting and fixing would take a little time.~~ ^{Ray remembers specifically a model B-19 (19 tubes)} Perhaps only two sets an hour would go through his hands. ^{The operating} After his work completion the sets ^{which was a top of the line set. He believed only a few hundred were made} would go to a cabinet installation work area. Ray ^{(like as did} Bill ~~Bill~~ Dey) remembers ^{during his last few weeks of employment that} after a day shift he was called to work an evening shift preparing ~~chassis~~ ^{assembled} partial chassis to be stored for future completion so as to meet the governments deadline for semi completed chassis, ~~be allowed as~~ "work in process".

(3) Raymond Tyndale is retired and living in Van Nuys, California

by mail by you? I have found a model number. Type 605-B insert by 1/27/49

1115 So. Hope St. W. 1115 So. Hope St.

Verd Cord Ray

~~Handwritten scribbles and signatures~~

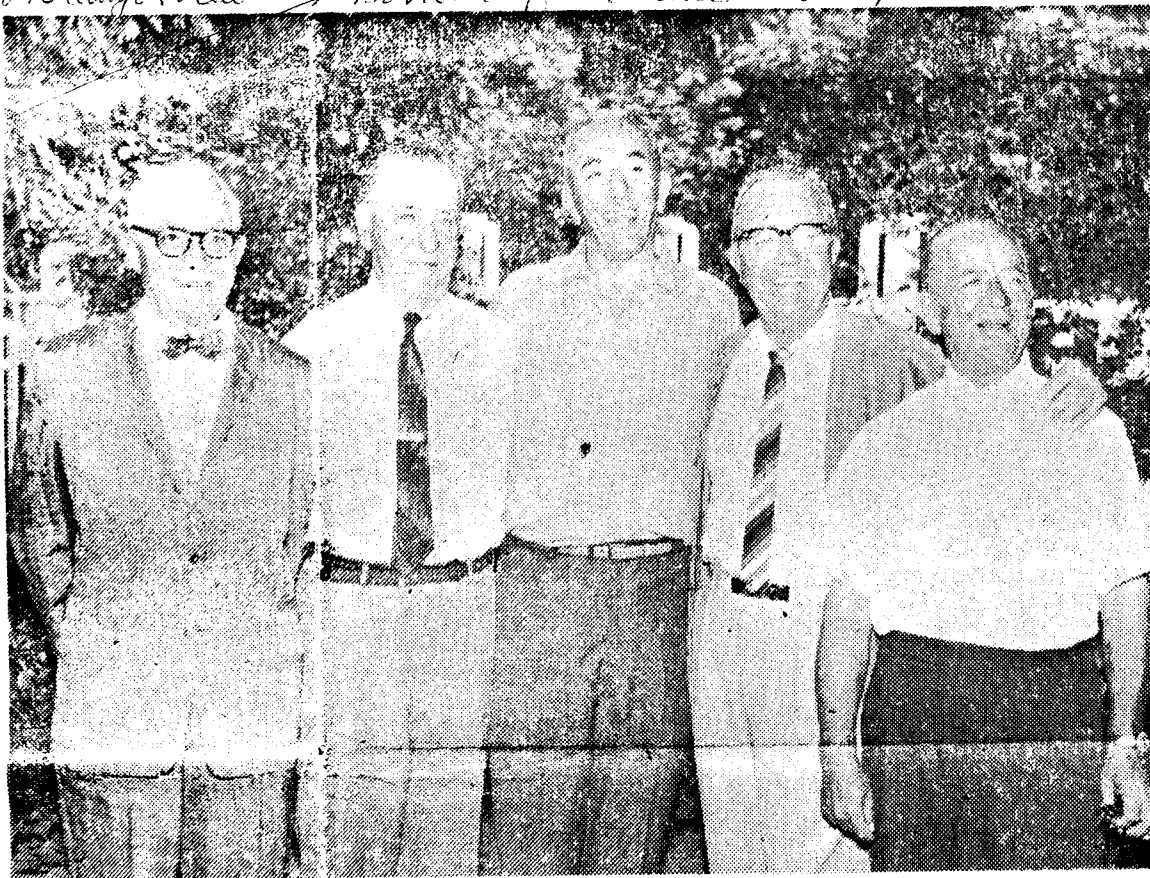
since Ray had

Former Residents Recount

Laguna Beach Burlington-Standard Press, Wis. Jul. 6 1941

Successes in Business World

876 Canyon View Borrowed from same cutting



Visit Home Pictured above are the five Zwiebel brothers who visited Burlington recently. The Zwiebel brothers, who were raised here, had not been back in a group in over 50 years. They have done extremely well in the world of business since leaving Burlington, as the accompanying story will attest. They are, left to right: Arthur B., Herbert A., Willard, Albert R., and Elmer A. Zwiebel.

"Burlington Has Everything," or so the saying goes, but just recently we had the privilege of meeting and talking with some local boys who left this city many years ago and made their fortunes in other parts of the country.

The five Bell (Zwiebel) brothers were back in town to revisit some of their many old friends, acquaintances and relatives. During the course of a week, they visited all the Zwiebel and Brehm families in the city and also renewed many old-time friendships

was soon forced in dissolution. Subsequently, a certain Californian named Packard became interested in the company and he became Herbert's partner.

Here we should insert one small bit of personal information. After moving from Milwaukee to California, the five brothers had changed their name from Zwiebel to Bell for business reasons. Thus, the company came to be known as Packard-Bell Electronics Corp.

In 1934, Herbert bought Packard out and again became sole

on to different branches of industry.

Arthur founded and still owns the Dimension Mill and Lumber Co. in Los Angeles. His company imports lumber for use and distribution all across the country and he also owns and operates several producing oil wells.

Albert (Slip) now lives with his wife in Honolulu, Hawaii. He is semi-retired but still works as a manufacturer's representative for a subsidiary of Packard-Bell known as the Bellwood Co. This firm produces over 750 million



July 8, 1921

Burlington was host to hundreds of people Monday, celebrating the nation's birthday. After the parade the crowd assembled at Steinhoff's grove for a patriotic program and picnic. Mayor W. H. Kruckman presided at the speaker's stand and introduced C. O. Bergener, who gave the address of the day.

One of the busiest places in southern Wisconsin over the week end was the factory of the Kellogg Ice Cream Co. The force started work packing before daylight Saturday morning and up to Monday night, 3,950 gallons were shipped or delivered by truck in Burlington and adjoining area.

Roy Moore of Moore's Resort stated that he turned down at least 200 requests for rooms and many slept in autos in his parking lot Saturday and Sunday nights. All hotels at the lake had more guests than they could accommodate over the Fourth.

A general feeling of approval of the matter of a location and cost of erecting a new high school building in Burlington was shown at the annual school meeting. Supt. L. F. Witter, G. C. Rasch, board member, and Clerk Nettie Karcher discussed the matter of school taxation, investigation of other new school buildings, and the annual cost to taxpayers of a new building. Last year high school enrollment was 257 and seats are provided for only 170 students.

After a delay of several months plans for the new bridge across the White river at the foot of Chestnut St., arrived from the state bridge engineer at Madison. The state gives the estimated cost to be \$17,000.

State Prohibition Agent Johnson, together with the sheriff and several deputies, made an early morning call in Burlington Saturday to inspect a delivery wagon of Finke-Uhen Brewing Co., and several saloons where beer had been delivered. The bottles when tested were found to comply with the law, a false rumor having been started by someone.

John T. Prasch is erecting a summer home on a lot on Brown's lake

bership in the Holstein-Friesian Association of America. Howard Peck and A. Baker are already members.

Burlington's four rural mail carriers cover a grand total of nearly 80,000 miles each year - more than three times the circumference of the world - in servicing farmers and rural mail patrons. The carriers are Earl B. Bartholf, William F. Enright, Seth Fratt, and Edward F. Jahns.

At the Griebel family annual reunion Sunday in Albrecht's woods, Leo Zwiebel was named president of the clan; Herbert Zwiebel, Elkhorn, vice-president; Mrs. Charles Stang, secretary; and Mrs. Ray Zwiebel, treasurer. Sixty-five members attended:

Fifty of the 184 young men of Racine county to register under the draft since their 21st birthday have Burlington addresses. Twenty-seven are from other localities west of highway 41; the remainder from Racine and environs.

Mrs. Ed Jahns and Miss Ferno Salisbury returned home the first of the week from a trip to the Smokey Mountains thru Tennessee and North Carolina.

Charles H. Zimmermann was last Friday sent from Camp Grant to Camp Monmouth, New Jersey, where he was assigned to the carrier pigeon department of the signal corps.

Misses Marjorie Fratt, Ellen Brehm and Eileen Schumann returned home from Madison where they attended Badger Girls' State.

Odds and Ends On the Great Civil War

over million

By Robert Linke

Let's look at some aspects of every facet of the Civil War except the fighting itself and the men who engaged in it. One story of courage comes to my mind and I should here like to retell it. This story, oddly enough, concerns

some 50 years that the brothers had all been here together and so it was a pretty festive week.

We just happened, by appointment, to be at the Louis Brehm residence on Perkins Blvd., Sunday afternoon when all the brothers arrived there and so we cornered them in the backyard near the barbecue pit and asked them how they had made out since leaving Burlington.

Probably the easiest way to tell about one of the most successful families to have ever lived in Burlington is to start at the beginning. This is the story as told by the brothers, Herbert and Albert, told it.

During the period between 1910 and 1915, the five Zwiebel brothers (Herbert, Arthur, Albert, Elmer and Willard) set out individually to "make their way in the world."

Herbert, the oldest of the five, went from Burlington to Milwaukee in 1912. He worked there for the Mitchell Automobile Co. until 1918, at which time, he, Arthur and Albert formed Zwiebel Brothers Co. They engaged in the manufacture of tire equipment and later, they incorporated with the "Bub" Body Co., which was owned by another brother, Elmer, or "Bub" as he was called.

The company grew and prospered until 1921, when the brothers were again infected with the travel bug. It seems that their parents had moved to California in 1919, and the boys now decided to follow them. So, in 1921, they made Zwiebel Brothers, Inc., a public corporation by selling it to their stockholders and to the public in general.

Then, with the profits in their hand and their parents' address in their pocket, the brothers set out for California where they separated and entered individual business ventures.

At this point in the story we were joined by two lovely ladies who turned out to be Albert and Arthur's wives and who had also made the trip with the five brothers.

As we sat chatting with them, Mr. Brehm reappeared and began to cook some meat over the fire. The interview seemed to be fast losing prominence to that charcoal-broiled aroma when, almost as suddenly as he had stopped, Herbert resumed the story.

In 1926, as he remembered, Herbert became interested in the electronics business. Using his father's private two-car garage as a workshop, he started to work in the comparatively new field of radio-electronics. From this humble start was to emerge the Packard-Bell Electronics Corp., a multi-million dollar business, but that is later in the story.

In 1930, Herbert made his brother, Albert, a partner in the business, but those were the depression years and so the partnership

called Packard's reason for selling as being his lack of faith in the future of the radio business. Herbert remained in charge of the company until the end of world war II.

Meanwhile, the other four brothers had also made their marks in the world of business. They had all founded and owned individual companies engaged in the manufacture of cabinets and component electronic parts. For eight years prior to world war II, these companies were suppliers of this equipment to Packard-Bell.

After the war, the four brothers dissolved their companies and their business affiliations with Herbert and so Packard-Bell began manufacturing its own cabinets and parts.

Later on in the forties, Herbert, after building Packard-Bell Electronics Corp. into a \$50 million a year business, sold it to the public and so it became a public corporation.

He retained his position as president, however, until 1956, when he became chairman of the board, a position from which he retired just this year. Although in retirement, Herbert is still a member of the board of directors and is senior advisor for the company.

The other four brothers, as we have said, dissolved their individual companies at the end of world war II. They then moved



... Dits from Dot ...

by DOROTHY HODGSKISS
County Home Agent



A quick drive thru Burlington on a Friday night proves to be a rather slow proposition what with all the shopping going on and this speaks very well for business there. It's a good way to see people, just go downtown and they're apt to be there. Course I wouldn't advise too much driving and hunting for people as there's just enough traffic that you need to observe rather closely where you're going and thus you can't scrutinize the crowds very well. Besides you'll get there faster by walking.

Speaking of shopping, grocery stores and super markets make for wonderful shopping with all this wonderful fresh produce to choose from. There's a lot of decisions to be made as you buy and these suggestions may be of help to you.

Make your own selection of perishable produce, you know what you want for the purpose intended. This trial and experience that we continually get does help us to learn more in selecting.

use in the electronics industry

Elmer (Bub) is also semi-retired. He sells building materials and trailer homes in the Newport area of Los Angeles, one of the most fashionable areas in that city.

The fifth brother, Willard (Sonny) is fondly referred to as the "Skipper" by his brothers. He operates and continues the boating activities for his brother, Herbert, by serving as ship captain aboard the "Five Bells," a 92-foot personal pleasure boat.

This boat, along with its three auxiliary crafts, is used solely for the boating activities of the family and is docked in the Newport area. It has traveled the Pacific to such ports as Panama and the Caribbean Sea area.

And that, as Herbert and Albert told it, is the story from 1912 until now.

As the interview was coming to a close, they outlined their plans for the remainder of the trip. After flying here from California, the five brothers now plan to drive west. They will make a special stop in Rock Valley, Iowa, the birthplace of four of the brothers, and a spot which Herbert has not visited since the family first moved to Burlington around the turn of the century.

Arthur and Albert's wives remained in Burlington for a few days and then flew back to California to meet their husbands.

The ever-increasing demand for lake property is evident at Brow Lake, and nine new summer homes have been erected this year. C. N. Hingham Bros. have built the new cottages on the south end of their property and all are ready for the summer.

July 4, 1941

The state "big tree" contest aroused interest in this community. Frank Koehnke of Springfield has a burr oak on his farm measuring 12 feet four inches in circumference with an 80 inch spread; and Mrs. Henry Rhoads reports a burr oak that measures 11 feet 10 inches in circumference and a cottonwood that measures 12 feet nine inches around.

A. W. Smith and Allan J. Pinnal have been admitted to membership.

bought at a reduced price, but purchase may not be as economical as you think if the waste in preparation offsets the price reduction.

Distinguish between defects that affect appearance and those that affect edible quality.

Finally, but very important, do not handle fruits and vegetables unnecessarily. Rough handling in the process of selection causes spoilage and waste and this cost is passed on to us as the entire group of consumers. So be careful.

The watermelons are certainly very popular now. There are too many varieties to choose from on the larger commercial markets are confined to those varieties which have been found most suitable for volume production, shipment and sale.

The essential quality in watermelons is maturity. It is extremely difficult for even an experienced buyer to determine the stage of ripeness of a watermelon when you can't see the interior color and texture. Because of us can properly keep or use a whole watermelon, and to allow us to judge our purchases most markets usually display watermelons in halves or quarters. This display allows us to judge color, flesh, which should be good color of seeds (usually dark brown or black in fully matured melons) and flesh texture, which should be firm and succulent.

Light colored flesh and yellow seeds indicate immaturity and subsequent lack of flavor and sweetness. Dry, mealy flesh or watery stringy flesh showing darkening and softening of tissues next to seeds, indicate overmaturity or excessive elapsed time after harvesting. In either case, desirable crispness and flavor will be lacking.

A hard white streak, longitudinal through the flesh indicates a condition known as "white heart" which makes the edible quality very undesirable. Consumer's demand finds decay a problem in melons freshly cut for display, the outer rind surface should be examined for injuries penetrating the rind.

Do not buy merely because the price is low unless the low price is because of overabundance at the time.

Consider commodities officially designated as plentiful foods. You'll find this information in the Thursday edition of most daily papers as well as on various radio and TV programs. I try to headline this on my Thursday program. There are weekly and monthly releases of plentiful foods. During July these foods will be plentiful, turkeys, peaches, summer vegetables, plums and shrimp.

Consider fruits and vegetables that are in season in our nearby production areas, particularly if there is good supply.

Do not buy more than you need and can adequately take care of in your refrigerator.

Remember, the largest is not always the best.

Avoid selections that show excessive deterioration. Frequently such off-quality stock can be

Jane Cutting

"E" DANCE

*576 Canyon View
Laguna Beach
Ca 92651*

Probably 1974

TOP RIGHT: H. A. Bell's Mother, sister and four sisters-in-law.



MIDDLE RIGHT: H. A. Bell, his Mother and his four Brothers.



LOWER RIGHT: Carl Leon and his sister, Donnie Ochoa, winners of the Jitter-Bug dancing contest. Frank Ware at the microphone, who did a great job as M.C.

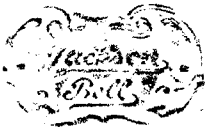
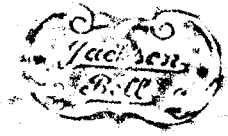
BELOW: Joe Davis and Margaret Schuster—Mr. and Mrs. Howard Thomas, co-winners of the Rhumba





SCARS

Southern California Antique Radio Society

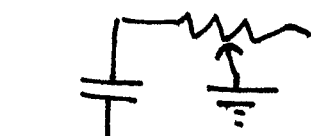


2/5/88

Dear Floyd,

In response to your letter;

1. On model 65 you are mistaking a ground symbol for an arrow. Thus:



a common form of tone control

← guide of 2A5

2. Both 35 & 65 used 2 dial lights as J-B does, indicating lineage.
3. An early model 35 (Rider 6-4) had no tone control, therefore would be ^{basically} quite similar to my J-B, indicating lineage.
4. According to my Antique Elec. Supply tube dating guide (which seems to be fairly accurate) the 2A5 was released by mid 1932 so would appear in late 1932 sets.
5. Resistors in my J-B do not match PB model 35

b. according to Stokes, 70 years, etc.

P. 59 - 2A5 "came out" early in 1933
but shows a picture on P. 63 showing 1931!

Conclusions:

1.) You need to find a magazine from 1932-3 pinpointing introduction of 2A5. I found, for example, documentation for a type 41 in an ^{early} 1932 Radio ~~and~~ Craft which is exactly what my tube chart says.

2.) I conclude tentatively based on your letter that my J-B was one of the last & came out late in 1932, ^{early} 1933.

3.) The logo is a 2 line variant of Jackson-Bell. thus \rightarrow Jackson
Bell

4.) The chassis may have been re-engineered by PB to avoid patent or licensing problems. As you know, the circuit involved here was a simple one and resistance values could easily be varied with little effect on performance. Ditto capac. values.

of all metal Products

1. In the 1940's and 1950's Al Lombardo was manager of manufacturing and was responsible for chassis, ^{and} tool and die work, and cabinets. He was a very capable and talented individual. Jean Pierre Gleis (2) hired into Packard-Bell in 1945 and was assigned to work for Al in the chassis dept. *Retired at 35 yrs old -*

2. Jean- after the Howard D Thomas Jr. 1881 ^{add} (whose father Howard D. Thomas Sr. was a distributor of Jackson-Bell radios and who was an original investment backer of Herb's when he formed the partnership of Packard-Bell)

3. regards Mr. Packard info. (he left the company when Herb Bell said they needed to increase production from 25 to 50 sets per day. Mr. Packard asked to be bought out. Further, it was reported Mr. Packard eventually became a used car salesman in Glendale.)

4. According to Jean Pierre Gleis the stationized dial idea originated with Hrb Bell's mother who said, one day, "I can't read those numbers on the dial face." Hence the birth of "Stationized dials" with station call letters printed across the dial. *(computer)*

5. After "Their excellent sales organization with their tight but fair policies was unbelievably effective", I'll add, "Their distribution network was another key part of the organization and helped make selling effective." *By individuals as their own distribution, Tried to be copied by*

6. Herb Fleck became chief engineer after Eddie Uecke left.

*Dr. Ralph Lamm
Forward
KCA -*

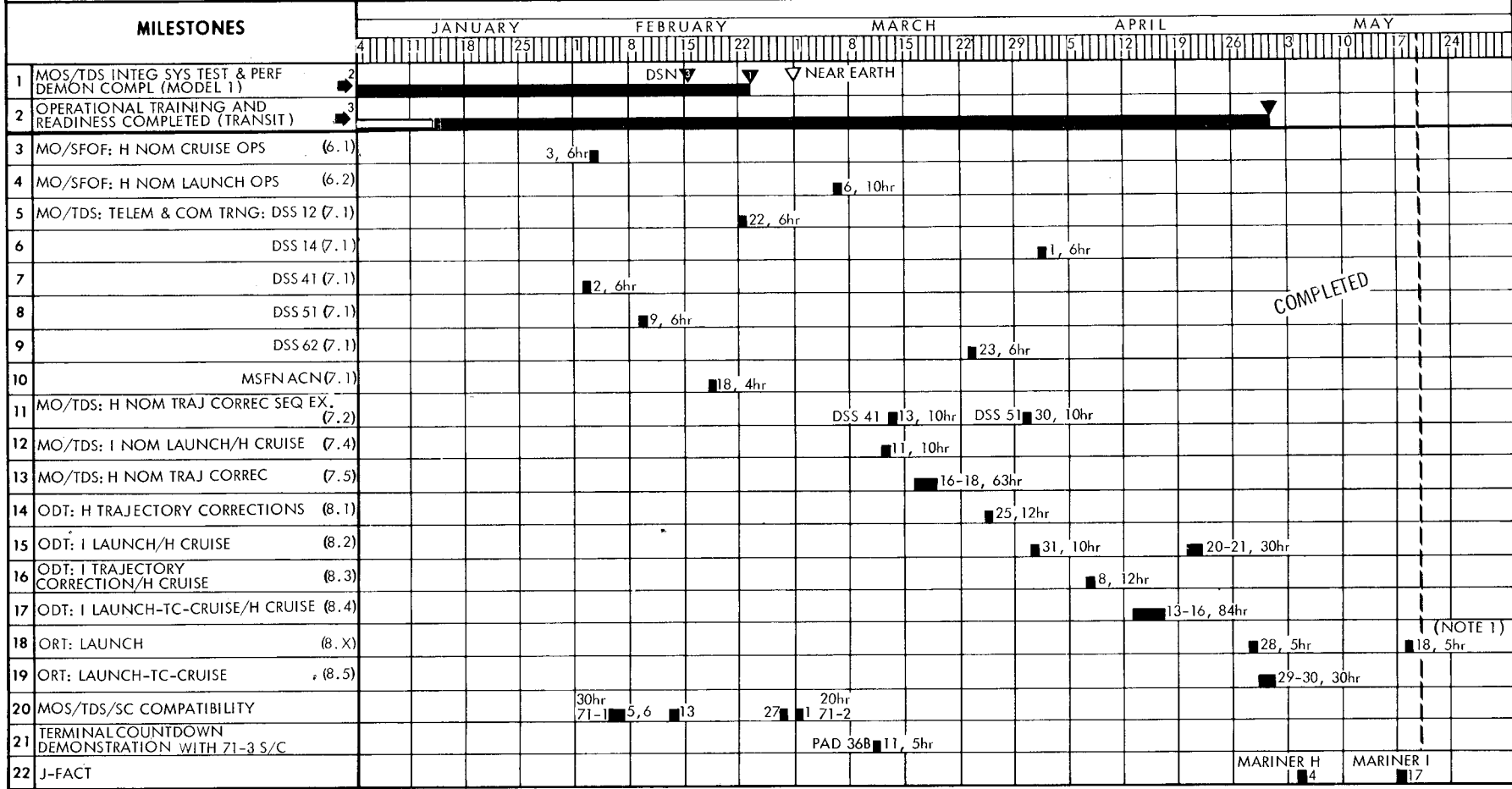
(2) Jean Pierre Gleis - He worked at Packard-Bell for 25 years. He retired as Vice President of Manufacturing for all of Packard-Bell in 1968. Jean still does consulting work, otherwise he is retired and living in Newport Beach, California

Rancho Mirage Desert - Kentucky - with their horses

Then became a distributor Hollywood Beverly Hills Santa Monica & the 3 Terraces

A - was the first manufacturer in the industry to have a 5 Tube set with a bakelite Face on the cabinet - 2 yrs later he had a full-bakelite Cab for the 5 Tube sets -

JET PROPULSION LABORATORY APPROVAL RESPONSIBILITY: <i>[Signature]</i> ACHIEVEMENT RESPONSIBILITY: <i>R. J. Hayes</i>	MARINER MARS 1971 MOS TRAINING SCHEDULE (TRANSIT TRAINING EXERCISES)	4 (Level)	ORIGINAL SCHEDULE APPROVAL: 21 OCTOBER 1970 STATUS AS OF: 19 MAY 1971
CONTRACTOR No. _____		SCHEDULE No. _____	



COMPLETED

(NOTE 1)

NOTES: 1- MILESTONE ADDED.

PST= PACIFIC STANDARD TIME
 PDT=PACIFIC DAYLIGHT TIME

(x.x) = MO TEST PLAN PARAGRAPH No.

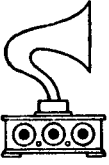
CONTROLLED MILESTONES
 [Symbol] NASA HEADQUARTERS
 [Symbol] SCHEDULE REVISIONS-NASA HEADQUARTERS
 2 = PROJECT
 3 = SYSTEM
 4 = SUBSYSTEM

OPTIONAL
 • E EXPECTED FROM FLOW PLAN
 • A ASSESSED

STATUS AS-1 OF LINE
 [Symbol] ON SCHEDULE
 [Symbol] BEHIND SCHEDULE
 [Symbol] AHEAD OF SCHEDULE

ACTIVITY
 [Symbol] MILESTONE

FIRST REVISION [Symbol] ETC.
 SECOND REVISION [Symbol]



SCARS

Southern California Antique Radio Society

Hi Jean:

Jan. 28

I sure enjoyed having lunch with you at Michael's yesterday. Your inputs will help to strengthen the story, give more meat to it and be more accurate in its entirety.

I've summarized some issues and am including them. Please mark up any statements that need correcting and drop them back to me. I'll work them into the story and get a full copy back to you in a couple of weeks. I've taken several of your inputs, like, Alsace-Lorraine, Arthur ~~was~~ knew the lumber business, Slip was first purchasing, then salesperson, etc. and made changes. distribution

Maybe its not important that Mr. Packard was eventually a salesman of cars, but I'll see as the story develops.

I hope to get some photos of P-B sets, as I said. I want to get back to R. Lamm on his Forward since I've changed a few words and want to put the bit about "distribution was a key part....." I feel if I've ask Ralph to write the Forward, I want him to feel comfortable with any changes. Ken Johnson owes me a couple of items. So it is still coming together.

Any other ideas that come to mind, jot them down, please. I hope to see Ted Flynn (two n's?) within the next two weeks.

Enough for now. Again, your inputs are very timely for my freeze date of Mar. 1.

Sincerely,

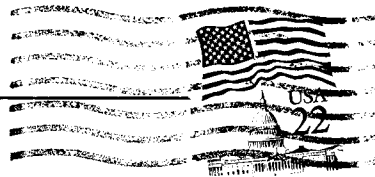
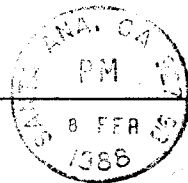
Flayed
I looked for my old file
on P.B. so far it must
be at my daughter I'll help it up
Many thanks

GERMAN-GRAVLEY CO., INC.

350-B Fischer Avenue
Costa Mesa, California 92626

J. P. Gleis

Jean Pierre Gleis
31 Linda Isle
Newport Beach, CA 92660



*Mr. Floyd A. Paul
1545 Raymond
Glendale, Calif. 91201*