

# POWELL

ALL ELECTRIC  
RADIO  
RECEIVER

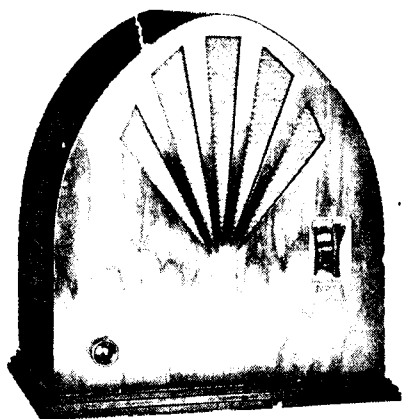
## Cathedral Model

A beautiful walnut finished, clock type radio set which is just the right size for small homes and apartments.

A perfectly designed receiver using all A. C. tubes and the Type 245 Power tube in the last audio stage.

The four tuned stages make for the utmost in selectivity, picking the desired DX station cleanly and clearly out of the jumble of locals. It is also the ideal set to take to your cabin or on your vacation, because of its power, distance getting ability and selectivity.

Dealers: A few choice districts are still open for franchise dealers. Write or phone today.



\$ **59**<sup>50</sup>  
Complete

### FEATURES:

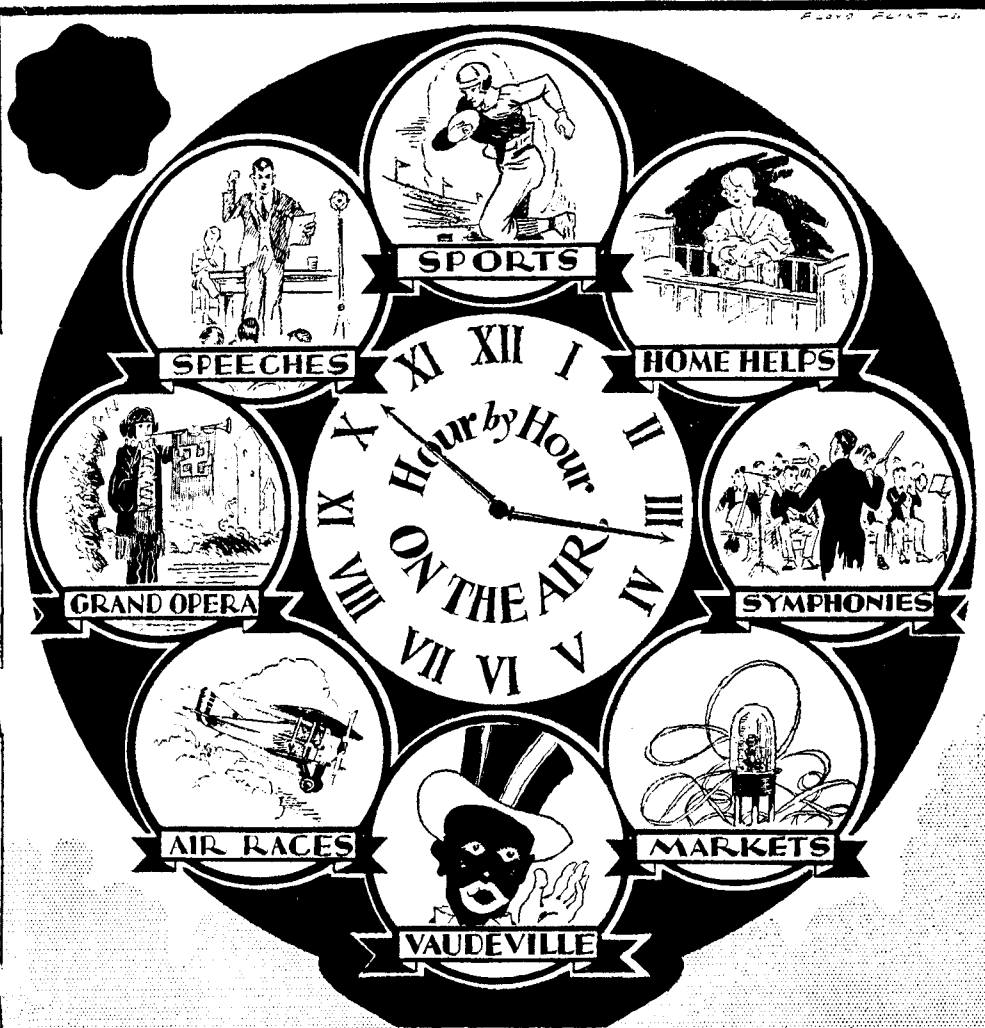
- 7 Tubes—All Electric
- 4 Tuned Stages
- Four Gang Condenser Drum Dial
- Sturdy Steel Chassis
- Heavy Duty Power Supply Unit
- Completely Shielded

## Powell Manufacturing Co.

HARRY B. COOPER, Factory Branch Manager

909 Pike Street      SEneca 1309      Seattle, Wash.

# northwest radio weekly



Hollywood, California—370.2 Meters

**KMTR**

500 WATTS  
 KMTR RADIO STATION  
 1025 N. Highland Avenue. Telephone HOLLY 3026  
 OLIVER S. GARRETSON, Technical Engineer  
 Portable Broadcast Station 6XBA  
 FREEMAN LANG, Field Engineer  
 "Echoes of Hollywood"

**DAILY EXCEPT SUNDAY—**

1:30 to 2:30 p. m.—Radio Press Hour.  
 2:30 to 3:30 p. m.—Palais De Dance.  
 4:00 to 4:15 p. m.—Vacation Days.  
 5:00 to 6:00 p. m.—Home Hour.  
 6:00 to 6:45 p. m.—Duro System Dinner Hour Concert.  
 6:45 to 7:00 p. m.—Vacation Days.  
 7:00 to 7:30 p. m.—Musical Program.

10:00 to 11:00 p. m.—Miller's Cafe Lafayette Orchestra.  
 11:00 to 12:00 midnight—Dance Music from Palais de Dance.

**TUESDAY, THURSDAY, SATURDAY—**

9:30 to 10:00 p. m.—Sylvia, the Blind Cook.

**WEEK COMMENCING SUNDAY, JANUARY 2, 1927****SUNDAY, JANUARY 2—**

8:30 to 7:00 p. m.—Leila Castberg's half hour. "Your Mind and How to Use It."  
 7:00 to 8:00 p. m.—Miller's Lafayette Cafe Concert Orchestra.  
 8:00 to 9:00 p. m.—Concert period, Jack Cronshaw's Orchestra.

**MONDAY, JANUARY 3—**

7:30 to 8:30 p. m.—Safeway Stores' program.  
 8:30 to 9:30 p. m.—Eureka Vacuum Cleaner Company program.

**TUESDAY, JANUARY 4—**

10:00 to 10:15 a. m.—Fifteen Minutes of Sunshine by Charles Hamp.  
 10:15 to 10:45 a. m.—Dr. T. J. Coulter, "Dogs and Cats."  
 11:00 to 12:00 a. m.—Mme. Alene's talk.  
 7:30 to 8:00 p. m.—Silver String Quartet.  
 8:00 to 9:00 p. m.—Leonore Duncan Ballad Ensemble.  
 9:00 to 10:00 p. m.—California Russian Quartet, Chico de Verde, director.

**WEDNESDAY, JANUARY 5—**

10:00 to 10:30 a. m.—Dr. Chas. Watson from University Christian Church.  
 8:00 to 9:00 p. m.—Hour of special entertainment.  
 9:00 to 10:00 p. m.—Los Angeles Railway Orchestra.

**THURSDAY, JANUARY 6—**

10:00 to 10:15 a. m.—Fifteen Minutes of Sunshine by Charles Hamp.  
 10:15 to 10:45 a. m.—Dr. Paul J. Dorosh, The Diet Question Box.  
 10:45 to 11:00 a. m.—Georgia O. George.  
 7:30 to 8:00 p. m.—Chas. Silliman's Rex Trio.  
 8:30 to 9:00 p. m.—Angelus Instrumental Quartet.  
 9:00 to 10:00 p. m.—Sierra Singers. Male quartet.

**FRIDAY, JANUARY 7—**

8:15 to 9:15 a. m.—The Breakfast Club.  
 7:30 to 8:00 p. m.—Thirty Minutes of Sunshine by Charles Hamp.  
 8:00 to 9:00 p. m.—KMTR Concert Orchestra. Loren Powell, director.  
 9:00 to 10:00 p. m.—Ray Bailey's String Quartet.

**SATURDAY, JANUARY 8—**

10:00 to 10:15 a. m.—Charles Hamp, director of radio activities for the Iona Company.  
 10:15 to 11:30 a. m.—Auditorium period, conducted by Selwyn Harris,  
 1:00 to 1:15 p. m.—Gordon Whitnall, managing director, City Planning Commission.  
 1:15 to 1:30 p. m.—Officer Earl H. Cooper, Bureau of Public Safety.  
 7:30 to 8:10 p. m.—Los Angeles Police and Fire departments.  
 8:20 to 8:30 p. m.—Sheriff's Office. Bureau of Public Relations.  
 8:30 to 9:00 p. m.—Y. M. C. A. program.  
 9:00 to 10:00 p. m.—Special musical program.

**SHEPHERD RADIO SERVICE**

Authorized Dealer for

**Stromberg-Carlson, Federal Ortho-Sonic Receiving Sets**

We specialize in correcting balky receivers. Super-Heterodynes, Infradynes,  
 Roberts, etc., made to perform efficiently  
 Transformers Matched, Coils Balanced

Phone Us Your Troubles. Our Service Will Please  
 Batteries Changed, Tubes Reactivated. Work Called for and Delivered

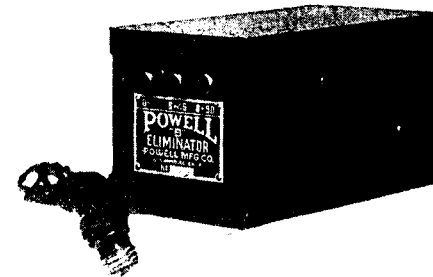
**GRanite 7482**

7562 Sunset Boulevard

Hollywood, California

# Startling Announcement

## The Powell 'B' Eliminator



Uncondition-  
ally  
Guaranteed

**\$1225**

Operates any set from light socket without the use of expensive and troublesome "B" batteries. A large surplus of power at 100 volts and at a cost of only a few cents a year.

**MORE VOLUME - - MORE DISTANCE**  
**GREATER SATISFACTION**  
**BETTER QUALITY - - BETTER PRICE**

No Tubes, No Acid and Nothing Else to Buy

*A ten-day trial with absolute satisfaction or money back*

**GUARANTEE**

This instrument is the result of months of experimenting and exhaustive tests. The best of materials and workmanship have been combined to insure its satisfaction with the user and it is guaranteed unconditionally for one year. If for any reason it fails to perform satisfactorily it should be returned to the seller who is instructed to repair or replace, free of charge.

Call or Telephone VERmont 1619 for Demonstration

**Powell Manufacturing Co.**

4009 S. Western Ave.

Los Angeles, Calif.

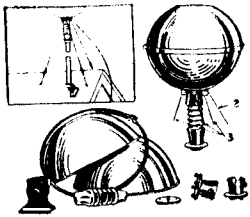
Index to Advertisers

A. & A. Furniture Co.	111
Advance Electric Co.	84, 85, 109
Aerophonic Mfg. Co.	112, 113
Armo Radio Laboratory	117
Ampliphonic Laboratory	181
American Electric Co.	73
Aerovox Wireless Corp.	165
Areturus Radio Co.	193
Balkite Radio Co.	30, 31
Interstate Elec. Co.	132
Birch-Smith Furn. Co.	149
Bosch Radio Service	190
Brown, N. E.	191
Baker-Fitzgerald	157
Brown Radio Co.	70
Burgess Battery Co.	173
Birkel Music Co.	145
CeCo Mfg. Co.	29
Child's Lab.	75
Cooper, A. W.	70
Citizen's First Shop	179
Cheney, Jack	183
Campbell, Ray	97
Carter Radio Co.	59
Crosley Dealers	4-5
Detsch & Co.	190
Dayen Radio Corp.	127
DeJarnett Radio Co.	174
Tobé Deutschnan Co.	105
Eunsee Radio Co.	82, 83
Everest, H. A.	119, 137
Elect. Light & Supp. Co.	116
Echophone Radio Mfg. Co.	155
Electric Corporation	57
Elton, Inc.	44
Fitzgerald Music Co.	84
French Battery Co.	136
Giltlan Radio Co.	143
Gostlee Radio Products Co.	75, 154
Green Specialty Co.	120
Grebe, A. H., Co.	177
Heizer-Setzer Co.	118, 128, 129
Horn, Herbert H., Co.	194, 195
International Resistance Co.	118
Jackson-Bell Co.	159
Johnson Cabinet Works	199
Jensen Radio Mfg. Co.	26, 27
Kierulff & Ravenscroft	2, 3, 6, 7
Kennedy, Colin B.	67
Kolster Detours	50
L. A. Radio Co.	117
Lansing Mfg. Co.	189
Lawton, C. C., Co.	10, 11, 14, 15, 18, 19
Lister Walter & Gough, Inc.	34, 122, 123
Lasure, Harry	158
Lee, Don	141
Los Angeles Examiner	153
Mello Tone Radio Co.	186
MacMillan Pet. Co.	147
Mission Bell Radio Co.	87
Meyberg, L. J., Co.	184, 185
Magnavox Co., The	171
Martlo Music Co.	114
Martlo Music Co.	36, 40, 41
Majestic Radio & Supply Co.	76, 77
National Electrical School	134
National Co., The	132
Overell's	16
Pickwick Broadcasting Corp.	56
Pacific Wholesale Radio Co.	68, 69
Patterson Radio Co.	151
Philadelphia Storage Battery Co.	175
Powell Mfg. Co.	101
Parent Electric Co.	41, 45
Precision Electric Mfg. Co.	167
Prinos Radio Corp.	160
Polmet Mfg. Co.	12
Radio Owl, The	51, 187
Radio Distributing Co.	189
Radio Cabinet Distributing Co.	137
Radio Constructors	139
Radio Mfg. Supply Co.	102, 103
Radio Supply Co.	53, 54, 55
Rapp, John G., Corp.	48, 49
Relman Wholesale Electric Co.	59
Raytheon Mfg. Co.	136
Radio Map Co.	137
Roffy, J. T.	186
Radio Corp. of America	8
Schwabacher-Frey Co.	9
Schlitzdorf Bethlehem Co.	108, 193
Shamrock Mfg. Co.	80 to 96
	25

(Continued on Page 118)

DEALERS

SPECIAL



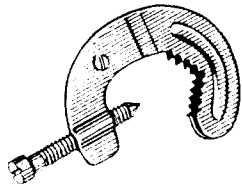
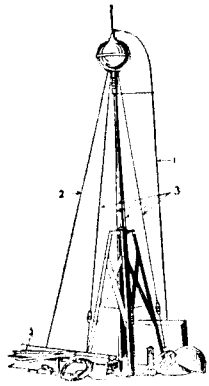
**MORRIS BALL**  
**Aerial Installations**  
 Give Quick, Sure Results,  
 and Are More Selective  
 Morris Ball Kits

Complete  
**\$5.50**

A Special  
 "FREE TO  
 DEALERS"

Proposition  
 on the  
 Complete  
 Tower  
 is being  
 offered.

Ask for  
 Jobber  
 or write us  
 direct.



A  
 Perfect  
 Ground  
 Clamp  
 15c

Used by dealers on all installations

Represented by

**DETSCH & COMPANY**

800 N. Spring St.  
 Los Angeles

341 10th St.  
 San Francisco

# Announcing-- A NEW ALL ELECTRIC RADIO

(Four Tubes)

WE are building a set that will fill a long-felt want in the *low price field*. Its construction is of the best, having in mind

*"Maximum Satisfaction to the User with Minimum Servicing for the Dealer"*

**Here Are a Few Outstanding Features:**

Standard Parts Used Throughout

Heavy Metal Chassis

Special Rectifier Tube

Heavy Duty Filter Condensers

Built-in Air Column Speaker

Volume Control

Heavy Duty Power Jack

All Parts Readily Accessible

Sold to Dealers Only—Delivery Ready Sept. 12

## POWELL MANUFACTURING CO.

LOS ANGELES

4009 South Western Ave.

VERMONT 1619

The essential features of these programs are identical with those sent by the stations.



LARRY SNELL

# KGFJ Los Angeles, Calif.—1420 Kc.

Owner and Manager  
Ben S. McGlashan  
Duke Hancock  
Assistant Manager  
Thelma Kirchner  
Program Director  
Larry Snell  
Announcer  
Chas. Whitney  
Chief Technician  
H. Trask Bruck  
Night Owl  
Phones:  
Westmore 7777  
Westmore 7778

211.1 METERS—Washington Blvd. at Oak St.  
"Keeping Good Folks Joyful Twenty-four Hours a Day"

7:00 p. m.—Eddie Goldmacher, jazz pianist; Radlotising Twins.  
10:30 p. m.—Mary Mitchell, soprano; Gene Perry, uke; Earl Snyder, tenor.

### TUESDAY, NOVEMBER 27

10:00 a. m.—Renee Fuller, violinist; Gene Perry, uke; Margaret Hart, pianist.  
11:00 a. m.—Rocky Bernard, baritone; Margaret Hart.  
12:00 noon.—Rae Silverman, blues singer; Esther Kahn, pianist.  
7:00 p. m.—Charlie Davis, uke; Radlotising Twins.  
10:30 p. m.—Nat Welncoff, tenor; Gene Perry, uke; Gertrude Goldberg, soprano.

### WEDNESDAY, NOVEMBER 28

10:00 a. m.—Ralph Wark, tenor; Renee Fuller, violinist; Margaret Hart, pianist.  
11:00 a. m.—Ray Torres, tenor; Mary Mitchell, soprano; Margaret Hart, pianist.  
12:00 noon.—Rae Silverman, blues singer; Esther Kahn, pianist.  
7:00 p. m.—Albert Keglovich, violinist; Irma Vail, pianist.  
10:30 p. m.—Laurita Nance and Mildred Brotzman, blues; Gene Perry, uke.

### THURSDAY, NOVEMBER 29

10:00 a. m.—Ralph Wark, tenor; Renee Fuller, violinist; Margaret Hart, pianist.  
11:00 a. m.—Charlie Cole, tenor; Mary Mitchell, soprano; Margaret Hart, pianist.  
12:00 noon.—Rae Silverman, blues singer; Esther Kahn.  
7:00 p. m.—Radlotising Twins.  
10:30 p. m.—Dorothy Green, blues; Gene Perry, uke.

### FRIDAY, NOVEMBER 30

10:00 a. m.—Ralph Wark, tenor; Gene Perry, uke; Margaret Hart, pianist.  
11:00 p. m.—Rocky Bernard, baritone; Margaret Hart.  
12:00 noon.—Rae Silverman, blues singer; Esther Kahn.  
7:00 p. m.—Albert Keglovich, violinist; Irma Vail.  
10:30 p. m.—Dorothy Green, blues; Gene Perry, uke.

### SATURDAY, DECEMBER 1

10:30 a. m.—Renee Fuller, violinist; Gene Perry, uke; Margaret Hart, pianist.  
11:00 a. m.—Ray Torres, tenor; Mary Mitchell, soprano; Margaret Hart, pianist.  
12:00 noon.—Rae Silverman, blues singer; Esther Kahn.  
7:00 p. m.—Charlie Davis, uke; Radlotising Twins.  
10:30 p. m.—Laurita Nance and Mildred Brotzman, blues; Gene Perry, uke; Dorothy Green, blues.

#### DAILY EXCEPT SUNDAY

12:30 a. m.—Nite Owl program.  
7:00 a. m.—Breakfast program.  
7:45 a. m.—Dave Ward, the Office Boy.  
8:30 a. m.—Gordon Smith's Radlotising Service; Dr. Cooke's Health Talk.  
9:30 a. m.—Adele Millar Beauty Talk.  
10:00 a. m.—Airline Radio Service.  
12:00 noon.—Your Favorite Request Hour.  
1:00 p. m.—Studio program.  
2:00 p. m.—Dick Moder's Orchestra.  
7:00 p. m.—Gordon Smith's Radlotising Service.  
8:00 p. m.—Rae Silverman and Esther Kahn, blues.  
8:30 p. m.—Maurice Mense and his El Patio Orchestra by remote control from El Patio Ballroom.

#### SUNDAY, NOVEMBER 25

12:00 a. m.—Nite Owl program.  
7:00 a. m.—John Wright program; KMTR rebroadcast.  
10:00 a. m.—Southlanders Orchestra; Charlie Cole, tenor.  
12:00 noon.—Hotel Alexandria Concert Trio;  
1:30 p. m.—Honolulu Three Hawaiian Trio; Gladys Parish, blues singer.  
3:30 p. m.—Sunday Afternoon Frolic;  
6:00 p. m.—Studio program.  
9:00 p. m.—Recordings.

#### MONDAY, NOVEMBER 26

10:00 a. m.—Ralph Wark, tenor; Renee Fuller, violinist.  
11:00 a. m.—Rocky Bernard.  
12:00 noon.—Rae Silverman, blues singer;  
3:00 p. m.—Bureau of Public Safety; L. A. Police Quartet.

The Most Popular Blue Singer on the Air **RAE SILVERMAN** Your Favorite Request Hour  
12 to 1, Week Days **Esther Kahn at the Piano** **K G F J**



E. L. LANDSBERG

# KFWC Pomona, Calif.—1200 Kc.

Owned and Operated by  
James R. Fouch  
E. L. Landsberg  
Res. Manager  
Roy Adams  
Announcer  
Ruth Baldwin  
Studio and Prog. Mgr.

Phone 1147 249.9 METERS—100 WATTS  
Eisherry Reynolds Studebaker Bldg.

### MONDAY, NOVEMBER 19

7:00 p. m.—Studio program; recordings.  
7:45 p. m.—Ontario Shade & Linoleum Co.; Ruth Baldwin.  
8:00 p. m.—L & W Service Corp.; recordings.  
8:15 p. m.—Braundale Acres; request program.

### TUESDAY, NOVEMBER 20

7:00 p. m.—Monarch Metal Weatherstrip; requests.  
7:45 p. m.—Ontario Shade & Linoleum Co.; recordings.  
8:00 p. m.—L & W Service Corp.; Sweetheart of the Air.

### WEDNESDAY, NOVEMBER 21

7:00 p. m.—Studio program; recordings.  
7:45 p. m.—Ontario Shade & Linoleum Co.; One-man Band.  
8:00 p. m.—L & W Service Corp.; recordings.  
8:15 p. m.—Braundale Acres; popular request night.

### THURSDAY, NOVEMBER 22

7:00 p. m.—Monarch Metal Weatherstrip; orchestra.  
7:45 p. m.—Ontario Shade & Linoleum Co.; recordings.  
8:00 p. m.—L & W Service Corp.; Ruth Baldwin.  
8:15 p. m.—Braundale Acres; Sweetheart of the Air.

### FRIDAY, NOVEMBER 23

7:00 p. m.—Studio program; recordings.  
7:45 p. m.—Ontario Shade & Linoleum Co.; requests.  
8:00 p. m.—L & W Service Corp.; Sweetheart of Air.

1925  
November 24

## TRULY A MODERN A. C. RADIO

# The POWELL MODEL 10

See this set at your dealers

Price

# \$42.50

Complete

Manufactured and Guaranteed by the

# POWELL Manufacturing Co.

LOS ANGELES

**KFSD**

**San Diego, Calif.—600 Kc.**

1000 WATTS—499.7 METERS  
"The Air Capitol of the West"  
Telephone Franklin 8353

Harvey T. Collins  
President  
Tom Sexton  
General Manager  
Jack D. Clement  
Chief Technician

**DOROTHY ZIMBLEMAN**  
Program Director

**DAILY EXCEPT SUNDAY**  
9:00 a. m.—Morning Musical, H. T. Peterson  
10:00 a. m.—Amy-Lou Shopping Hour.  
11:15 a. m.—Service Hour.  
12:00 noon—Time Signal.  
12:30 p. m.—Lloyd Peck's Service Hour.  
12:30 p. m.—Pantages Organ Recital, Roma Lindsay.  
4:45 p. m.—Nightly Musical Review, Fred Heitfeld.  
6:00 p. m.—Time Signal.  
6:30 p. m.—San Diego Union and Tribune news items.  
7:00 p. m.—U. S. Government weather report.  
9:30 p. m.—Time Signal.

**SUNDAY, APRIL 28**  
10:00 a. m.—Browning-Baker Music Box Review  
12:00 noon—Old time program.  
3:15 p. m.—Dr. H. J. Stewart, Spreckels Organ.  
6:15 p. m.—Hutton's Hotel Del Coronado Concert Quartet.

**MONDAY, APRIL 29**  
9:00 p. m.—San Diego Building & Loan Concert.  
7:30 p. m.—Theatre Music Co. Hour.  
8:00 p. m.—C. A. Gray's Salinas Mexican Soreaders  
9:00 p. m.—Ratliff Academy of Dancers.  
10:00 p. m.—American Legion Roundup.  
11:00 p. m.—Plata Real Orchestra.

**TUESDAY, APRIL 30**  
3:15 p. m.—Spreckels Outdoor Organ, Balboa Park.  
6:00 p. m.—Plata Real Orchestra.

7:00 p. m.—Greenwood Memorial Trio, Freida D'Andrea, contralto.  
8:00 p. m.—George Ballentine, tenor.  
8:30 p. m.—Janet Stanley, Dorothy Zimbleman  
10:00 p. m.—Jimmie Kerr's Orchestra.  
11:00 p. m.—Bob Larson's Orchestra.

**WEDNESDAY, MAY 1**  
3:15 p. m.—Balboa Park Organ.  
6:00 p. m.—Plata Real Orchestra.  
7:00 p. m.—Don Lee's LaSalle Trio, Mollie Burwell  
8:00 p. m.—Feature program.  
9:00 p. m.—Ratliff Academy of Dancing.  
10:00 p. m.—Hotel Del Coronado Casino Orchestra  
11:00 p. m.—Bob Larson's Orchestra.

**THURSDAY, MAY 2**  
3:15 p. m.—Spreckels Outdoor Organ.  
6:00 p. m.—Dinner program.  
7:00 p. m.—Cramer's Hiking Hour Trio; Agnes Shaw  
8:00 p. m.—Unitarian Church program.  
9:00 p. m.—San Diego Police program, traffic regulations, Sergt. Mike Neely.  
10:00 p. m.—Jimmie Kerr's Casino Orchestra  
11:00 p. m.—Plata Real Orchestra.

**FRIDAY, MAY 3**  
3:15 p. m.—Balboa Park Organ.  
6:00 p. m.—Qualitee Dairy Products Hour  
7:00 p. m.—Theatre's Music Hour.  
8:00 p. m.—Motor Hdw. Old Time Hour, Rosworth & Carr, Glen Genone.  
9:00 p. m.—Feature program.  
10:00 p. m.—Kerr's Casino Orchestra.

**SATURDAY, MAY 4**  
3:15 p. m.—Spreckels Outdoor Organ.  
6:00 p. m.—Dinner program.  
7:00 p. m.—John P. Mills comic opera bits, George Kornhorst.  
8:00 p. m.—S. D. Violin School, John Cockran.  
8:30 p. m.—Blanche Woods, original girl baritone  
9:00 p. m.—Red Wright's String Quartet.  
10:00 p. m.—Jimmie Kerr's Orchestra.  
11:00 p. m.—Bob Larson's Orchestra.



**KGER**

**Long Beach, Cal.—1370 Kc.**

100 WATTS—218.8 METERS  
435 Pine Avenue Phone 632-73  
Owned and Operated by C. Merwyn Dobyns

Jay Tapp  
Chief Engineer  
Harvey Brewster  
Announcer and Staff Artist  
Eddie Merrill  
Announcer and Staff Artist  
Bertha Brewster  
Program Manager  
Ruth Sultzer  
Staff Artist  
Harold Bender  
Technician

**C. MERWYN DOBYNS**  
**DAILY EXCEPT SUNDAY**  
7:00 a. m.—Up with the Sun.  
9:00 a. m.—Columbine Creamery program.  
9:30 a. m.—Rev. Johnston Calhoun (ex. Sat.).  
10:00 a. m.—Studio program.  
11:00 a. m.—Rhythm Makers, Pacific Coast Club.  
2:30 p. m.—Long Beach Municipal Band (ex. Mon.).  
3:00 p. m.—Daily Musical Calendar.  
4:30 p. m.—Children's program (ex. Sat.).  
5:00 p. m.—Dobyns Patent Leather Kids.  
6:00 p. m.—Late news bulletin (ex. Mon.).  
7:30 p. m.—Long Beach Municipal Band (ex. Mon.).  
10:30 p. m.—Dick Seay's Majestic Ballroom Orchestra.

**SUNDAY, APRIL 28**  
9:30 a. m.—Taubman Men's Bible Class.  
11:00 a. m.—First United Presbyterian Church.  
1:00 p. m.—Studio program.  
2:30 p. m.—Long Beach Municipal Band.  
4:00 p. m.—Vocal program.  
5:00 p. m.—Frank Waller Allen.  
5:30 p. m.—Vesper Hour.  
6:00 p. m.—Studio program.  
9:30 p. m.—Sunday Night Frolic.  
11:30 p. m.—Organ from P. C. C.; Herbert Nixon.

**MONDAY, APRIL 29**  
1:00 p. m.—Exchange Club program.  
4:00 p. m.—Dobyns Patent Leather Kids.  
5:40 p. m.—Health program.  
7:00 p. m.—Better English.

8:00 p. m.—Late news bulletin.  
9:00 p. m.—Studio program.  
11:30 p. m.—Organ, Herbert Nixon.

**TUESDAY, APRIL 30**  
1:00 p. m.—Hawaiian music.  
2:00 p. m.—Gilmore Saxophone Conservatory.  
4:00 p. m.—Music Appreciation.  
7:00 p. m.—Book Lovers and studio.  
9:00 p. m.—Studio program.  
11:30 p. m.—Organ, Herbert Nixon.

**WEDNESDAY, MAY 1**  
1:00 p. m.—Studio program.  
4:00 p. m.—Home Economics.  
5:40 p. m.—Health program.  
6:45 p. m.—Juvenile Problems.  
7:00 p. m.—Capitol Theater organ, Dick Dixon.  
9:00 p. m.—Masque and Sandal Players.  
9:30 p. m.—"Smiling" Eddie Marble.

**THURSDAY, MAY 2**  
1:00 p. m.—Optimist Club program.  
1:30 p. m.—Voice Clinic.  
4:00 p. m.—Educational Russia.  
7:00 p. m.—Cline Clittick.  
9:00 p. m.—Program from P. C. C.  
9:30 p. m.—Studio program.  
11:30 p. m.—Herbert Nixon, from P. C. C.

**FRIDAY, MAY 3**  
1:00 p. m.—Studio program.  
4:00 p. m.—Eloise Casner, soprano.  
5:40 p. m.—Health program.  
7:00 p. m.—Re-educating the Grown-ups.  
8:15 p. m.—Studio program.  
9:00 p. m.—Taubman Men's Bible Class program.  
9:30 p. m.—Studio program.

**SATURDAY, MAY 4**  
1:00 p. m.—Studio program.  
4:00 p. m.—Edna Bond, blues singer.  
5:00 p. m.—Dobyns Patent Leather Kids.  
6:30 p. m.—Hawaiian music.  
7:00 p. m.—Church announcements.  
9:00 p. m.—Studio program.  
11:00 p. m.—Frolic.

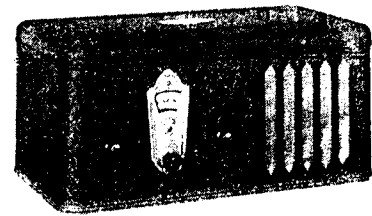
**Powell for Performance and Price**

**Powell AC Radio**

THE MODERN ALL ELECTRIC RECEIVER

Assuring You Highest Quality in

TONE—SELECTIVITY—BEAUTY  
PERFORMANCE—PRICE



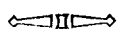
Model "15"

\$ **49<sup>50</sup>**

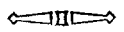
Complete

A Few of Its Outstanding Features:

- STEEL CHASSIS—FIVE TUBES
- ILLUMINATED SINGLE DIAL CONTROL
- BUILT-IN MAGNETIC CONE SPEAKER
- BEAUTIFULLY FINISHED
- AC OPERATION



Attractive Dealer Proposition



Manufactured by

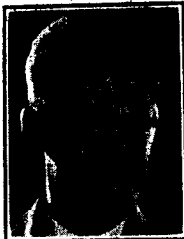
**POWELL MANUFACTURING CO.**

LOS ANGELES  
6121 S. Western  
York 9552

SEATTLE  
Wash.

SAN FRANCISCO  
1270 Mission St.  
Underhill 3314

**Powell for Performance and Price**

**KFWB****Hollywood, Calif.—950 Kc.**1000 WATTS—315.5 METERS  
WARNER BROS. MOTION PICTURE STUDIOS  
Warner Brothers' Theater, 6425 Hollywood BoulevardPhone GL. 9461  
Gerald L. King  
ManagerWm. Ray  
Assistant ManagerFlorence Israel  
Program ArrangerLealie Hewitt  
Chief Technician

JERRY KING

**DAILY EXCEPT SUNDAY**

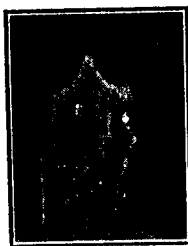
- 8:00 a. m.—Harry Q. Mills, organist; entertainers.  
9:00 a. m.—Ray Bailey's Trio and entertainers.  
10:00 a. m.—Harmony hour.  
11:15 a. m.—Woman's Hour.  
12:30 p. m.—Housekeepers Chat (ex. Mon., Wed., Sat.).  
12:45 p. m.—Air Journal (ex. Wed. and Sat.).  
2:15 p. m.—Baseball Game from Wrigley Field.  
4:30 p. m.—Radio Travel Tales (except Mon.).  
5:00 p. m.—Radio Review.  
6:30 p. m.—Musical program.  
6:30 p. m.—Harry Jackson and entertainers.  
7:45 p. m.—Daily news items.  
9:00 p. m.—Time Signal, New Haven Clock Co.

**SUNDAY, MAY 26**

- 9:00 a. m.—Dan Parker program.  
12:30 p. m.—Dan Parker program.  
1:30 p. m.—Pacific Coast League Baseball Game from Wrigley Field, Sacramento vs. Hollywood.  
6:30 p. m.—Harry Jackson and his entertainers.  
7:00 p. m.—Hollywood Athletic Club.  
7:30 p. m.—Burr McIntosh, The Cheerful Philosopher.  
9:00 p. m.—Program for Dept. of Water and Power.  
City of Los Angeles, presenting Badger and Mueseler, song and patter team; Vincenzo Pometti's Concert Orchestra.  
10:00 p. m.—Amos 'n' Andy.  
10:10 p. m.—Bill's Ragtime Review.

**MONDAY, MAY 27**

- 2:10 p. m.—Ann Grey in popular songs; Don Warner.  
2:40 p. m.—Pacific Electric Art in old time songs.  
4:00 p. m.—Radio Travel Tales.  
5:30 p. m.—Vitaphone Jubilee Hour over CBS.  
6:20 p. m.—Musical program.  
7:00 p. m.—Don Warner's Orch. and Esther White.  
7:30 p. m.—Marmola Program featuring Ray Bailey's Sextet.  
8:00 p. m.—"Happy Harry Geise."  
8:30 p. m.—KFWB Concert Orchestra.  
9:00 p. m.—Harmony Hawaiian Trio.  
9:30 p. m.—Vincenzo Pometti's Concert Orchestra.  
10:00 p. m.—Amos 'n' Andy.

AIMEE SEMPLE  
McPHERSON**DAILY EXCEPT SUNDAY**

- 7:00 a. m.—Family Altar.  
10:00 a. m.—Sunshine Hour.  
11:00 a. m.—Noonday musical, with Esther Fricke, organist.  
2:00 p. m.—The Classic Hour (ex. Wed.).  
3:00 p. m.—Bethesda Hour (ex. Mon. and Wed.).  
4:00 p. m.—Vesper Hour (ex. Tues., Wed. & Thurs.).  
**SUNDAY, MAY 28**  
10:15 a. m.—Sunday Morning Worship.

**KFSG****Los Angeles, Calif.—1120 Kc.**500 WATTS—267.7 METERS  
Angelus Temple, Echo Park. Fl. 5121  
"Four Square Gospel"Aimee Semple McPherson  
Founder, PresidentRoderick H. Morrison  
ManagerM. E. Kennedy  
TechnicianThomas Eade  
AnnouncerEsther Fricke  
Temple Organist

- 2:30 p. m.—Dispensational Message.  
6:30 p. m.—Levino Baralotti, Angelus Temple Band.  
7:00 p. m.—Musical Hour, Temple Choir, Silver Band and Organ.  
8:00 p. m.—Revival Service.  
10:00 p. m.—Music Lover's Hour.  
11:00 p. m.—Scripture Drama.

**MONDAY, MAY 27**

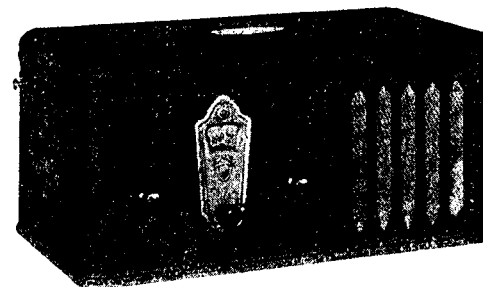
- 10:00 p. m.—Scripture Drama.  
**TUESDAY, MAY 28**  
4:00 p. m.—Foursquare Bible Study Course  
11:00 p. m.—Scripture Drama.

**WEDNESDAY, MAY 29**

- 2:30 p. m.—Divine Healing, Aimee Semple McPherson.  
**THURSDAY, MAY 30**  
4:00 p. m.—Travelogue, Rev. McIntyre.  
8:00 p. m.—Water Baptismal Service, Aimee Semple McPherson.  
10:00 p. m.—Organ Recital, Esther Fricke.

**SATURDAY, JUNE 1**

- 8:00 p. m.—Divine Healing Service, Aimee Semple McPherson.  
10:00 p. m.—Scripture Drama.

**Powell for Performance and Price****Powell AC Radio****THE MODERN ALL ELECTRIC RECEIVER***Assuring You Highest Quality in***—TONE—SELECTIVITY—BEAUTY  
—PERFORMANCE—PRICE**

Model "15"

Price \$49.50 Complete

*The Outstanding Radio Value!*

**STEEL CHASSIS—FIVE TUBES  
ILLUMINATED SINGLE DIAL CONTROL  
BUILT-IN MAGNETIC CONE SPEAKER  
BEAUTIFULLY FINISHED  
AC OPERATION**

*Attractive Dealer Proposition**Manufactured by***POWELL MANUFACTURING CO.**LOS ANGELES  
6121 S. Western  
York 9552SEATTLE  
907 Pike St.SAN FRANCISCO  
1270 Mission St.  
Underhill 3314**Powell for Performance and Price**

# Radio Activities

## Fada

All the new Fada cabinets which will be on display at the Radio Show have been "acoustically engineered" for perfect tone, according to Fred Ayres, sales manager of H. H. Walker, local Fada distributor.

According to Ayres, acoustic engineering of Fada cabinets by F. A. D. Andrea, Inc., has eliminated all cabinet vibra-



tions and hang-over tones, thus purest notes are reproduced.

Incorporated in the new Fada chassis are all the very latest advancements in radio construction, as well as many of Fada's own exclusive new improvements. Among them are:

Screen grid tubes, which have eight times the merit of ordinary tubes, harnessed to Fada circuits.

Capacity Band Pass Filter, which holds stations within their measured channels and eliminates several stations coming in at once, no matter at what point on the dial.

Fada's own super-dynamic speaker reproduces great volume or hushed whispers without distortion or loss of natural tone values.

All Fada units have been skillfully engineered to blend harmoniously together, thus a gloriously perfect tone has been achieved.

## Powell Introduces Screen Grid Receiver

Having established the name of Powell firmly in the minds of the radio buying public with their compact receiver of last year, the Powell Manufacturing Company of 6121 South Western avenue, Los Angeles, are branching out with a cabinet job this year.

Sensing the public interest in screen grid, this live organization is introducing at the Radio Show a new screen grid model, featuring power detection, dynamic speaker, two screen grid tubes, with the RF stages completely shielded and housed, in an up-to-date walnut console cabinet.

Mr. Powell said, in speaking of the new addition to their line. "We feel that the public wants more power and furniture this year, and we are giving them what they want."

## Bosch Screen Grid

The new Bosch Radio line for 1929-30 is engineered to the new screen-grid, four-element tubes, of which three are used in the radio frequency circuit. After exhaustive laboratory and practical field tests it was found that the use of less than three of these new type tubes meant a sacrifice of sensitivity and selectivity. Bosch engineers discovered, however, that when three screen-grid tubes were properly employed, sensitivity, clarity of tone and power were improved almost beyond the most hopeful expectations.

The receiver was carefully designed by Bosch engineers for compactness and excellence of operation under all reception conditions. Not satisfied with severe laboratory tests, the engineering department supervised tests in critical trial operation in many parts of the country from California to Maine.

Bosch Receivers are distributed in Southern California by the Electric Corp. of 11th and Santee Streets, Los Angeles.



## Compare Triad Tone

**TRIAD**  
Insured  
RADIO TUBES  
May Be  
Seen at the  
LOS ANGELES  
RADIO  
SHOW

Technical knowledge — engineering superiority — exclusive manufacturing processes — all combine to make Triad insured radio tubes the standard of perfection. All the original beauty of tone comes to you without distortion when a set is Triad-equipped. Compare Triad tone — it's clearer — fuller and more natural. The insurance certificate packed with every Triad Tube guarantees a minimum of six months perfect service or a proper adjustment.

Western Coast Representatives

W. J. NOEL  
508 Eddy St., San Francisco

J. A. CASH  
Pioneer Bldg., Seattle, Wash.

TRIAD MFG. CO., Inc., Pawtucket, R. I.

**TRIAD**  
INSURED  
RADIO TUBES

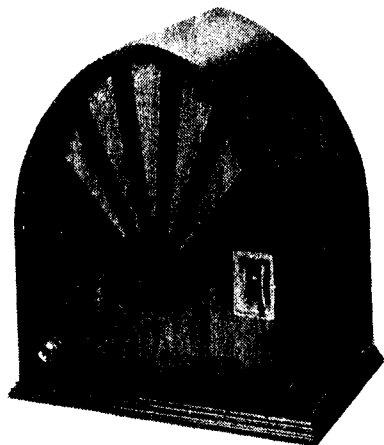
"Ask for the tube in the yellow and black triangular box."



# POWELL

## All Electric Radio Receiver

### The Clock!



**\$ 59<sup>50</sup>**  
Complete

**FEATURES:**

- 7 Tubes—All Electric
- 4 Tuned Stages
- Four Gang Condenser
- Drum Dial
- Sturdy Steel Chassis
- Heavy Duty Power Supply Unit
- Completely Shielded.

A beautiful mahogany finished clock type radio set which is just the right size for small homes and apartments.

A perfectly designed receiver using all A. C. tubes and the Type 245 Power tube in the last audio stage.

The four tuned stages make for the utmost in selectivity, picking the desired DX station cleanly and clearly out of the jumble of locals. It is also the ideal set to take to your cabin or on your vacation, because of its power, distance getting ability and selectivity.

Dealers: A few choice districts are still open for franchised dealers.  
Write or phone today.

**Powell Manufacturing Co.**

LOS ANGELES  
6121 S. Western Ave.  
YOrk 9522

SEATTLE  
909 Pike St.

SAN FRANCISCO  
1270 Mission Street  
Underhill 3314

**Call Book**

**CHANNEL No. 78**

1320 Kcys., 227.1 Meters

<b>KGHF</b>	500 watts	Pueblo, Colo.....Curtis P. Ritchie and Joe E. Finch
<b>KGIO</b>	250 watts	Twin Falls, Idaho.....Radio Broadcasting Corp.
<b>KGMB</b>	CP500 watts	Honolulu, Hawaii.....Broadcasting, Ltd.
<b>KID</b>	250 watts	Idaho Falls, Idaho.....Jack W. Duckworth, Jr.
<b>WADO</b>	1000 watts	Tallmadge, Ohio.....Allen T. Simmons
<b>WSMB</b>	500 watts	New Orleans, La. Saenger Theaters, Inc., and Maison Blanche Co.

**CHANNEL No. 79**

1330 Kcys., 225.4 Meters

<b>KGB</b>	250 watts	San Diego, Calif.....Pickwick Broadcasting Corp.
<b>KSCJ</b>	1000 watts	Sioux City, Iowa.....Perkins Bros. Co.
<b>WDRG</b>	500 watts	New Haven, Conn.....The Doolittle Radio Corp.
<b>WSAI</b>	500 watts	Cincinnati, Ohio.....Crosley Radio Corp. (Lessee)
<b>WTAQ</b>	1000 watts	Eau Claire, Wis.....Gillette Rubber Co.

**CHANNEL No. 80**

1340 Kcys., 223.7 Meters

<b>KFPY</b>	500 watts	Spokane, Wash.....Symons Broadcasting Co.
<b>WCOA</b>	500 watts	Pensacola, Fla.....City of Pensacola, Fla.
<b>WSPD</b>	LS1000 watts	Toledo, Ohio.....Toledo Broadcasting Co.

**CHANNEL No. 81**

1350 Kcys., 222.1 Meters

<b>KWK</b>	1000 watts	St. Louis, Mo.....Greater St. Louis Brdstg. Corp.
<b>WBNY</b>	250 watts	New York, N. Y.....Baruchrome Corp.
<b>WCDA</b>	250 watts	New York City.....Italian Educational Brdstg. Co., Inc.
<b>WKBQ</b>	250 watts	New York, N. Y.....Standard Cahill Co., Inc.
<b>WMSG</b>	250 watts	New York, N. Y.....Madison Sq. Garden Brdct. Corp.

**CHANNEL No. 82**

1360 Kcys., 220.4 Meters

<b>KFBB</b>	500 watts	Great Falls, Mont.....Buttrely Broadcast, Inc.
<b>KGER</b>	250 watts	Long Beach, Calif.....C. Merwin Dobyns
<b>KGIR</b>	500 watts	Butte, Mont.....KGIR, Inc.
<b>KPSN</b>	1000 watts	Pasadena, Calif.....Pasadena Star-News Pub. Co.
<b>WFBL</b>	1000 watts	Syracuse, N. Y.....The Onondaga Co., Inc.
<b>WGES</b>	500 watts	Chicago, Ill.....Oak Leaves Brdstg. Station, Inc.
<b>WJKS</b>	LS1250 watts	Gary, Ind.....Johnson-Kennedy Radio Corp.
<b>WQBC</b>	D300 watts	Utica, Miss.....Delta Broadcasting Co.

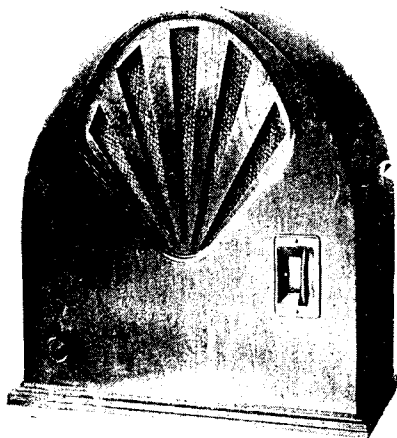
**CHANNEL No. 83**

1370 Kcys., 218.8 Meters

<b>KCRC</b>	LS250 watts	Enid, Okla.....Champlin Beating Co.
<b>KFBL</b>	50 watts	Everett, Wash.....Lease Bros.
<b>KFJI</b>	100 watts	Astoria, Ore.....KFJI Broadcasting, Inc.
<b>KFLJ</b>	100 watts	Grand Forks, N. D.....University of North Dakota
<b>KGAR</b>	100 watts	Galveston, Tex.....George Boy Blough
<b>KGCI</b>	100 watts	Tucson, Ariz.....Tucson Motor Service Co.
<b>KGDA</b>	50 watts	San Antonio, Tex.....Liberto Radio Co.
<b>KGFG</b>	100 watts	Dell Rapids, S. D.....Radio Station
<b>KGFL</b>	50 watts	Oklahoma City, Okla.....Faith Tabernacle, Inc.
<b>KGKL</b>	100 watts	Raton, N. M.....W. H. Williams
<b>KLO</b>	LS200 watts	San Angelo, Tex.....KGLI, Incorporated
<b>KOH</b>	100 watts	Ogden, Utah.....Perkins Bros.
<b>KONO</b>	100 watts	Reno, Nevada.....Perkins Bros.
<b>KOOS</b>	100 watts	San Antonio, Tex.....Perkins Bros.
<b>KRE</b>	100 watts	Marshfield, Ore.....First Cong. Church of Berkeley
<b>KVL</b>	100 watts	Berkeley, Calif.....First Cong. Church of Berkeley
<b>KWKO</b>	100 watts	Seattle, Wash.....Arthur C. Dalley
<b>WBTM</b>	100 watts	Kansas City, Mo.....Wilson Duncan Brdstg. Co.
<b>WRRJ</b>	CP100 watts	Danville, Va.....Clark Electric Co.
<b>WCBM</b>	100 watts	Richmond, Va.....Grace Covenant Presbyterian Church
<b>WEHC</b>	250 watts	Baltimore, Md.....Baltimore Broadcasting Corp.
<b>WELK</b>	100 watts	Emory, Va.....Emory and Henry College
<b>WFDV</b>	CP100 watts	Philadelphia, Pa.....Howard R. Miller
<b>WGL</b>	100 watts	Rome, Ga.....Dolles Golings
<b>WGL</b>	100 watts	Ft. Wayne, Ind.....Allen Wayne Co.
<b>WHRD</b>	100 watts	Mt. Orab, Ohio.....E. P. Moler
<b>WHBQ</b>	100 watts	Memphis, Tenn.....Brdctg. Station WHBQ, Inc.
<b>WHBQ</b>	100 watts	Calumet, Mich.....Upper Mich Brdstg. Co.



# POWELL



## 4 SCREEN GRID 4 GANG CONDENSOR

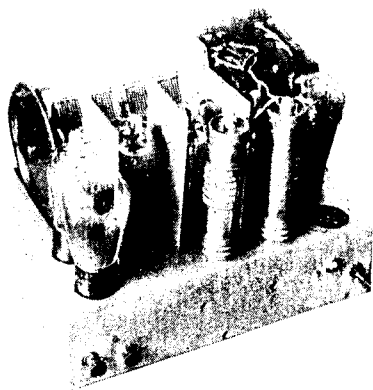
### Full Dynamic Speaker

At last a better radio in the Midget field.

In the Powell "Cathedral Radio" you find the utmost in refinement.

A simple, beautiful cabinet—four screen grid assuring plenty of power—four gang condenser giving positive selectivity—a sturdy steel chassis completely shielded and a heavy duty power pack.

All these features combined with "Powell" precision manufacturer assures you at lasting enjoyment and perfect reception.



There is a Powell Dealer in Your District or Call Us for His Number

## POWELL MANUFACTURING CO.

Los Angeles

6121 S. Western Ave.  
TWin Oaks 9552

Seattle

909 Pike Street

CHANNEL No. 83—Cont.		1370 Kcys., 218.8 Meter
WLVA	100 watts	Lynchburg, Va. .... E. A. & P. P. Allen
WLEY	LS250 watts	Lexington, Mass. .... Lexington Air Stations
WMBR	100 watts	Tampa, Fla. .... F. J. Reynolds
WPOE	100 watts	Patchogue, N. Y. .... Nassau Brdestg. Corp.
WQDM	15 watts	St. Albans, Vt. .... A. J. St. Antoine
WRAK	50 watts	Williamsport, Pa. .... Clarence R. Cummins
WRBJ	10 watts	Hattiesburg, Miss. .... Woodruff Furniture Co.
WRBT	100 watts	Wilmington, N. C. .... Wilmington Radio Association
WRDO	CP100 watts	Augusta, Me. .... Albert S. Woodman
WRJN	100 watts	Racine, Wis. .... Racine Broadcasting Corp.
WSVS	50 watts	Buffalo, N. Y. .... Seneca Vocational School
CHANNEL No. 84		1380 Kcys., 217.3 Meter
KQV	500 watts	Pittsburgh, Pa. .... Doubleday-Hill Elec. Co.
KSO	500 watts	Clarinda, Ia. .... Berry Seed Co.
WKHH	1000 watts	LaCrosse, Wis. .... WKBH, Inc.
WSMK	200 watts	Dayton, Ohio. .... Stanley M. Krohn, Jr.
CHANNEL No. 85		1390 Kcys., 215.7 Meter
KLRA	1000 watts	Little Rock, Ark. .... Arkansas Brdestg. Co.
KOY	500 watts	Phoenix, ARIZ. .... Nielsen Radio Supply Co.
KUOA	1000 watts	Fayetteville, Ark. .... University of Arkansas
WHK	1000 watts	Cleveland, Ohio. .... Radio Air Service Corp.
CHANNEL No. 86		1400 Kcys., 214.2 Meter
KLO	500 watts	Ogden, Utah. .... Perry Building Co.
KOCW	LS500 watts	Chickasha, Okla. .... Oklahoma College for Women
WBAA	500 watts	W. Lafayette, Ind. .... Purdue University
WBBC	500 watts	Brooklyn, N. Y. .... Brooklyn Broadcasting Corp.
WCGU	500 watts	Brooklyn, N. Y. .... U. S. Broadcasting Corp.
WCMA	500 watts	Culver, Ind. .... General Brdestg. Co.
WKBF	500 watts	Indianapolis, Ind. .... Indianapolis Brdestg., Inc.
WLTH	500 watts	Brooklyn, N. Y. .... Paramount Brdestg. Corp.
WSGH-WSDA	500 w.	Brooklyn, N. Y. .... Paramount Brdestg. Corp.
CHANNEL No. 87		1410 Kcys., 212.6 Meter
KFLV	500 watts	Rockford, Ill. .... Rockford Broadcasters, Inc.
KGRS	1000 watts	Amarillo, Texas. .... Gish Radio Service
WBCM	500 watts	Bay City, Mich. .... James E. Davidson
WDAG	250 watts	Amarillo, Texas. .... Natl. Radio & Brdestg. Corp.
WHBL	500 watts	Sheboygan, Wis. .... Press Pub. Co.
WLFX	500 watts	Lexington, Mass. .... The Lexington Air Stations
WMAF	500 watts	South Dartmouth, Mass. .... Round Hills Radio Corp.
WODX	500 watts	Mobile, Ala. .... Mobile Broadcasting Corp.
WRBX	500 watts	Roanoke, Va. .... Richmond Develop. Corp.
WSFA	500 watts	Montgomery, Ala. .... Montgomery Broadcasting Co.
WSSH	500 watts	Boston, Mass. .... Tremont Temple Baptist Church
CHANNEL No. 88		1420 Kcys., 211.1 Meter
KBPS	100 watts	Portland, Ore. .... Benson Polytechnic School
KFIZ	100 watts	Fond du Lac, Wis. .... The Reporter Printing Co.
KFQU	100 watts	Holy City, Calif. .... W. E. Riker
KFQW	100 watts	Seattle, Wash. .... KFQW, Inc.
KFXD	50 watts	Flagstaff, Ariz. .... Service Radio Co.
KFYX	100 watts	Flagstaff, Ariz. .... Mary M. Costigan
KFYO	LS250 watts	Ahilene, Tex. .... Kirksey Bros.
KGFF	100 watts	Alva, Okla. .... KGFF Broadcasting Co.
KGGC	100 watts	San Francisco, Calif. .... The Golden Gate Brdestg. Co.
KGIW	100 watts	Trinidad, Colo. .... Leonard E. Wilson
KGIY	CP100 watts	Las Vegas, Nev. .... J. M. Heaton
KGKX	100 watts	Sandpoint, Idaho. .... C. E. Twiss
KICK	100 watts	Red Oak, Iowa. .... Red Oak Radio Corp.
KLPM	100 watts	Minot, N. D. .... John B. Cooley
KORE	100 watts	Eugene, Ore. .... Eugene Broadcast Station
KTAP	100 watts	San Antonio, Tex. .... Alamo Broadcasting Co.
KTUE	100 watts	Houston, Tex. .... William John Uhalt
KXL	100 watts	Portland, Ore. .... KXL Broadcasters Inc.

**WE STAND BEHIND EVERY POWELL**

Every Powell radio receiver is guaranteed by us for three months against defects in workmanship and materials. Our years of experience in manufacturing correctly designed and engineered sets has resulted in this new Powell that will produce results and stand up under constant use for years.

The Powell operates without excess aerial and can readily be used as a portable receiver, weighing only 11½ pounds. Many are performing in crowded districts, without an aerial of any type. Have one sent to your home, and, free of charge, test all its features yourself. No obligation whatever.

**Tubes are guaranteed by their respective manufacturers**

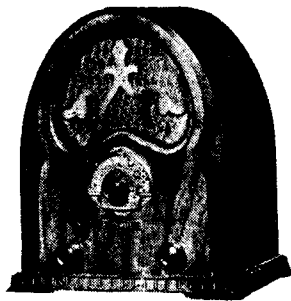
**POWELL  
MANUFACTURING CO.**

**LOS ANGELES**

**For Sale by**

**WE STAND BEHIND EVERY POWELL**

*The*  
**POWELL**  
*Junior*



**THE RADIO  
WITH A THOUSAND USES**

ABOUT AS TALL AS A TELEPHONE  
BUT WITH SO MUCH PUNCH IT  
CAN FILL A LARGE ROOM WITH  
RADIO ENTERTAINMENT ♦ ♦ ♦  
YET SO MILD MANNERED IT CAN  
BE TUNED DOWN TO A WHISPER

**Pentode ♦ Screen Grid ♦ High Gain Coils  
Walnut Cabinet ♦ Full Vision Dial ♦ Tone  
Control ♦ Selectivity ♦ Dynamic Speaker**

# The Why of Powell Performance



Four A.C. type tubes with a Pentode Power tube in the last stage of audio. Socket and extension cord furnished all ready to plug into your light circuit and start operation.

## Illuminated Dial

The ample size of the dial allows easy location of all stations and rotates with ease. Extreme ease in tuning, rare and precise station selection, is the result of using the latest straight-line type of condenser and a special high gain R. F. coil.

## Tone Control

The addition of the Tone Control in this model is one of its outstanding features. It allows that precise tone modulation appreciated in more expensive instruments.

## Sturdy Steel Chassis

The working parts of the Powell hookup are all firmly and rigidly held in place by the sturdy steel chassis. Heat and weather conditions cannot affect them.

## Heavy Duty Power Supply Unit

These are of Powell design and manufacture, and are rigorously tested and inspected to withstand constant use without deterioration or failing to function.

## Compact in Size—Easy to Move

Fits into the smallest space and performs like radios three times its size. For the second set in the home, where two types of programs are enjoyed by different members of the family, the Powell answers this problem at such a small cost. It is ideal for the vacation home, whether that be mountain, camp or seashore.

# The POWELL Columnar

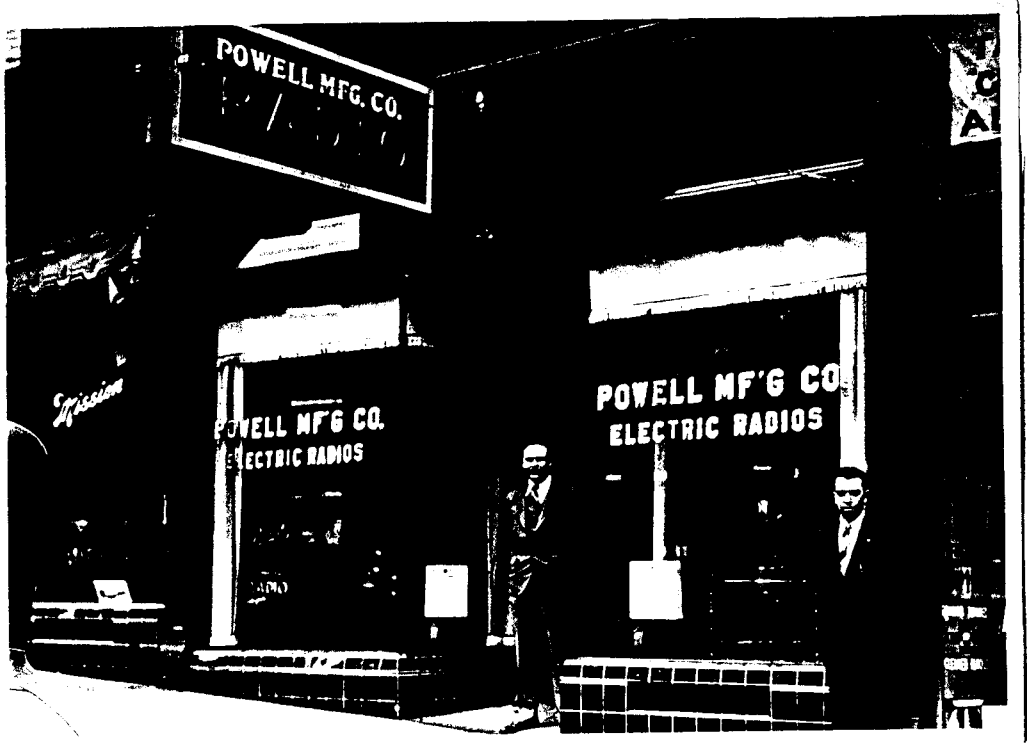


A new distinctive column type of radio that fills the needs of a compact radio without an extra table. Made of beautiful walnut veneer with a piano hand rubbed finish. Stands thirty-four inches high and nine inches square. Just the right size to place by a chair or near a bed and makes a wonderful smoking stand.

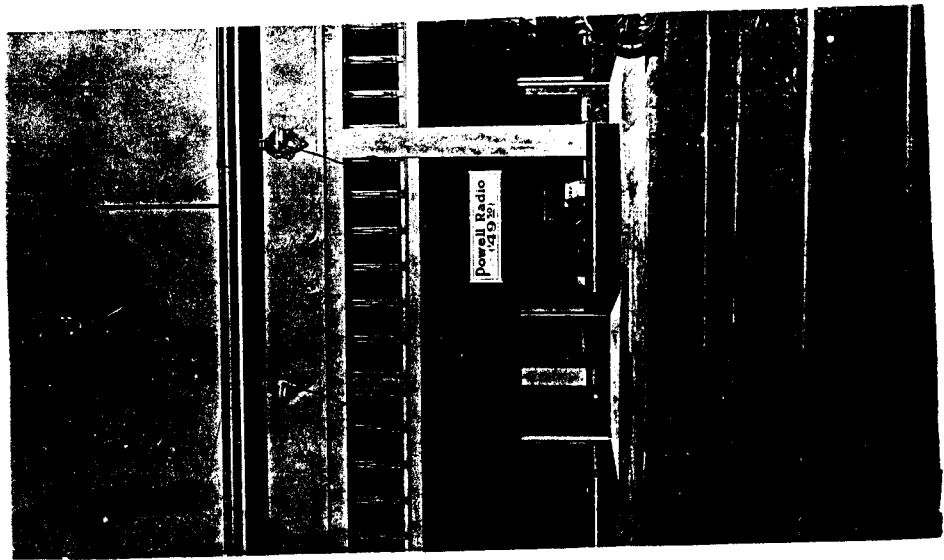
The radio is the standard four tube chassis with Pentode tube which gives this model the tone quality of a large console set.

## Lowest Cost of any Radio

After trying out the Powell, analyze its cost. The only way to prove this difference is to have a Powell in your home for a day. Try it out and **note** the difference. We will back up all our claims by actual demonstration, allowing you to be the judge. It costs you nothing, and there is no obligation whatever.



*Handwritten notes:*  
S. M. Co.  
149 St.



# POWELL BROS RADIO PRODUCTS

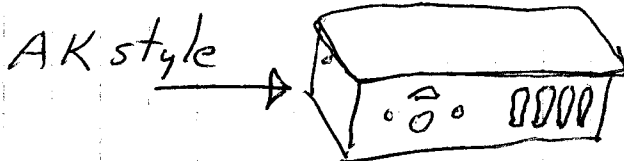
START 25-26?

26-27-28 B ELIMINATOR

1927 - "B" eliminator Jan 2 P51 1927 - ANNOUNCEMENT 12 25  
 "B" eliminator unconditionally guaranteed

28 "ALL ELECTRIC" RADIO 4 TUBES 42.50  
 SEPT 1928 RELEASED - HORN SPR  
 METAL CHASSIS  
 (LATER DESIGNATED MODEL 10?) NOV 25, P59

29 MODEL 15, 49.50 AR6, 5 TUBES, STEEL CHASSIS



at  
 CONSOL E<sub>N</sub> 79.50 AUG 31, 2 SCREEN GRID TUBES  
 P113

30 SPRING "THE CLOCK" 1st CATHEDRAL  
 STYLE 7 TUBES



← FLUSH  
 FAN  
 PATTERN

ADVERTISED IN JUN 1930  
 FALL ALL ELECTRIC  
 "CATHEDRAL" 6 TUBES

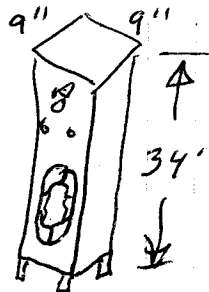


← RECESSED  
 FAN  
 PATTERN

31 POWELL JR (PEEWEE) 4 TUBES

POWELL COLUMNAR

CUTE, HOH?



4  
 11" or  
 50  
 ↓

32 PROBABLY OUT OF BUSINESS





2 2 11





# The **POWELL** | **Columnar**



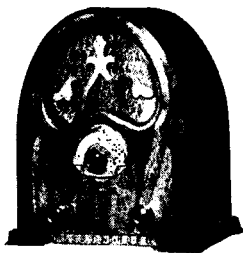
A new distinctive column type of radio that fills the needs of a compact radio without an extra table. Made of beautiful walnut veneer with a piano hand rubbed finish. Stands thirty-four inches high and nine inches square. Just the right size to place by a chair or near a bed and makes a wonderful smoking stand.

The radio is the standard four tube chassis with Pentode tube which gives this model the tone quality of a large console set.

## **Lowest Cost of any Radio**

After trying out the Powell, analyze its cost. The only way to prove this difference is to have a Powell in your home for a day. Try it out and note the difference. We will back up all our claims by actual demonstration, allowing you to be the judge. It costs you nothing, and there is no obligation whatever.

*The*  
**POWELL**  
*Junior*



**THE RADIO  
WITH A THOUSAND USES**

ABOUT AS TALL AS A TELEPHONE  
BUT WITH SO MUCH PUNCH IT  
CAN FILL A LARGE ROOM WITH  
RADIO ENTERTAINMENT ♦ ♦ ♦  
YET SO MILD MANNERED IT CAN  
BE TUNED DOWN TO A WHISPER

Pentode ♦ Screen Grid ♦ High Gain Coils  
Walnut Cabinet ♦ Full Vision Dial ♦ Tone  
Control ♦ Selectivity ♦ Dynamic Speaker

B- DET. INT. AMP.

**POWELL**  
"B"

**ELIMINATOR**

**POWELL MFG. CO.**

LOS ANGELES, CALIF.

# POWELL BROS RADIO PRODUCT LINE

L.A. CITY DIRECTORY + ADS

YEAR	PRODUCT	PRICE		LOCATION
24				
<del>26</del> 27	'B' ELIMINATOR	12.25	JAN 27 EARLY MODEL NO. TUBES, MORE THAN ONE MODEL MADE	1609 W. 54th
28	ALL ELECTRIC RADIO MODEL 10	42.50	READY SEPT. 12 4 TUBES, METAL CHASSIS, AIR COLUMN SPKR, NOV 24	4009 S. WESTERN
29	MODEL 15 CONSOLE	49.50 79.50	APR 6, 5 TUBES STEEL CHASSIS MAY 26 AUG 31 MAG. CONG. SPKR (BETTER MIX) (BETTER MIX) CONSOLE CABINET (FLOOR), 2 SCREEN GRIDS, POWER DETECTION, DYNAMIC SPKR 145 TUBE 7 TUBES, 4 TUNED STAGES 245 OUTPUT 6 TUBES	6221 S. WESTERN 907 PIKE ST. SEATTLE Seattle 909 PIKE ST.
30	called "The Clock" ALL ELECTRIC CATHEDRAL			6121 S. WESTERN 909 PIKE SEATTLE
31	POWELL JUNIOR POWELL COLUMNAR ARM CHAIR	SEE WGL	4 TUBES 9 X 9 X 34 BOTH-SAME CHASSIS TONE CONTROL	
32				

R.D. Jan 1, 1927 POWELL MFG CO.  
MID 1930 - WENT TO GILFILLAN