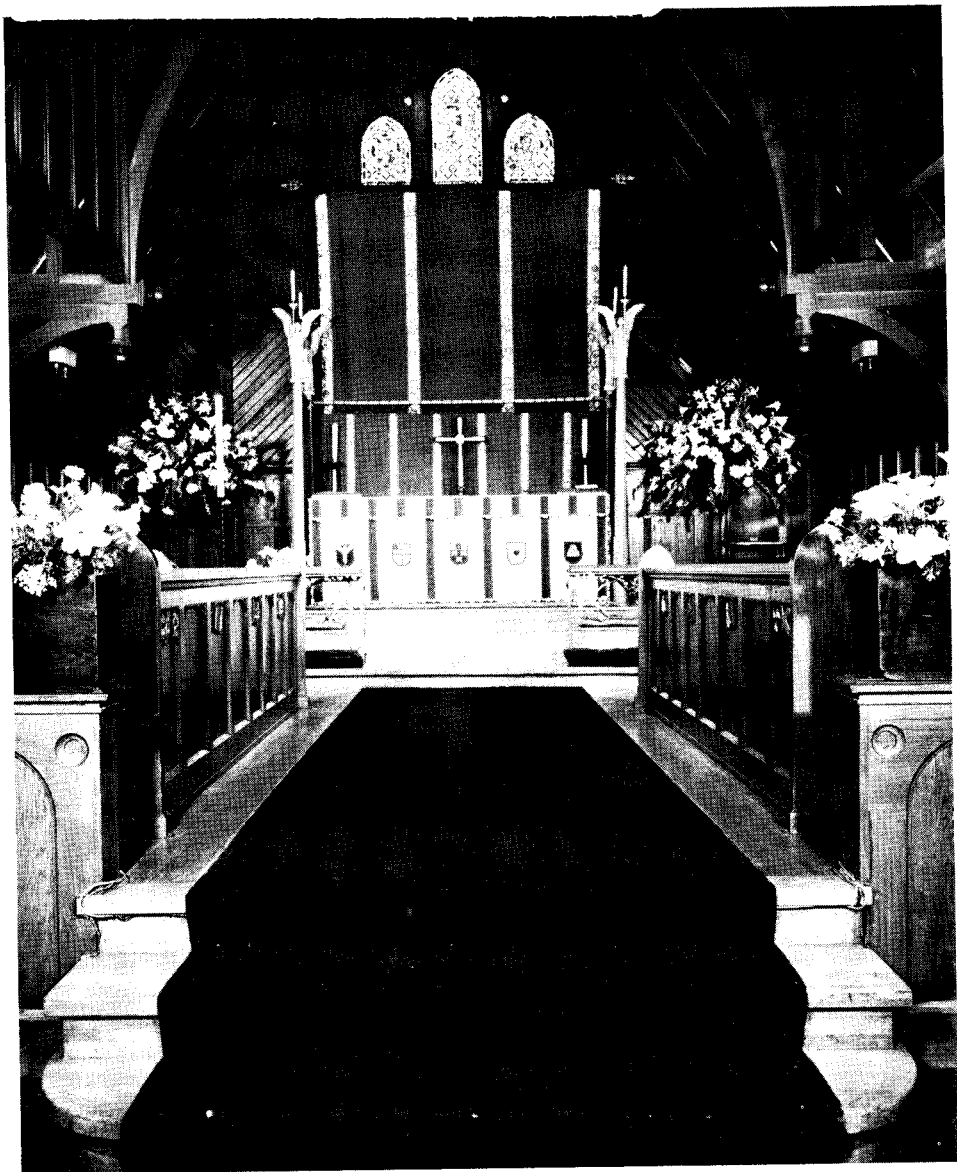


V.F. LOS ANGELES. CHURCHES.  
PROTESTANT EPISCOPAL

PHILOSOPHY & RELIGION DEPT  
LOS ANGELES PUBLIC LIBRARY



REFERENCE THE EBB AND FLOW  
DO NOT LOAN Diamond Jubilee Issue

WHITSUNTIDE 1962

REGULAR SCHEDULE OF SERVICES

**SUNDAYS** - The Holy Communion..... 7:30 a.m.  
Family Service and Instruction.... 9:15 a.m.  
Choral Service and Sermon..... 11:00 a.m.

(Nursery every Sunday - 9 a.m. to 12:30 p.m.)

**WEEKDAYS** - The Holy Communion  
Monday, Friday and Saturday.. 8:30 a.m.  
Tuesday and Thursday..... 9:30 a.m.  
Wednesday..... 6:30 a.m.  
Holy Days..... 5:45 p.m.

Morning Prayer Daily - Fifteen minutes  
before Holy Communion.

Evening Prayer Daily..... 5:30 p.m.  
Saturday..... 6:00 p.m.

Healing Service - Tuesday..... 10:00 a.m.

Confessions - Saturday.....5:00-6:00 p.m.

**SEE PARISH DIRECTORY** for information about Parish cus-  
toms, groups and organizations,  
other statistics. Available in  
the Parish Office  
1227 Fourth Street  
Santa Monica, California

EXbrook 5-2329

PARISH DIRECTORY

THE RECTOR . . . . .	The Reverend Robert C. Rusack
Curate . . . . .	The Reverend George F. Hartung
Curate and Vicar of Malibu . . . . .	The Reverend Jack L. Cowan
Pastoral Counselor . . . . .	The Reverend Neville Tinker
Parish Missionary . . . . .	The Reverend José D. Carlo
Organist and Master of Choristers . . . . .	Joseph A. Kantz
Treasurer . . . . .	Frederick W. Mahood
Principal of the Day School . . . . .	Mrs. E. Phyllis Devey
Parish Secretary . . . . .	Mrs. Jack G. Martin
Day School Secretary . . . . .	Mrs. Walter A. Garrick
Acting Rector's Secretary . . . . .	Mrs. Wirth E. Giffin
Sexton . . . . .	Claude Hyche
Sound and Light Director . . . . .	Frederick M. Armitage

THE EBB AND FLOW A monthly publication  
of the Parish Church  
of St. Augustine-by-the-Sea in the City  
of Santa Monica, California.

Editor - The Rector.

The cover picture is the chancel and sanctuary of the Parish Church of St. Augustine-by-the-Sea, decked for Easter, 1962. This photograph and others, except as otherwise designated, are by Robert Freligh Photography. The editor is grateful to members of the following families for loaning pictures taken in the past: Yeaton, Mahood, Williams and Morgan.

The editor wishes to dedicate this special issue to a loyal staff of co-workers in the parish (named above) who are a constant source of inspiration as they work unceasingly for all that is for the betterment of the Church of the living Christ.

OCT 31 1969

HISTORICAL SKETCH  
of  
THE PARISH CHURCH OF ST. AUGUSTINE-BY-THE-SEA  
by  
Rupert G. Haley

On June 10th, 1887, just twelve years after the township of Santa Monica was laid out, the cornerstone of the Episcopal Church of St. Augustine-by-the-Sea was placed by the Right Reverend John Henry Wingfield of Northern California. He was acting for Bishop Kip of California, and nearly all the clergy then residing in Southern California were present. With that ceremony the presently oldest public building in Santa Monica came into being. "By the Sea" it was, for the sparsely built up area to the west brought the Pacific Ocean to our church's door. For many years the sound of the surf could be heard in the quiet of Evensong.

Nine years before, in 1876, the first Anglican services in Santa Monica were held in Rogers Hall, a small building on Third Street between Oregon Avenue (now Santa Monica) and Utah Avenue (now Broadway). The Reverend J. B. Gray was the officiating clergyman. Not until 1885 were regular services conducted when the Right Reverend William Ingraham Kip, the great pioneer bishop of California, appointed the Reverend Henry Scott Jefferys as priest-in-charge of the Santa Monica Mission.

Senator John P. Jones and Mrs. Arcadia deBaker, prominent figures in Santa Monica's early days, donated two lots on Fourth Street as a site for a church. After a strenuous canvass for some \$3,000.00 the church was built and first used for public worship on August 28th, 1887, the festival of St. Augustine, which happened to fall on Sunday in that year. The preacher was the Reverend Canon John D. H. Browne of Pasadena (formerly from Halifax, Nova Scotia), who was destined to become the rector of St. Augustine-by-the-Sea a few years later. Several clergy served the parish from the time of its opening until the turn of the century. The Reverend Ivan Merlin-Jones served for the longest period, and during his tenure a hall was constructed to the south, and a surpliced choir was introduced. Canon Browne was called as rector in 1900, and he was to serve for fifteen years.



ABOUT 1935

At the left, the author of this sketch. At the right, the present treasurer.



ABOUT 1912

Canon Browne and choristers in front of the old Parish Hall. See church being enlarged.

Under Canon Browne's leadership the parish enjoyed steady and healthy growth. The list of communicants grew from some 27 in 1900 to 258 in 1915. The church itself was twice enlarged during his rectorship, and a pipe organ was placed in the transepts.

In 1915 Canon Browne retired, but was a revered figure in and about Santa Monica for many years afterwards in his old-fashioned clerical garb and shovel hat. He would often take services or assist his successor, the Reverend Wallace Nelson Pierson.

Mr. Pierson was rector of the parish for thirty-five and more years. Soon after his arrival the congregation acquired the house and lot immediately to the north of the church. This served as a rectory for many years. Here the Pierson family brought warmth and life to the activities of the Parish. Later the rectory was moved to a lot further north, and this left room for the erection of a new Parish Hall in 1925.

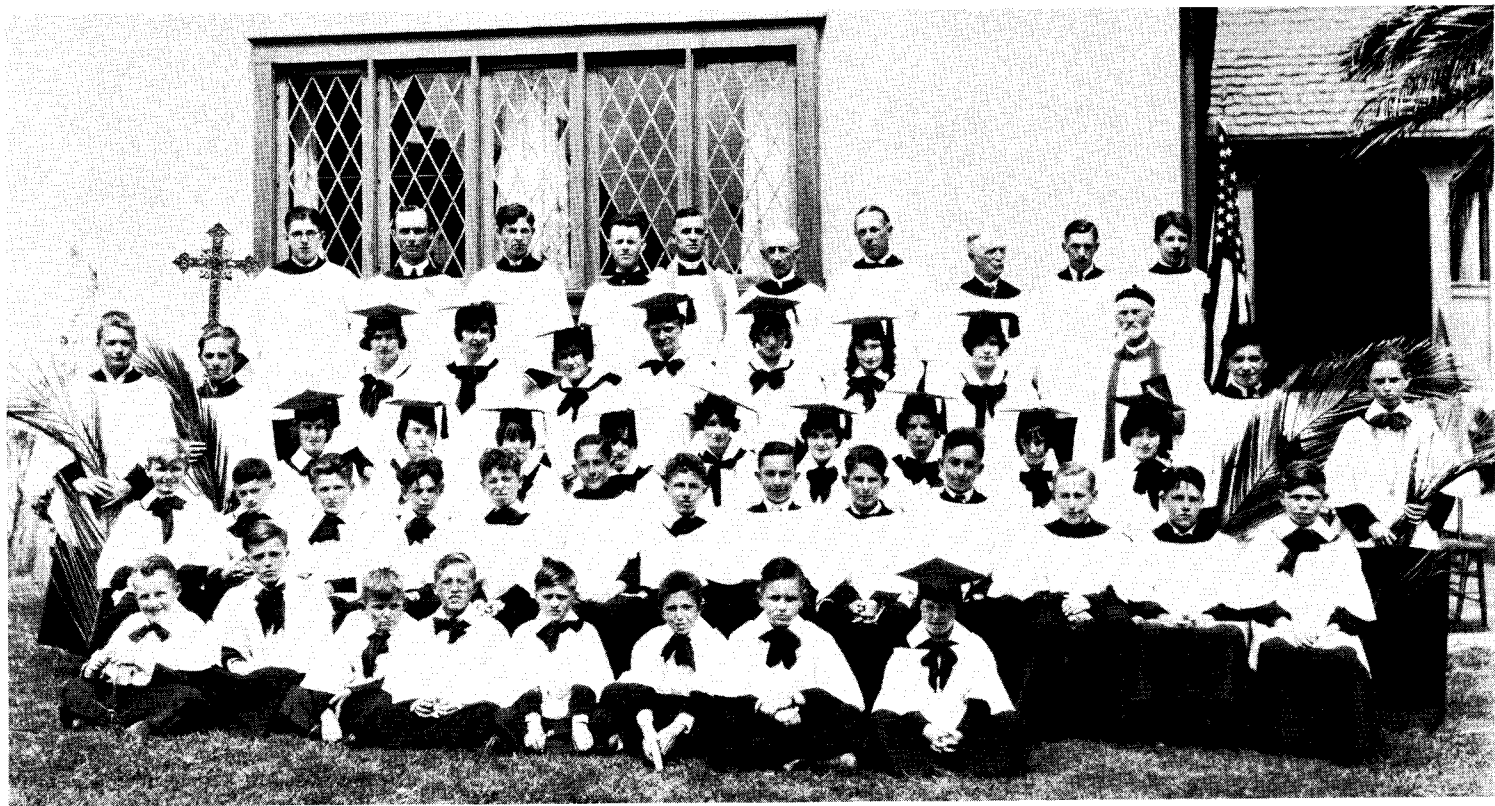
These were stirring times in the life of St. Augustine-by-the-Sea Church. Guilds and groups flourished. A boys' choir added beauty to the Sunday evening services, and its rendition of Stainer's "Crucifixion" was an annual Lenten service. Badminton and basketball were popular in the Parish Hall. The lot to the south of the Church was an outdoor basketball court where choirs from other churches in the Diocese competed with that of the home church, usually followed by a supper and combined singing at Evensong in the Church. Later this lot became a lovely garden in which flowers and shrubs and shrines portrayed the map of the Holy Land. High hedges sheltered this beautiful spot from the street. Now the Christian Education Building occupies this location.

Even as brief a history as this cannot overlook one layman, Mr. George Holstein, a most generous benefactor of this parish. This gentle vestryman saved the wooden church from destruction by termites, and also placed the lateral rods one may see today to hold the walls together. The lights in the nave are his gift. He erected the lovely Lytch Gate and established an endowment fund to be used in case the Church has to be replaced. This fund has waxed and is intact today.

Father Pierson retired in 1951. The vestry called the Reverend Clifford E. Barry Nobes as rector. Another expansion in facilities and activities began. The rectory was removed and Pierson Hall (the Common Room), three excellent classrooms, and a fine kitchen were built. The need for a Parish Day School was realized, and the Parish authorized the same in 1954. The school opened that fall with one teacher and two pupils. From this modest start the school has never looked back. It has gained its maximum growth with six grades and a kindergarten, and now has a full-time staff of nine and a part-time staff of another eight persons. The school is under the able supervision of Mrs. E. Phyllis Devey, who is directly responsible to the rector, wardens and vestrymen. The School is now housed in the Educational Building provided by the parish and interested non-parish Day School families in 1960.

During the nineteen-fifties, mainly through the effort of the men of the Brotherhood of St. Andrew, a parochial mission was established in Malibu. (St. Augustine's Parish had in previous years established missions in Venice and Sawtelle, and Father Pierson aided the founding of a parish in Pacific Palisades and another in Westwood.) For many months the clergy and laity of St. Augustine's Parish conducted Morning Prayer or celebrated the Eucharist in cocktail lounges, restaurants, an engineering firm, an orchid patio, or in homes. Finally, in 1961, a lot was purchased overlooking the ocean at Paradise Cove. A Chapel and Educational Building have been erected. The Parish Clergy and Laity have plans for expansion to meet growth in Malibu.

In 1958 Father Nobes was called to Kansas City and the Reverend Robert Claflin Rusack assumed the rectorship of the Parish. Seven days a week the church is used for worship, and the other buildings hum with activity. Yet in the old wooden building, now seventy-five years of age, a deep feeling of peace and quiet exists which only generations of people at public and private worship could have created.



The clergy and choristers in about 1930.  
Father Pierson, back row center. (Note new Parish Hall) Canon Browne in front of flag.



A BRIEF DESCRIPTION  
of  
THE PARISH CHURCH OF ST. AUGUSTINE-BY-THE-SEA

The Parish Church of St. Augustine-by-the-Sea, and its surrounding buildings, covers four city lots amid the business and financial buildings of Santa Monica. The Church also maintains two parking lots across the alley.

Your first glimpse of the Church is as you walk along Fourth Street, between Wilshire Boulevard and Arizona Avenue. The brick walls of Pierson Hall, the Church and the Educational Building, nestle in amongst the commercial offices on the east side of the street. If you are out for an early morning walk, possibly finding the morning heavy with fog, you are glad to find a refuge. Life at this old Parish Church caught hold of the wings of the morning as you breakfasted at home, or in your hotel. Morning Prayer has been read, and the Holy Eucharist celebrated. The Day School Chapel service is just about over.

You walk inside. The architecture of the Church is affectionately called "Carpenter's Gothic." The building is of redwood, save for the Chapel of St. Ambrose which was erected in 1941. (For notes on this Chapel read on in this booklet.) The first portion of the building erected was that near the great windows and the east end. In later years, the church was cut in half and the Chancel and the Sanctuary were moved eastward. Matching sections of the Nave were added, and the Chancel was enlarged. These enlargements took place in Canon Browne's time.

As you stand at the rear of the Church, notice the St. Andrew window above the south entrance. It is of modern design, patterned after medieval windows. As you walk down the Nave, notice the simple but handsome "Creation" and "Redemption" windows. The large windows, where the Nave widens, tell the story of Christmas and Easter. The nativity window is to the south, the resurrection window to the north. These windows, created by the Judson Studios in Pasadena, tell a religious story as true stained glass windows were designed to do. The windows along the rest of the Nave portray various "heroes of the faith." Along the south wall you will find St. Paul, bearing the "sword of the spirit;" St. Mary, our Lord's mother; St. Augustine of Hippo in North Africa, patron saint of the

parish church; and St. Helena. She was the mother of the Emperor Constantine, whose conversion to Christianity in the 4th century marked the end of the persecutions. Along the north wall you see depicted St. Peter; St. John, the beloved disciple; St. Augustine of Canterbury, who established the Christian Church in southern England in 597; and St. Monica, mother of St. Augustine of Hippo, and the patron saint of our city.

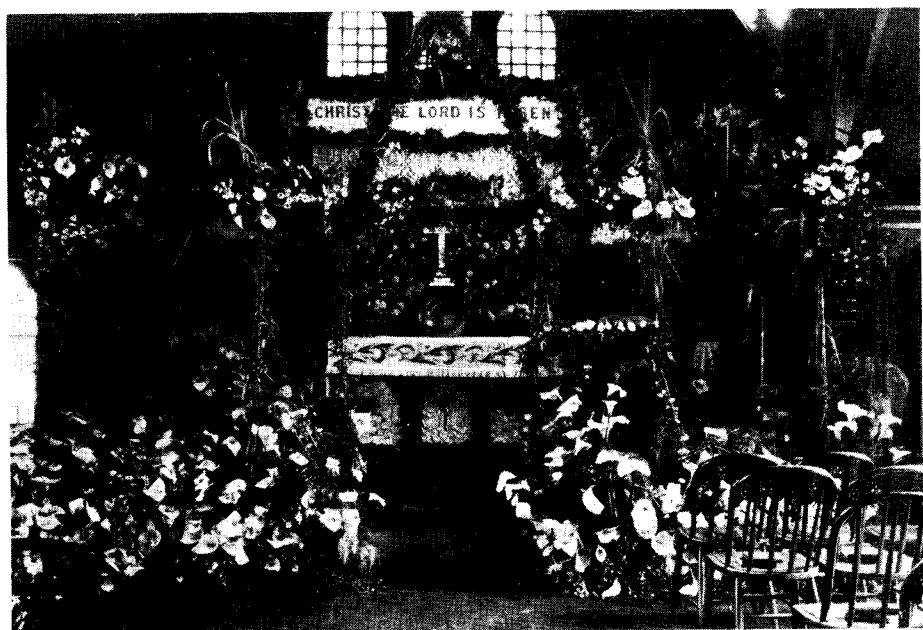
You have now reached the crossing. Above you is a rood beam, with the figure of the Crucified Christ. On the beam itself are four shields representing from left to right - St. Ambrose, St. Mary the Virgin, St. John and the patron saint of the parish. As the nave of the church represents the Church on earth (Militant), so the chancel represents the Church in Paradise (Expectant), and the Sanctuary is symbolic of the Church in Heaven (Triumphant). As persons go to the altar they pass under the Crucified Christ, go through the gates of death into Paradise, and then kneel at the gates of Heaven to receive the Blessed Sacrament - "The Body and Blood of Christ." The pulpit stands to the left, and the old eagle lectern to the right. At the lectern "the Word of God" is read, and from the pulpit it is interpreted and preached. The pew-fronts in the nave are the hand work of a former parishioner.

As you stand in the midst of the choir stalls you will note the shields of the twelve apostles on the fronts. To the north is the organ chamber, and to the south is the organ console and the outer sacristy. The small windows above the chancel depict the symbols of the four men who wrote the gospels. They are the Evangelists: St. Matthew, the winged man's face; St. Mark, the lion's head; St. Luke is depicted by an oxen head; and St. John by an eagle.

Next, you look toward the altar. The present altar and its hangings was installed in 1960. It was designed so as to harmonize with the architecture of the church, and to enhance the ordered worship of the Anglican Communion. As is traditional the altar is always vested in full frontal and according to ancient custom two candles only stand on the altar itself, with the cross in the midst. The Cross

and Candlesticks are of a rich design, created in oak and sterling silver in England. The four hand-carved limewood Angels atop the riddel posts are emblematic of the angels around the throne of God in heaven, singing "Holy, Holy, Holy." These were executed in the studios of the Warham Guild, Ltd., in London. The high altar window was created in 1960 according to the method used at Chartes Cathedral. The three fish in a circle in the central panel signify that man's salvation comes from the Triune God. (The fish is an ancient symbol of our Lord.) The wheat and grapes in the other two panels are emblematic of the Bread and Wine of the Holy Eucharist.

As you return down the nave your eyes will notice the flags of the United States of America and the Protestant Episcopal Church in the United States of America. Beyond a great archway is the Chapel of St. Ambrose.



The Church at Easter about 1900  
The chancel had not yet been enlarged.

A BRIEF COMMENT ON THE ARCHITECTURE AND CHARACTER  
of  
THE CHAPEL OF ST. AMBROSE  
by  
Carleton Monroe Winslow, F.A.I.A.

The Chapel of St. Ambrose of the Parish Church of Santa Monica is structurally an extension of the nave of the old church. The lines of the roof and exterior walls remain the same but the materials used are different. The requirements of the zoning commission necessitated the walls being of fire and earthquake proof masonry, the roof covering also to be fire-proof. Hence the walls are of brick, reinforced by steel rods, showing on the interior as well as the exterior. This gives the passerby the first impression that the church structure is all of brick.

Architecturally, the old church may be designated "Carpenter Gothic," a term of mild reproach in the minds of some. To others, such as this writer, it is a term to be stoutly defended as one of dignity and honour. Of course, some of the "Carpenter Gothic" churches are bad, crude and in wretched taste, but we have hundreds of examples in this country in our Anglican Communion which are beautiful in their proportions and in their religious expression. Take St. Augustine's Church for example. The interior is exceptional devotional and religious in character. One knows, when in it, that he is in a Church, and there for the prime purpose of worshipping our Lord. The stained glass emphasizes this reaction.

That a church for our Anglican Communion should be worked out in this spirit is obvious and patent. That is what has been striven for in the Chapel of St. Ambrose.

While The Chapel of St. Ambrose is an elongation of the old nave and can be used as such for services celebrated at the high altar, nevertheless it is a complete little church in itself. In the sanctuary is the altar of Indiana limestone, a table altar, built into the masonry wall at the back. The mensa (table-top) is a slab of pale grey Tennessee marble which has five crosses engraved into its face indicating the five wounds which our Lord bore at His crucifixion. The top of the altar is formed of non-absorbent mar-



**THE BAPTISTRY**

The Rector has just baptized a Day School student, 1961.

ble so that it can be cleaned and ceremonially washed at the appropriate times. (The aumbry, or house, for the Blessed Sacrament is built into the east wall.) The aumbry is cut from Rouge Oriental marble, the door also of marble with a panel of glass mosaic set into its face. A group of semi-precious stones adorns the mosaic, some of which were given by the architect from a collection once belonging to the first Bishop of Los Angeles.

Back of the altar is the dossal, hanging from an iron rod. The dossal is changed to the unbleached linen of the Lenten Array at the appropriate season. Over the dossal is a beautiful little window depicting the Baptism of St. Augustine at the hands of St. Ambrose. (This is a most unique window, as it is octagonal in shape, showing Adeodatus, son of St. Augustine.)

(The altar cross and candlesticks are of wrought iron and were secured from the Warham Guild of London in 1960 to replace temporary church-shop ornaments.)

A little marble credence shelf is built into the western wall of the sanctuary. In the nave are kneeling cathedral chairs.

On the north side of the Chapel is the Baptistry with wrought iron gates in the entrance arch. An old font of stone, which once stood beneath the west window of the former nave ending, stands in the center with a handsome symbol window behind it. This was given by St. Helena's Guild and contains the symbols of Holy Baptism, the Holy Spirit, St. Augustine and St. Monica.

The west wall of the Chapel is adorned with a window in three lancets, with splendid effigies of the first two bishops of the American Episcopal Church, with the coat of arms of the Diocese of Los Angeles in the center. Another shield of St. Augustine is below the Diocesan escutcheon.

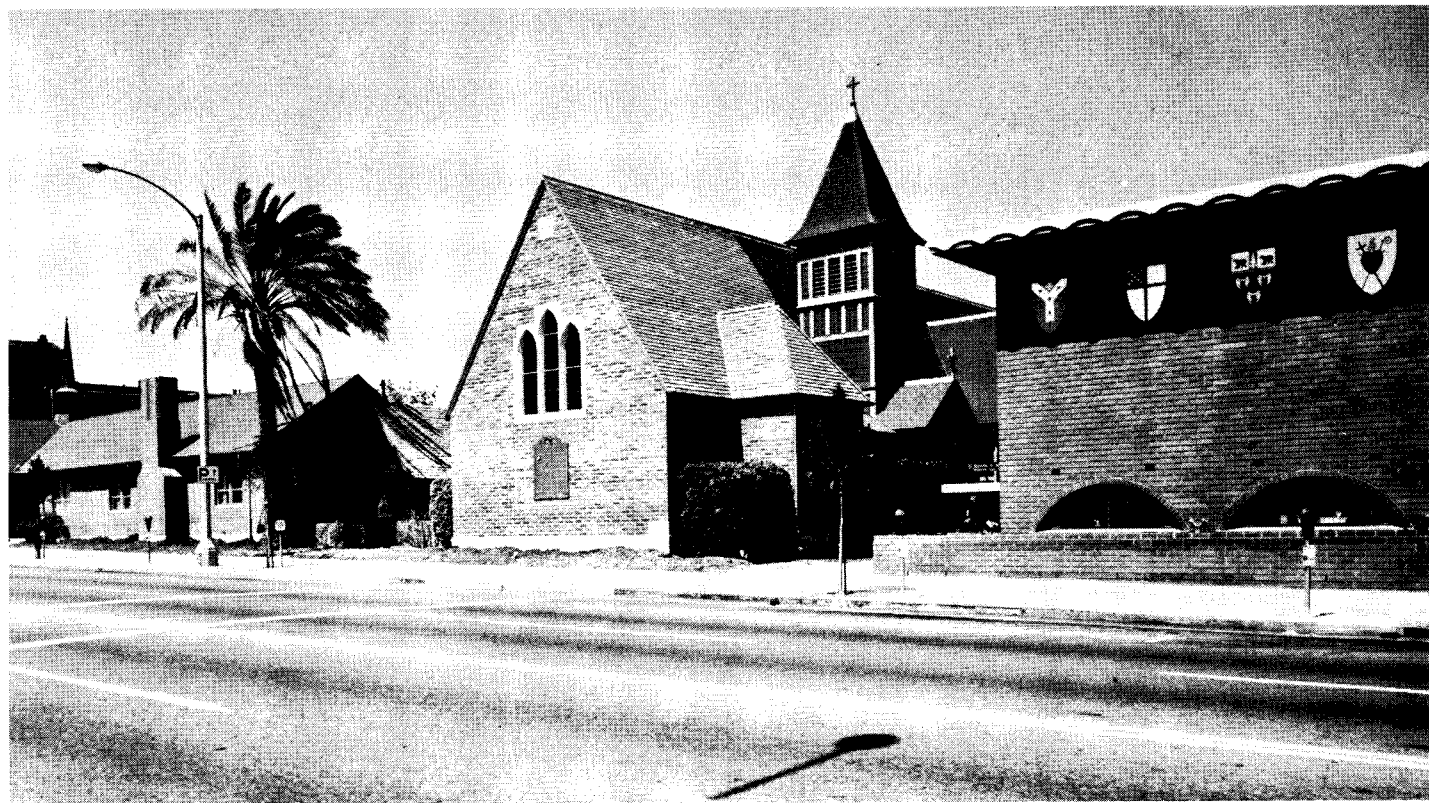
The ceiling of the Chapel is of open timber trusses, of solid fir, stained to harmonize with the open roof of the Church. The design is simple and vertical.

Adjoining the sanctuary is the sacristy, small but complete in every detail. The vestment and frontal case is of Bataan mahogany with convenient drawers and cupboards for stroing hangings, vessels, and linens. In one corner is the Sacrarium or Piscina with its shallow bowl of solid brass set in a ledge of marble and connected with the outside so that the waters for washing linens and cleaning a chalice or other vessels will not be disposed of in a common drain. (The window in the sacristy depicts the ancient Chalice of Antioch.)

As time goes on the brick walls of the Chapel will dry out and lose some of the lime efflorescence now see there, the timber work will take on the softness which aging only can give it, the tile floor will show a gleaming polish. It is hoped that objects of religious art will be added, and the writer sincerely believes that the Chapel of St. Ambrose will be a reverent and decent little temple in honour of our Lord and His disciple and doctor, Saint Ambrose of Milan.

Honour is due John Parr as master builder. His work has been skillful in its craftsmanship, all his assistants in masonry, painting, roofing and other branches of building and adorning have entered into the work with a wonderful spirit of cooperation and industry. The Bruner Tile and Marble Company took particular pains in selecting the stone for the altar, the various marbles used, and in the cutting, finishing and setting. The cornerstone in the exterior southwest corner is a genuine cornerstone, of enduring granite, with various documents hermetically sealed in its interior. It genuinely holds up the corner of the building and was cut locally by the Santa Monica Marble & Granite Company. Particularly does the writer wish to indicate the genial and erudite rector of St. Augustine-by-the-Sea Church (Father Pierson), who has entered into all the details of planning and building with enthusiasm, and keenness of judgment. The Chapel stands as a monument to his scholarliness and spiritual knowledge. To him and to the unknown donor who made this Chapel a possibility the writer expresses his thanks for the opportunity given him.

Humble as this addition to this old church may be in the eyes of the world, it equals in aspiration that of any great temple, and that this aspiration will be so received by our Lord is the hope and prayer of the architect.



**THE PARISH OF ST. AUGUSTINE-BY-THE-SEA**



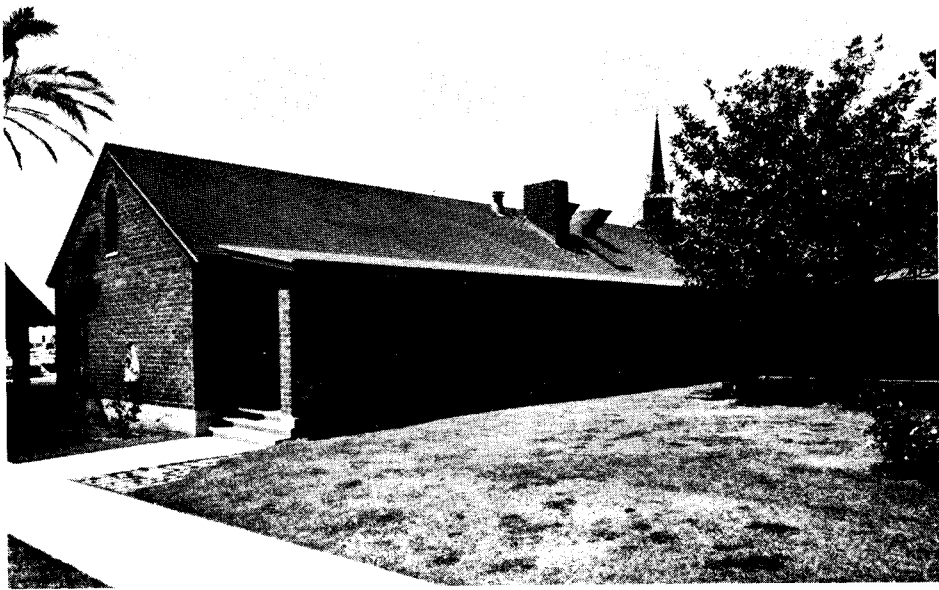
## A WALK AROUND OUTSIDE

As the visitor or worshiper leaves the interior of the Church of St. Augustine-by-the-Sea he should notice the handsome carved doors at the north and south entrances.

As you go out the south door you will see the Christian Education Building, erected in 1960-61. David L. Fowler was the architect, and created a structure which can be utilized by the Sunday School as well as the Parish Day School. It is of brick and concrete construction throughout, with outstanding lines. It contains seven large classrooms, lavatories on both floors, a utility room, offices and board room, as well as a library and teacher's lounge. The west front is adorned with mosaic shields depicting the allegiance of the parish to the Anglican Communion, to the Episcopal Church, to the Diocese of Los Angeles, and to St. Augustine of Hippo. Mr. and Mrs. Dale Owen of the parish family created the shields in their own studio. The garden is a recent addition, and provides a restful spot for visitors, passersby and students.

To the north of the Church are the other parish buildings. The Lytch Gate was moved in 1962 from the south side of the Church to provide a more suitable entryway to what had become the main entrance to the church itself. Persons often pause to rest in the shadow of the lovely old gateway. Through it come brides for their weddings, infants or adults for their Baptisms, hundreds each Sunday to make communion with their Lord, and the bodies of the faithful departed for Christian Burial. The patio is a haven amid the busy downtown. The Wayside Cross bids those who pass through the church grounds to remember the words: "Saviour of the world, Who by Thy Cross and Precious Blood hast redeemed us: Save us, and help us, we humbly beseech Thee, O Lord." It is a distinctive and unusual hand carved figure of the Crucified Christ the King from Italy, displayed in a redwood house.

The brick L-shaped structure was erected in 1951, and is a tribute to the rectorship of the Reverend Wallace N. Pierson. The Common Room is immediately beyond the Lytch Gate, and is used for meetings, large classes, some of the choir rehearsals, wedding receptions and other activities. It is a handsome room with leaded windows, and one stained glass window of the shield of the patron saint. It is to be hoped that it can increasingly become a center for arts



**THE CHURCH PATIO**



**THE WAYSIDE CROSS**

of a religious nature. A small kitchenette serves for small gatherings and parties. Further to the north in the same wing is a storage room, lavatory, printing room and Parish Library. (These last two rooms once served as Parish Secretary's and Rector's offices respectively.) Beyond are the offices of the parish, constructed in 1961 from two former classrooms. A youth room, music room, kitchen and lavatories complete this wing.

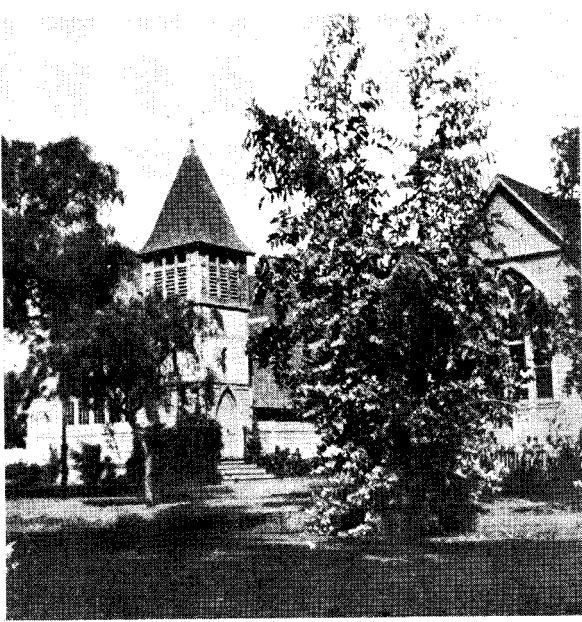
The large white building is the Parish Hall, erected in 1924 to replace a decaying building to the south of the parish church. This Parish Hall building contains the great hall with its stage, an altar guild workroom, an acolyte or server's room, a nursery for child care, the Memorial Guild Room, a cloak room, and a choir room which also serves as the study of the Pastoral Counselor. Before 1951 this last room served as the Parish Office. Into all these rooms of Pierson Hall and the Parish Hall was crowded the Day School before 1961. Upstairs in the Parish Hall is the projection room, a storeroom and the vestry and treasurer's rooms. The vestry rooms once served as an apartment for a single curate and sexton.

We are indeed blessed in the buildings that God has provided for our worship and activities. The tour is ended. It is hoped that before you leave the grounds you will return to the Church and pray for those who minister and worship in this place. We hope that you have enjoyed your visit as much as we have enjoyed having you share in the peaceful and inspiring atmosphere of the Church we love.

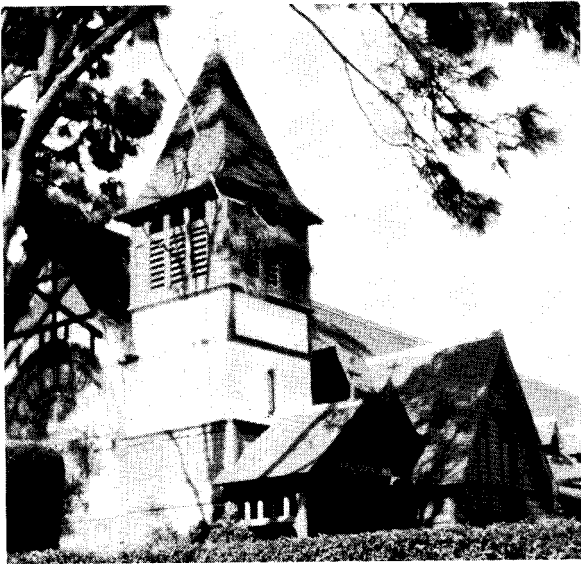
+++

"Hallowed this dwelling where the Lord abideth,  
This is none other than the gate of heaven;  
Strangers and pilgrims, seeking homes eternal,  
Pass through its portals."

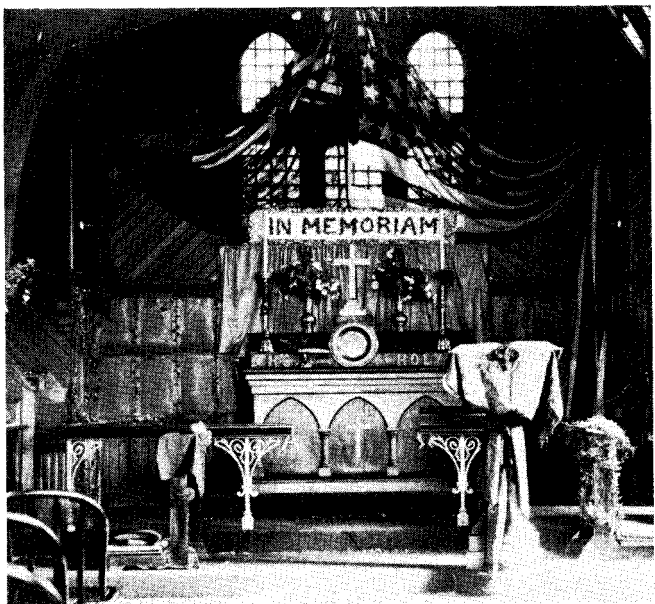
From Hymn 228 of  
"The Hymnal, 1940"



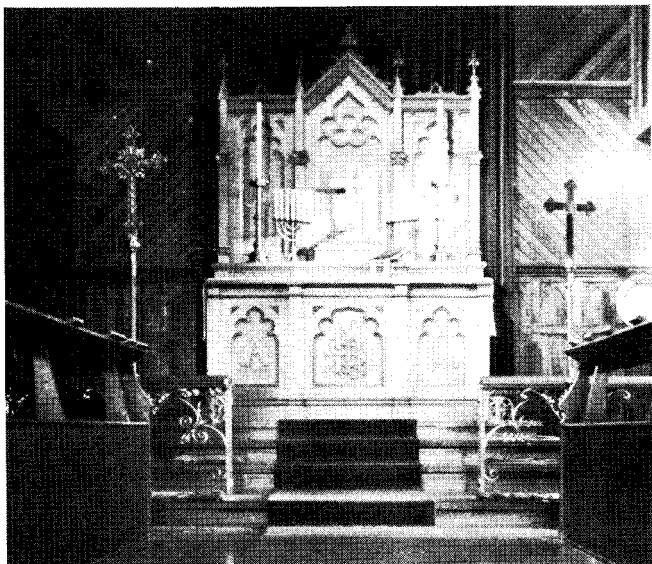
**ST. AUGUSTINE'S CHURCH and  
old PARISH HALL, about 1910**



**THE CHURCH, about 1930  
Hedge hides Holy Land Garden**



THE ALTAR and SANCTUARY in 1901,  
decked for Memorial Service for Queen Victoria.



THE ALTAR and CHANCEL  
from about 1921 to 1960.



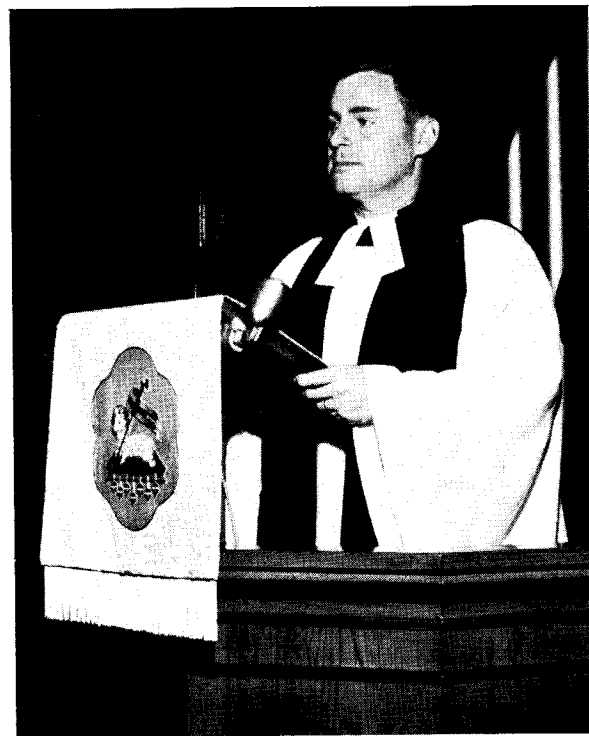
THE CHURCH in EPIPHANY, 1962

## CHRONOLOGY

- 1875-76 First Episcopal Church services in Santa Monica.
- 1885 Regular services conducted in a Hall on Third Street by the Reverend Duncan F. Mackenzie.
- 1886 The Reverend Henry Scott Jefferys appointed the priest-in-charge of the Santa Monica Mission.
- 1887 The Church of St. Augustine-by-the-Sea erected.
- 1888 The Reverend Orrin Judd appointed Vicar.
- 1891 The Reverend Ivan Merlin-Jones named as Rector.
- 1894 First Parish Hall built (to south of Church).
- 1898 The Reverend E. W. Meaney appointed as priest-in-charge of the congregation.
- 1900 The Reverend Canon John D. H. Browne instituted as Rector.
- 1902 First enlarging of the Church.
- 1903 Parochial Mission established in Ocean Park (now Good Shepherd Church, Venice).
- 1906 Parochial Mission established in Sawtelle, West Los Angeles (now St. John's Diocesan Mission on Santa Monica Boulevard).
- 1912 Second enlarging of Church; installation of Pipe Organ.
- 1915 The Reverend Wallace N. Pierson named as Rector.
- 1920-22 Parish acquired two lots to the north of Church.
- 1925 New Parish Hall completed.
- 1941 St. Ambrose Chapel erected.
- 1951 The Reverend Clifford E. Barry Nobes named Rector.



**THE REVEREND CLIFFORD E. BARRY NOBES**  
Rector, 1951-1958.



**THE REVEREND ROBERT CLAFLIN RUSACK**  
Rector, 1958 -



## CHRONOLOGY (Continued)

- 1951 Rectory on Tenth Street purchased.
- 1954-58 Parish acquired two lots on Fifth Street.
- 1952 Pierson Hall, three classrooms, kitchen erected.
- 1954 Parish Day School established.
- 1956 Parochial Mission established in Malibu, known as St. Aidan's Chapel.
- 1958 The Reverend Robert C. Rusack instituted as Rector.
- 1959 Curate's Residence on Amherst Avenue purchased.
- 1961 Christian Education Building erected.
- 1961 St. Aidan's Chapel and Educational Building dedicated in Malibu.



THE CHURCH about 1900

## A LIST OF GIFTS

The donors of some gifts are not known. If anyone reading this can enlighten the rector about certain gifts, he would be most grateful. These could then be recorded in future editions of **THE EBB AND FLOW**.

### THE HIGH ALTAR and SANCTUARY

#### **THE DOSSAL CURTAINS**

Red silk and tapestry Dossal and Riddel Curtains  
Donor, the bequest of Margaret Hutchinson in  
memory of her mother. 1960

Lenten Dossal and Riddel Curtains  
From Baptismal Thankofferings received by the  
rector. 1960

#### **THE ALTAR and RIDDEL POSTS**

From the bequest of Margaret Hutchinson 1960

#### **THE RIDDEL POST ANGELS**

Two - In memory of Olive M. Storrs  
Donors, her children. 1961

One - In memory of Mary Perry  
Donors, her daughter and friends. 1961

One - In memory of Frederick Broughton  
Donors, his mother, wife and children 1961

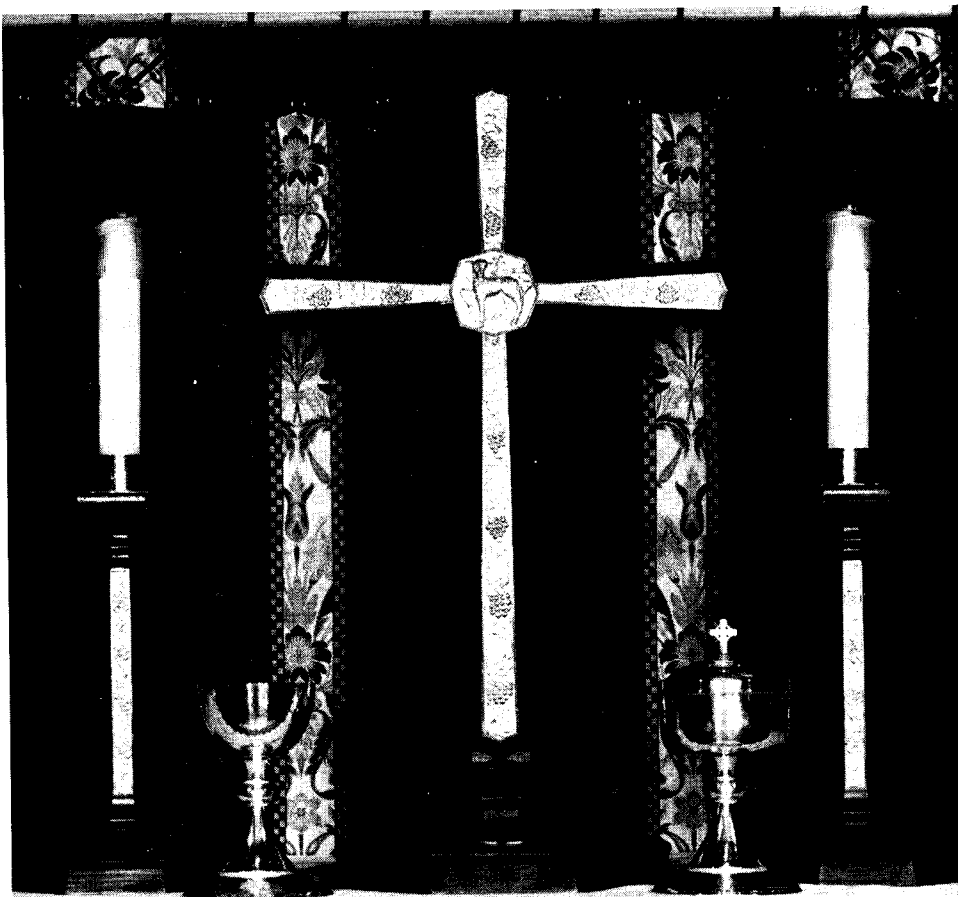
#### **THE FRONTALS**

Red Silk and Tapestry Frontal  
From the bequest of Margaret Hutchinson 1960

Lenten Frontal  
From Baptismal Thankofferings received by the  
rector. 1960

Passiontide Frontal  
From offerings received by the rector at Burial  
Services for non-parishioners. 1961

Festival White Frontal with Shields  
In memory of Cecelia Bigger, Julia Cochrane, Ethel  
Humphrey, Olive Marshall, Louise Doty Nevin,  
Ione M. Overfield and Emma Pearson. 1962



THE HIGH ALTAR CROSS and CANDLESTICKS

Handmade in England, 1960-61.

THE CHALICE and CIBORIUM

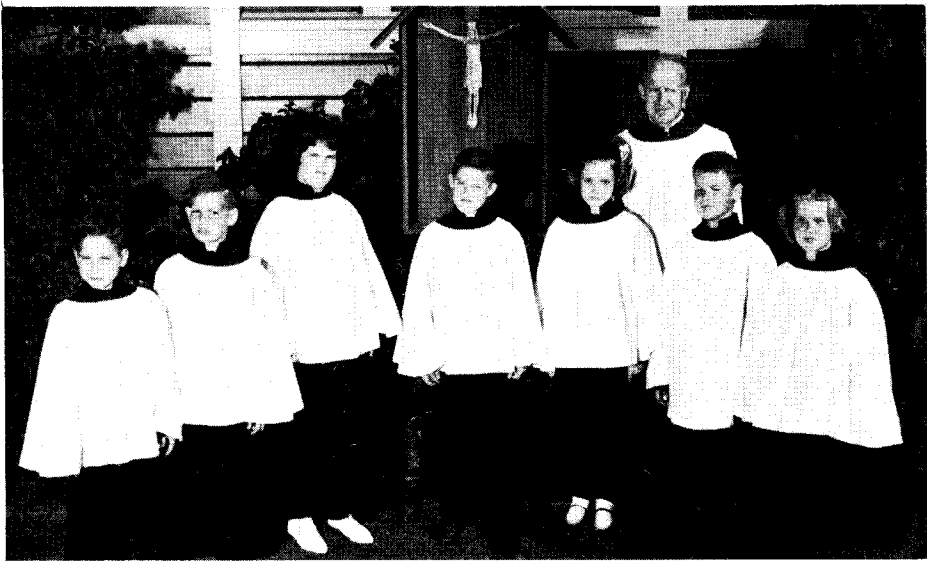
Handbeaten silver - gifts at Christmas, 1958.

- THE KNEELING CUSHIONS - Needlepoint**  
 Donor, the Altar Guild  
 Made by Mrs. D. Rexford Abbott, Mrs. John A. Bangs,  
 Mrs. Joseph Scheitler, Mrs. Hubert A. Ward 1962
- THE CUSHION for the BISHOP'S CHAIR**  
 Donor, the Altar Guild  
 Made by Mrs. Jack D. Myers 1962
- THE ALTAR CROSS**  
 In memory of MacGregor Stark Card and  
 Benjamin Franklin Stickley Card  
 Donors, Mrs. M. S. Card and family. 1960
- THE ALTAR CANDLESTICKS**  
 In memory of Willard Joseph and Harriett Rathbun  
 Claflin  
 Henry Alfred and Alice Watson Rusack  
 Donor, their grandson 1960
- THE ALTAR SERVICE BOOK CUSHIONS**  
 A Thank Offering 1960
- THE ALTAR SERVICE BOOK**  
 In memory of Jessie L. Saunders  
 Donors, family and friends 1956
- THE ORIENTAL RUG**  
 Donors, Mr. and Mrs. Shelmerdine Perkins 1961
- THE CREDENCE SHELF**  
 In memory of Ethel Pierson  
 Donor, the Altar Guild 1936
- THE BISHOP'S CHAIR**  
 In memory of Mary Louisa Dudley  
 Donors, Mr. and Mrs. Percy J. Dudley 1905
- THE ACOLYTE STOOLS**  
 From Baptismal Thankofferings received by the  
 rector. 1961
- THE PRAYER DESKS**  
 One - In memory of Frederick Theodore Pierson  
 One - In memory of Charles Elliott Holstein 1930



THE CHANCEL CHOIR, Easter Even, 1962.

THE PARISH HALL ALTAR (in the Church 1921-60) In memory of Edmund Gillett Smith Donors, members of his family	1921
THE PARISH HALL ALTAR CANDLESTICKS In memory of Donald Walter Wood Donors, his parents and sisters	1956
THE BRASS CANDELABRA In memory of V. E. G. S.	1891
THE BRASS ALTAR DESK	1891
THE BRASS VASES (Round) In memory of Katherine Davenport Treichel	1888
THE BRASS VASES (Square) Donor, the Confirmation Class	1957
THE WROUGHT IRON FLOWER HOLDERS Donor, the Altar Guild	1962
ALABASTER FLOOR VASES Donor, Mrs. Elsie Jacobs	1959
THE PASCHAL CANDLESTICK In memory of Lynn Brackett Donor, Mrs. Jack D. Myers	1959
THE CHRISTMAS CRECHE FIGURES Donors, the children of the Sunday School (Restored in 1961 by Mrs. Meri Lechner)	1930
THE EASTER GARDEN FIGURES Donors, Rebecca and Geoffrey Rusack Tomb and Garden created by Mrs. C. Page Smith	1962
FUNERAL or BIER CANDLESTICKS Donor, the Altar Guild	1956
FRONTAL CASE, STOLE CASE and SACRISTY REDECORATION Donor, the Altar Guild	1961-62
THE PROCESSIONAL TORCHES Two - In memory of Floyd Repp	1958
Two - In memory of Donald Walter Wood	1959



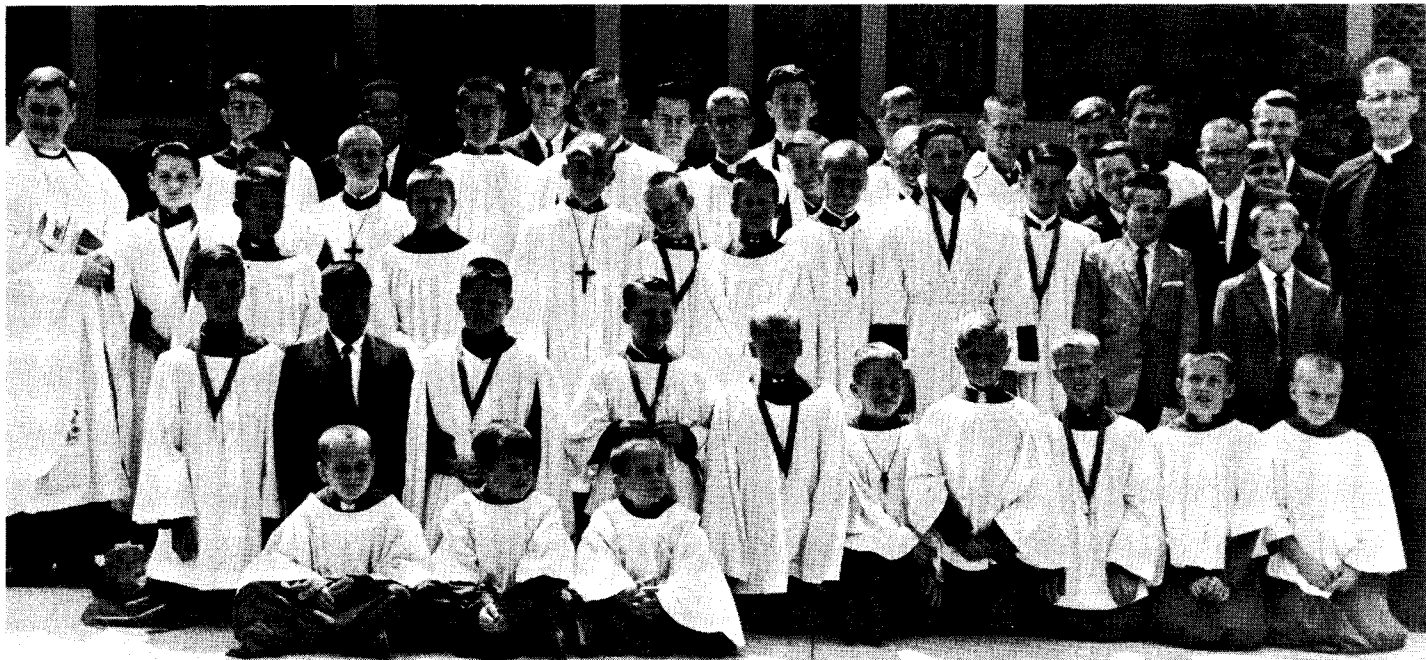
**SOME OF THE CUB CHOIR, EASTER 1962.**



**SOME OF THE MEMBERS OF ST CECILIA and  
ST. AMBROSE CHOIRS  
Easter, 1962.**

<b>THE PROCESSIONAL CROSSES</b>	
<b>LARGE SILVER CROSS</b>	
Memorial inscription illegible	1887
<b>SMALL SILVER CROSS</b>	
In memory of Horace Melville Dudley Donor, the Percy J. Dudley family.	1914
<b>LENTEN CROSS</b>	
A Baptismal Thankoffering.	1960
<b>THE FLAGS</b>	
<b>Outdoor Poles and Flags</b>	
Donors, Mr. and Mrs. Earl Kniepkamp Mrs. Emma Oliver	1962
<b>United States Flag at rear of Nave</b>	
In memory of Colonel Burton Fleet Donors, Mr. and Mrs. Robert A. Fleet	1961
<b>Episcopal Church Flag at rear of Nave</b>	
Donor, the rectory family.	1961
<b>Processional Flags for Junior Service</b>	
Donors, Dr. and Mrs. James Follette.	1961
<b>Parish Hall United States Flag</b>	
In memory of Vaughn Verdi Donors, his wife and son.	1961
<b>THE RECEIVING BASONS</b>	
<b>SILVER BASON</b>	
In memory of Katherine Davenport Treichel Donor, Clement Biddle Barclay II	1888
<b>BRASS UNITED THANK OFFERING BASON</b>	
Donor, Mary E. Drake	1924
<b>THE VERGER'S MACE and GOWN</b>	
Donor, Mrs. Edith LeBreton	1960
<b>THE WARDEN'S STAFF</b>	
A Baptismal Thankoffering	1962
<b>THE PALL</b>	
Donor, the Altar Guild	1953





**MOST OF THE MEMBERS OF THE SERVER'S GUILD**  
Easteride, 1962

(Doug Dale Photo)

## THE STAINED GLASS WINDOWS

### High Altar Window

In memory of Francis Hill Parker Parr and  
Mary Parr

Donors, their children 1960

### Outer Sacristy Windows

One - In memory of Hugh Livingstone MacNeil 1901

One - In memory of Jonathon Sayre Slauson and  
Sarah R. Slauson 1920

### Inner Sacristy Windows

St. Ambrose Window - In memory of the Reverend  
Daniel Joseph Gallagher

St. Monica Window - In memory of Caroline Pierson  
Donor, Father Pierson 1935

### Chapel Sacristy Window

In honour of Father Pierson 1941

### Chancel Windows

St. Luke and St. Matthew Windows  
Donor, St. Margaret's Guild 1938

St. John Window  
In memory of Sarah Smith Stanwood 1938

St. Mark Window  
Donor, Mrs. Sybil Willis Lane 1938

### Nave Windows

St. Monica Window  
In memory of Ellen D. Greppo  
Donor, her daughter 1936

St. Augustine of Canterbury Window  
In memory of Kate Travis Hutton  
Donor, the P. G. Winnett family 1936

St. John the Evangelist Window  
In memory of T. Erskine Mathews 1936

## Nave Windows (Continued)

### St. Peter Window

In memory of the Reverend Canon John D. H.  
Browne and Tryphema M. Browne 1936

### St. Helena Window

In memory of L. Evelyn Mathews 1936

### St. Augustine of Hippo Window

In memory of Lydia Roe Winnett 1936

### St. Mary the Virgin Window

In memory of Janet W. Morgan  
Donors, members of her family 1936

### St. Paul Window

In memory of John W. Mahood  
Donors, his wife and children 1936

### The Infancy or Nativity Window

East Lancet - In memory of F. H. P. Parr

Central Lancet - In memory of members of the  
Hunt and Fitss families

West Lancet - In memory of Frederick Pierson 1941

### The Resurrection Window

Donor, Florence Elizabeth Dodge 1941

### The Creation and Redemption Windows

In memory of Grant Leslie 1944

### St. Andrew Window (Over South Portal)

In memory of Harold H. Heimbeck 1951

### Symbol Windows (Over South Portal)

In memory of John C. and Sarah S. Stanwood 1942

## Chapel Windows

### Altar Window and Bishop's Window

Donor, the P. G. Winnett Family 1941

### Baptistry Window

In memory of Amanda Follett Spencer  
Donor, St. Helena's Guild 1952

### Common Room St. Augustine Window

Donor, Mrs. Nancy J. Herdman 1952



PART OF THE CHURCH SUNDAY SCHOOL STAFF, 1962

(Doug Dale Photo)

## THE BAPTISTRY FURNISHINGS

### The Font

In memory of Katherine Davenport Treichel  
Donor, St. Luke's Church, Germantown, Philadelphia, Pennsylvania.

1888

### Candle Stands

Donors, Mr. and Mrs. Alfred Kegeris

1955

### Candlesticks

Once used on old High Altar

1888

### Lamp of Venetian Glass

Donors, Mr. and Mrs. Brandon O'Hildebrandt

1962

### Statue of Virgin and Child

Donor, Mrs. Elsie Jacobs

1960

## THE CHAPEL ORNAMENTS and FURNISHINGS

### CHRIST THE KING CRUCIFIX

In memory of Constance Keating Sully  
Donors, her husband and friends

1962

## THE DOSSALS

### Festival Dossal of Silk and Tapestry

Donors, Mr. and Mrs. Earl Kniepkamp  
Mrs. Emma Oliver

1959

### Lenten Dossal

From Baptismal Offerings received by the  
rector.

1960

## WROUGHT IRON CROSS and CANDLESTICKS

Donors, Mr. and Mrs. Earl Kniepkamp  
Mrs. Emma Oliver

1960

## CHAPEL ALTAR FRONTALS and FRONTLETS

### Tapestry and Red Silk Frontal

Donor, Mrs. Richard Humphrey

1959

### Green Frontlet with Shields

Donor, the Rectory family

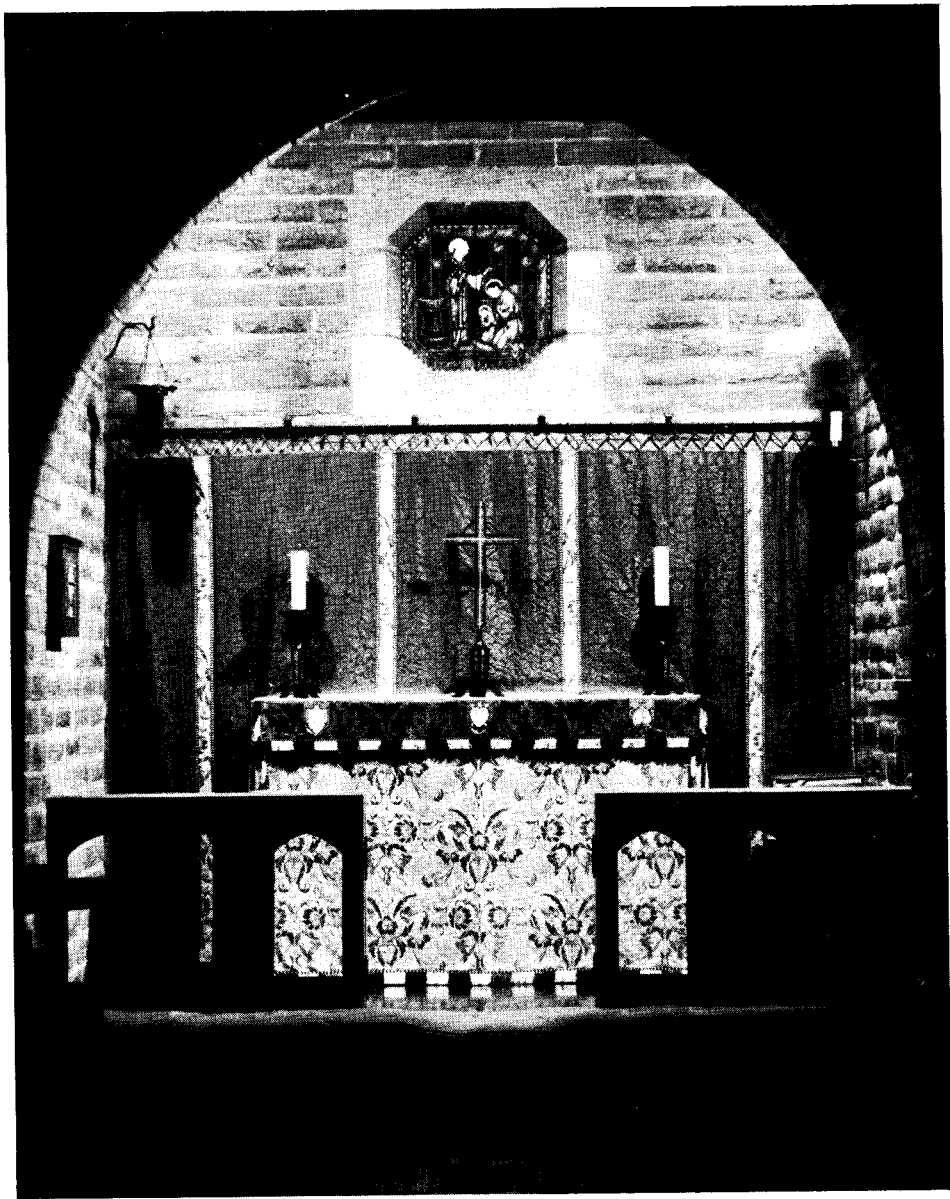
1961

### Yellow Frontlet

A Baptismal Thankoffering

1961

<b>CHAPEL ALTAR FRONTS and FRONTLETS (Continued)</b>	
<b>Blue Frontal</b>	
A thankoffering for ten years in the sacred ministry.	1961
<b>Lenten Frontal</b>	
From Baptismal offerings received by the rector.	1960
<b>Passiontide Frontal</b>	
From offerings received by the rector at funerals conducted for non-parishioners.	1961
<b>ALTAR CUSHIONS</b>	
<b>Festival Silk Cushion</b>	
In memory of Henry Hean Daniels, a Bishop	1959
<b>Lenten Cushion</b>	
Donors, Mr. and Mrs. Louis A. Casella	1960
<b>CLERGY SEAT</b>	
In memory of Ethel Rose Pierson	
Donor, the Server's Guild	1939
<b>PRAYER DESK</b>	
In memory of Elmira Elizabeth Jones Judah	1905
<b>KNEELING DESKS</b>	
From offerings received by the rector at funerals conducted for non-parishioners.	1961
<b>ALTAR SERVICE BOOK</b>	
In memory of Amy Mouncey Ranyard	
Donors, Mr. and Mrs. Shelmerdine Perkins	1958
<b>AMBRY CIBORIUM</b>	
Donors, Charles and Roberta Milsom	1956
<b>PRAYER BOOK-BIBLE</b>	
A Baptismal Thankoffering from the Hancock Banning III family.	1959
<b>HOLY WATER FONTS</b>	
Donors, Mr. and Mrs. Orrin Hubbell	1962



ST. AMBROSE CHAPEL - EPIPHANY 1962

**THE CHAPEL ORNAMENTS (Continued)****THE SILVER****Chalice and Paten**

Donor, the Altar Guild

1925

**Lavabo Bowl**

In memory of members of the Pierson family

1945

**Bread Box**

In memory of Evington Foote Scharling

Donors, his friends

1959

**Cruets**

In memory of Caroline E. Pierson

Donor, Father Pierson

1939

**Hand-painted Tray**

Donor, Miss Elizabeth Hostetter

1959

**Baptismal Bowl**

In memory of Diana Basken

Donors, Daniel and Dorothy Shackman

1960

**Baptismal Shell**

A Baptismal Thankoffering

1960

**THE NAVE FURNISHINGS****Magazine Rack and Alms Box**

1961

**PEWS, PRAYER BOOKS and HYMNALS**

Many donors through the years.

**THE PULPIT**

In memory of John H. Crawford, M.D.

1904

**THE LECTERN**

In memory of Matilda Cushman Brooks

1897

**THE ROOD BEAM**

The bequest of Marjorie Waterman Smith

1936

**THE HYMN BOARDS**

In memory of Ethel Ross Pierson

Donor, St. Margaret's Guild

1935





THE EASTER GARDEN - 1962

**THE CHANCEL**

The Organ

In memory of Dr. A. P. Williamson

1905

**Choir Stalls**One - In memory of Alfred William Morgan and  
Geoffrey Francis Morgan.

1953

One - In memory of Francis J. Perry  
Donors, his wife and daughter.

1955

One - In memory of Milo Emerson Armitage  
Donors, his family and friends.

1955

One - In memory of Richard Wright Austin and  
Jane Naye Austin

Donor, William J. Austin

1956

One - In memory of Ronald Ranyard  
Donors, his family and freinds

1958

**Prayer Desk**

In memory of Josephine O'Neill

1940

**Prayer Book-Hymnals**

Two - Spring Confirmation Class

1960

One - The DeShazo family

1960

One - The Confirmation Class

1952

**Pew Front Shields**

A Baptismal Thankoffering

1959

**THE HANGING LIGHTS in the Church**

Donor, George Holstein

1935

**ELECTRICAL and SOUND EQUIPMENT**Large amounts over several years for the Church  
and Parish Hall

Donor, Frederick M. Armitage

**THE SACRISTY ORIENTAL RUGS**

Donors, Mrs. Joseph Scheitler

Mr. and Mrs. Shelmerdine Perkins

1962

**THE SACRISTY VESTMENT and LINEN CASE**

Donor, the Altar Guild

1935

**LINENS and SURPLICES, ALBES and AMICES**

Donor, the Altar Guild and the Rector

1959



THE EDUCATION BUILDING - DEDICATED 1961

**THE CHURCH SILVER VESSELS****CIBORIUM**

Donor, St. Helena's Guild Christmas, 1958

**CHALICE**

In memory of Mary L. Hampton  
 Donors, Mr. and Mrs. Mervin F. Foster Christmas, 1958

**PATEN**

In memory of Jane Marriner  
 Donor, Mrs. Elsie Jacobs Christmas, 1958

**LAVABO BOWL**

In memory of Percy Minshall  
 Donor, Mrs. Louis A. Casella 1960

**SILVER BREAD BOX (Large)**

In memory of the Reverend Herbert E. Bowers, D.D. 1910

**SILVER BREAD BOX (Small)**

Donor, Father Pierson 1941

**CRUETS**

One - In memory of Mary A. Fitts  
 Donor, Mrs. Esther Fitts 1949  
 One - A thankoffering of Alfred and Marie Kegerris 1949

**CRYSTAL and SILVER FLAGON**

In memory of the Reverend George Robinson and  
 Elizabeth Ann Robinson 1953

**SMALL CHALICE and PATEN**

In memory of John and Emma Menn  
 Peter and Lydia Schaufel  
 Donors, Robert and Pearl Menn 1956

**SILVER VASES**

In memory of Katherine Mary Matthew 1898

**PRIVATE COMMUNION SETS**

One - A thankoffering for the birth of Joellyn  
 Van Buskirk and Walter Van Buskirk III 1955  
 One - Donor, Father Dexter 1946  
 Two Crystal and Silver Cruets  
 Donors, Father Hartung and Father Rusack



THE CLERGY AND SERVERS at the DEDICATION of the NEW  
CHRISTIAN EDUCATION BUILDING - 1961. (Cliff Hunt Photo)

## THE VESTMENTS

(Chasuble, Stole, Maniple, Burse and Veil, and in some instances the Pulpit and Lectern hangings.)

WHITE SET - The gift of parishioners.	1958
BLACK SET - In memory of Mabel Perkins Donors, her family and friends	1958
GREEN SET - The Rectory Family and Mr. and Mrs. J. Herbert Carson	1960
BLUE SET - The gift of parishioners.	1958
YELLOW SET - Several Baptismal Thankofferings.	1961
RED SET - Mrs. Richard Humphrey	1957
LENTEN SET - Funeral Offerings received by rector.	1960
PASSION RED SET - Funeral Offerings received by the rector from non-parishioners.	1960

## THE COPEs

Tapestry and Red Silk Donors, Mr. and Mrs. H. Glyne Martin	1959
Lent and Passiontide Copes From offerings received by the rector at funerals conducted for non-parishioners.	1961

## A BLACK CAPE

Donor, Admiral Norman F. Garton, USNRet'd.	1960
--	------

## THE EDUCATIONAL BUILDING

### MOSAIC SHIELDS

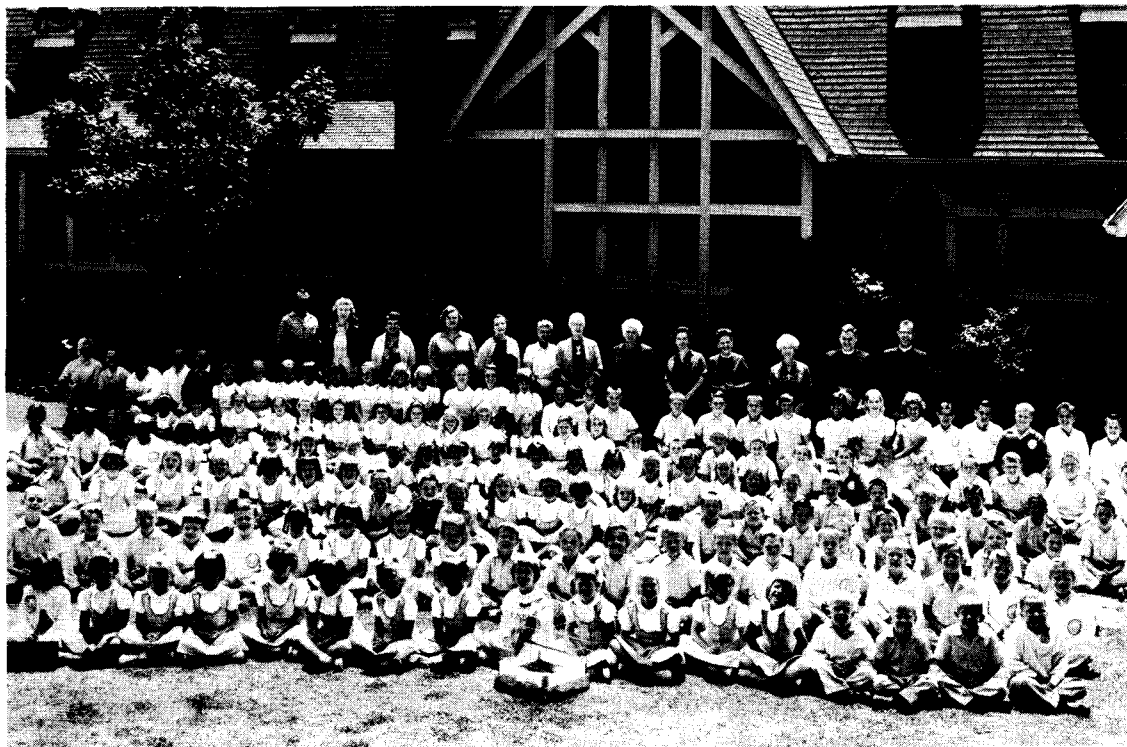
In memory of Jennie Yeaton Donors, members of her family Created by Elaine and Dale Owen	1961
--	------

### PATIO

Donors, Women of the Church through Thrift Shop	1962
---	------

### PATIO BENCHES

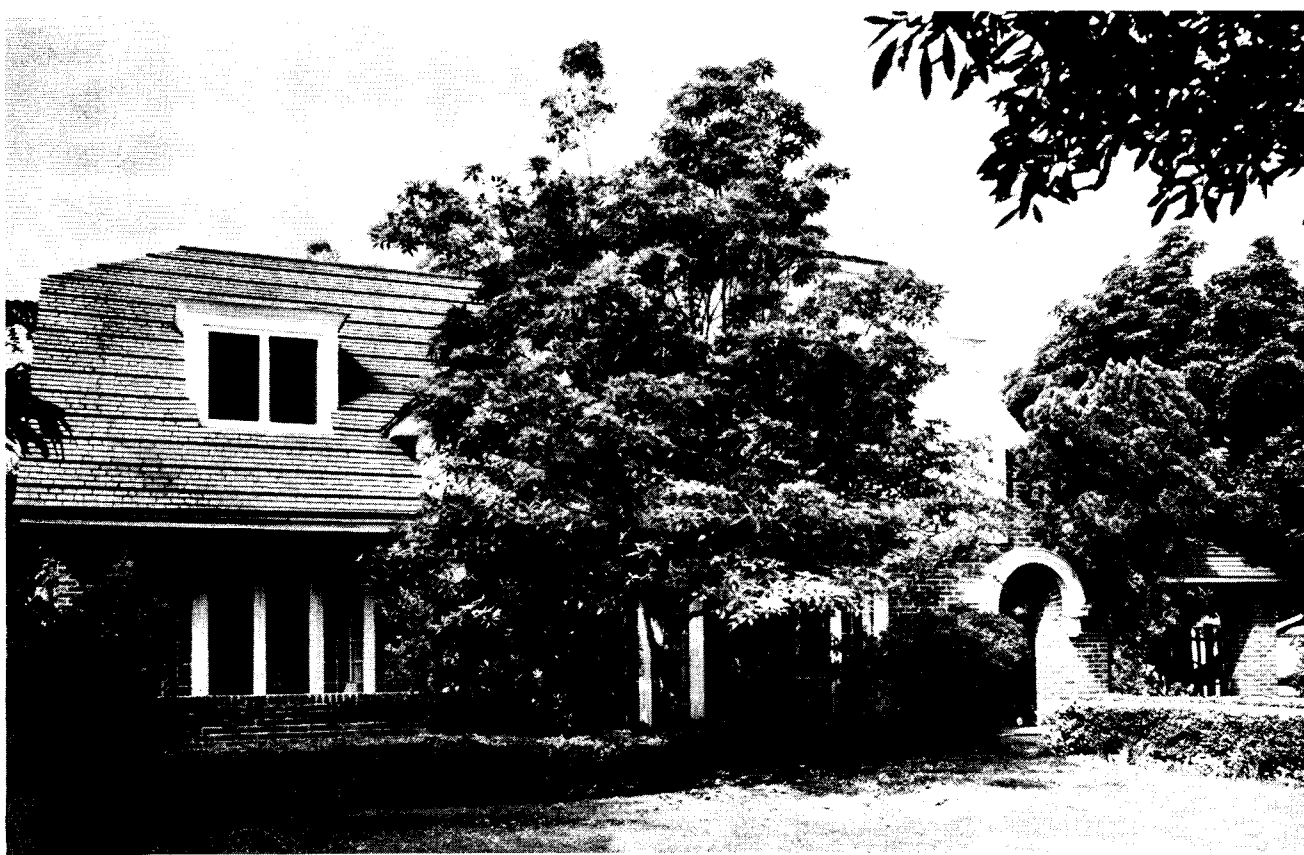
Donor, St. Margaret's Guild	1962
-----------------------------	------



THE DAY SCHOOL FACULTY and STUDENT BODY - 1962

<b>THE CHURCH PATIO</b>	
<b>LYTCH GATE, NORTH PORCH and CARVED CHURCH DOORS</b>	
Donor, George Holstein	1933
(Lytch Gate moved to its present location by Women of the Church, 1962)	
<b>STATUARY on Pierson Hall</b>	
Donors, Mr. and Mrs. S. Davidson Lamon	
Mr. and Mrs. Shelmerdine Perkins	1961
<b>PATIO WALL and IRON GATES</b>	
Donor, Mrs. Esther Fitts	1958
<b>PATIO GARDEN and MAGNOLIA TREE</b>	
In memory of loved ones	
Donors, Mrs. Jennie Yeaton	
Rex and Jennie Abbott	
Hubert and Rose Ward	1953
<b>WAYSIDE CROSS</b>	
Baptismal Thankoffering of Emrich Nicholsons	1959
<b>PATIO EVERGREEN TREES</b>	
Donors, the Armitage family and friends	1956
Mr. and Mrs. Louis A. Casella	1959
Mr. Milford Poss of the Berkeley Florist	1960
<b>TREES along FOURTH STREET</b>	
One - In memory of Alfred W. and Janet M. Morgan	
Elliott H. and Isabella W. Grasett	
Donors, Mr. and Mrs. Laurence W. Morgan	1962
One - In memory of Mrs. Claude Greppo and	
Miss Ellen Greppo	
Donors, Janet and Elliott Morgan	1962
One - In memory of Hugh and Muriel Evans	
Donors, their children and other family	1962
One - In memory of Ronald Ranyard	
Donors, Mr. and Mrs. Shelmerdine Perkins	1962
<b>PLAYGROUND FENCE</b>	
In memory of Scott Hauser	
Donors, his wife and children	1959





THE RECTORY - 342 TENTH STREET, SANTA MONICA

## PIERSON HALL

Leaded Windows  
Donor, St. Margaret's Guild 1952

Crucifix  
Donor, Mrs. Richard Humphrey 1959

Glass Exhibition Case  
In memory of Edgar H. and Marion Foukes

St. Nicholas  
Donor, Mrs. Margaret Mitchell 1959

Fireplace  
In memory of Clair E. Woodbury  
Donor, Helen A. Woodbury 1952

Library (formerly Rector's Study)  
In memory of Clifford Harry Cole  
Donor, his mother 1952

Fountain  
In memory of Nelson D. and Lavinia G. Miller  
Donors, Mr. and Mrs. Wm. McDonald Miller 1953

Steeple  
In memory of Charles Edgar and Ida Virginia Dickinson  
Donor, Mrs. Richard Humphrey 1952

## PARISH OFFICES (Redecorated 1961)

Mail Box  
Donor, St. Margaret's Guild 1962

Tract Case and Bulletin Board  
From offerings received by the rector at Burial  
Services conducted for non-parishioners 1961

PAINTINGS of Malibu and Ocean Park Piers  
In memory of Emma Pearson (The artist)  
Donors, her son and daughter 1961

Book Cases in Rector's Study  
In memory of Annie Laurie Roberts  
Donor, Maude Roberts Cox 1961



THE CURATÉ'S RESIDENCE - 2577 AMHERST AVENUE, WEST LOS ANGELES

**LEADED WINDOWS, FURNISHINGS and KITCHEN EQUIPMENT** for Pierson Hall, the Parish Hall, and the Education Building given by many individuals and groups in the parish. They are too numerous to mention, but the parish family is ever grateful for gifts of art and fine furnishings for the Church's schools and rooms.

**ENDOWMENT FUNDS**

- A - Donor, Mr. George Holstein  
Purpose: For the replacement of Church or Parish Hall in an emergency. 1934
- B - Bequest in the name of Marjorie Waterman Smith  
Purpose: Replacement of Parish Buildings. 1936
- C - Henshey Family Legacy 1961

**SCHOLARSHIP FUNDS**

Parish Day School Scholarship Fund  
Established by gifts from several individuals to aid in tuition for Parish children. 1956

Rector's Scholarship Fund  
Established by gifts to rector to be used for deserving Day School children. 1960

Robert Wadsworth Memorial Scholarship Fund  
Established by memorial gifts of friends and family of this boy to aid needy Day School children. 1961

Theological Education Scholarship Fund  
To aid men of the parish studying for Holy Orders 1951

**MUSIC FUND**

Established by the legacy of Edith Bond for the maintenance of the organ and music improvement. 1949

**ADDITIONAL GIFTS** may be made to any of these funds at any time and are tax exempt.

## THE TASK AHEAD

As we observe this 75th anniversary of our Parish Church, many will want to think and plan ahead to do for future generations that which has been done for us.

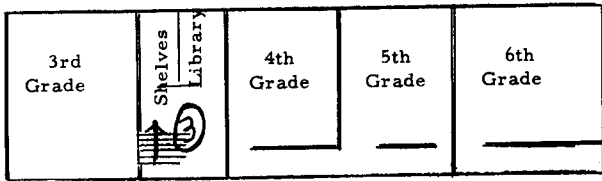
On page 320 of the Prayer Book there is a rubric which reads: "The Minister is ordered, from time to time, to advise the people, whilst they are in health, to make Wills arranging for the disposal of their temporal goods, and, when of ability, to leave bequests for religious and charitable purposes."

The maintenance of St. Augustine-by-the-Sea Church, with its school and parochial mission, is such a religious use. You may specify the purpose for which your gift is to be used, but it is desirable to allow some leeway so that if the purpose cannot be fulfilled the Rector, Wardens and Vestrymen may use discretion in putting the gift to work.

The Parish Church of St. Augustine-by-the-Sea is a non-profit religious corporation under the laws of the State of California. All gifts are exempt from Federal and State taxes. Gifts may be made while a person is living, and so he or she can share in the joy of giving. A person should consult an attorney and find the best way to leave funds to the Church. Property may also be left to the Church, allowing the vestry to sell the property if necessary.

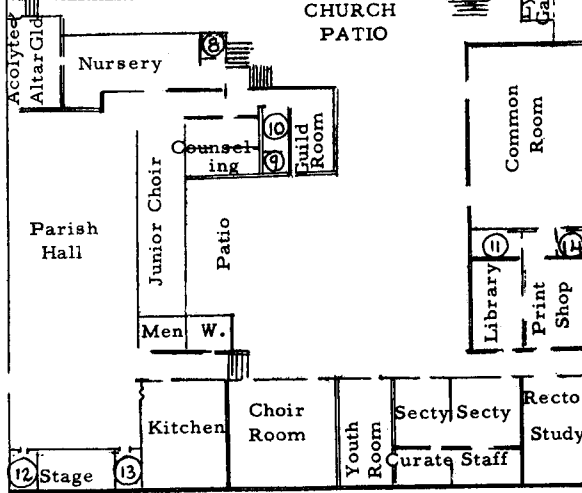
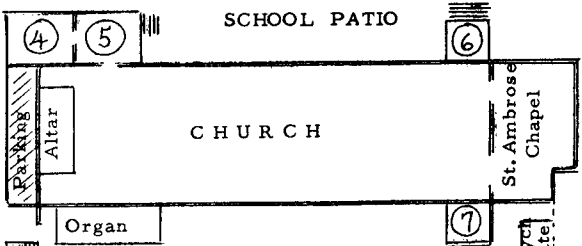
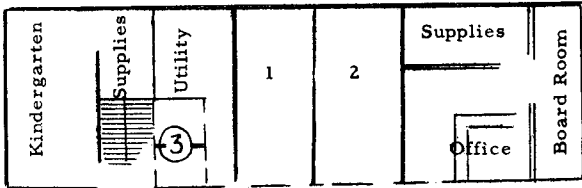
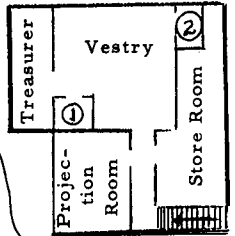
One of the great needs today is the rebuilding and enlarging of the Organ. Organ experts have told us that it is now altogether foolish to undertake stop-gap repairs. Extensive rebuilding must take place. A gift to provide for this would be a most glorious memorial to a loved one. A bequest to provide for this would be gratefully received by generations of worshipers at St. Augustine's Church.

One of the attorneys who belong to the parish will be glad to confer with persons about Wills that would remember the Parish, or the rector would be glad to speak with persons about gifts which would enhance or worship, the work of our Sunday and Day Schools, our missionary outreach, or any other work which Christ's Church should be doing in mid-twentieth century.



Upper Floor - Education Building

Rooms over Parish House



FOURTH STREET

FIRST FLOOR

- INDEX
1. File Room
  2. Wash Room
  3. Lavatories
  4. Priest's Sacristy
  5. Outer Sacristy
  6. Entrance
  7. Entrance
  - 8-9. Lavatories
  10. Coat Room
  11. Kitchenette
  12. Scouts
  13. Storage
  14. Store Room-Supplies

FLOOR PLAN OF THE PARISH