

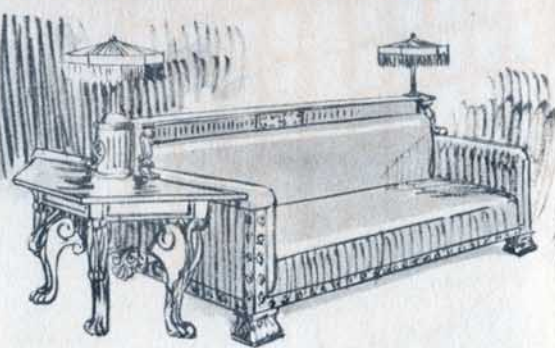
LOS ANGELES  
NEW HOTEL  
ROSSLYN  
AND ANNEX



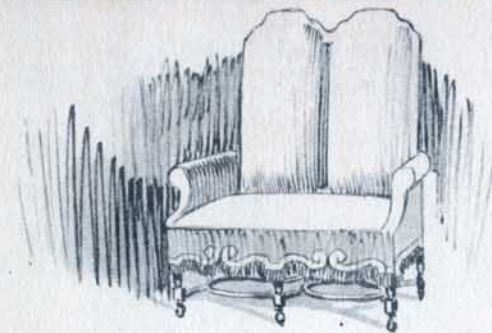




THE New Hotel Rosslyn and Annex have achieved an international reputation for homelike, restful comfort. The Rosslyn has always been operated as a popular priced hotel and may be regarded as one of the great outstanding hotel successes of the West. Under the personal management of George A. and Dwight H. Hart, proprietors and well-known hotel men.



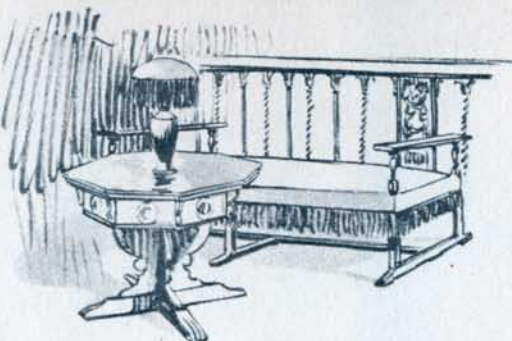
THE great hotels are identical in design, and though they rise thirteen stories upward on opposite corners, the 145-foot subway makes them one. Throughout the twin buildings only the latest ideas in hotel construction have been utilized. Both structures are fire-proof and offer every modern convenience. The two connected units comprise one of the largest and most complete hotels on the Pacific Coast, containing 1100 rooms.







THE appointments of the New Hotel Rosslyn and Annex have been chosen with the utmost care. Furnishings in the spacious lobbies and on the mezzanine floors are all especially designed, and harmonize in a pleasing way with the tasteful decorations. Soft rugs, comfortable chairs, pianos, and every facility for the entertainment and convenience of guests and their friends.



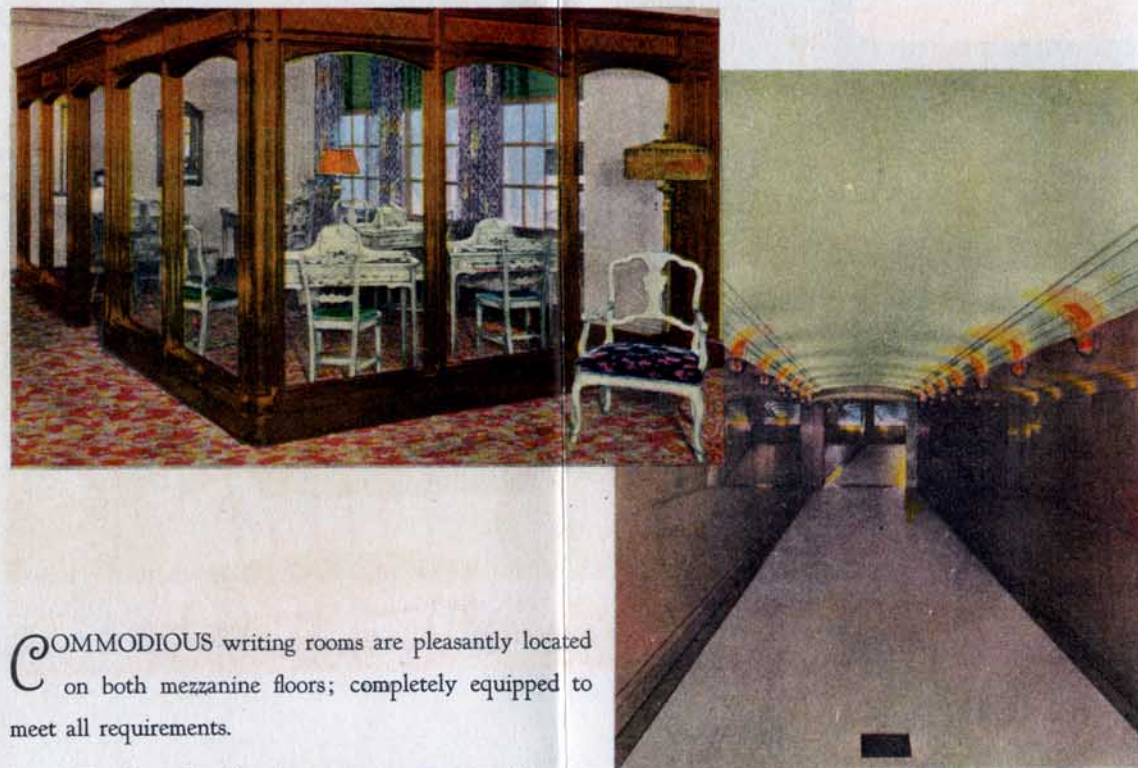
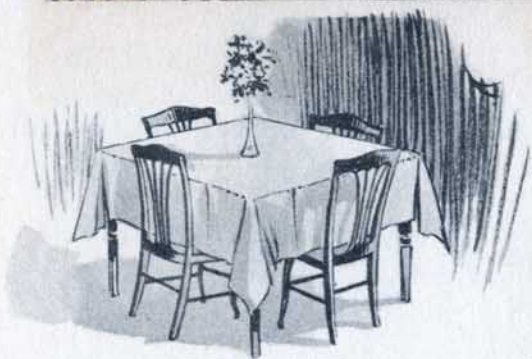
THE Guest Chambers are designed first of all for comfort. Wide, sliding windows admit plenty of air and sunshine. Rooms are tastefully furnished and decorated, enlarged dressers, lounging chairs luxuriously upholstered, comfortable twin beds or large double beds, as desired. Running ice water, delivered by circulating system, in every room; soft water for lavatory and bath. Telephone service in every room.







AWARE of the importance of good food in the entertainment of visitors, the Hotel Rosslyn has for many years given special attention to its dining service. The Dining Room, spacious and inviting, with seating capacity of five hundred persons, is located on the mezzanine floor of the Main Hotel. It has long been noted for its excellent food and reasonable prices.



COMMODIOUS writing rooms are pleasantly located on both mezzanine floors; completely equipped to meet all requirements.

The New Rosslyn Annex is connected to the main building by the unique means of an underground subway, which is the first to be constructed on the Pacific Coast. The great subway is of reinforced concrete, lined with gray Tennessee marble and lighted by wall brackets.







**A** MAGNIFICENT, safe, double-deck Bus provides transportation to and from the various railroad stations. The Rosslyn is the only hotel in Los Angeles supplying this service free of charge to guests.

The Rosslyn Hotel and Annex are very conveniently located to all business, shopping and amusement districts. Headquarters for one of the largest Sight-seeing Auto Touring Companies of the Pacific Coast. Also, one block away is the Pacific Electric Station, which operates large, safe, steel cars to most of the beaches and to beautiful surrounding country and famous mountain resorts, golf clubs, etc.

# LOS ANGELES NEW HOTEL ROSSLYN AND ANNEX

HOTELS - LOS ANGELES -  
ROSSLYN HOTEL AND  
ANNEX

Calif. Vt

