

1924

page 1

1924

1924

28 P



~~Pasadena~~ Tournament of Roses ~~1924~~

Pasadena--Progressive, All-Year-Round Home City



PRESENTATION of the Tournament of Roses annually for thirty-seven years is only one of many achievements which mark Pasadena as an unusual community. The growth of Pasadena from a little colony of fruit growers to a city of more than 60,000 population has been due to its high type of citizenship no less than to natural advantages truly exceptional.

Lying on the north slope of the beautiful San Gabriel Valley, at the foot of the Sierra Madre mountains, its scenic surroundings are picturesque and beautiful. From it radiate many miles of paved boulevards, linking Pasadena to the mountains, the fruitful valleys and the sea. In a more material sense, Pasadena's situation is a favorable one, as it is only eleven miles from the business section of Los Angeles, Southern California's metropolis.

Pasadena first won fame for its delightful winter climate. In more recent years Pasadena has become distinctly an all-year-round home city.

Pasadena is governed by a City Manager and a City Board of Directors, a system which has now been in effect about three years and which has given increased efficiency and economy in the administration of public affairs. The city owns its light and power utilities, supplying current at one of the lowest rates to be found anywhere in the United States. It



also owns and distributes its own water in a manner highly satisfactory to its citizens. The city is noted for its miles of tree-lined streets, well paved, well lighted and well kept.

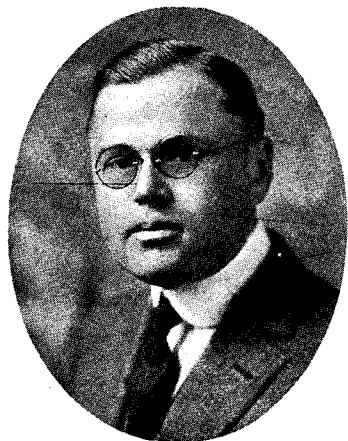
Pasadena's educational system is complete, efficient and modern. From kindergarten through high school, its children to the number of 15,000 find every advantage which can be offered by an intelligent and generous community. Several colleges in and near Pasadena afford excellent facilities for higher education.

More than fifty churches, many of them occupying large and beautiful edifices, give evidence of the religious and spiritual ideals of the community.

An active Chamber of Commerce, with a membership of more than 1000, is a strong supporter of movements for

civic improvement. Many other civic, social and business organizations are important factors in the life of the city.

The business life of Pasadena has made extraordinary progress in the past few years. Industrially also, Pasadena is developing along distinctive lines, welcoming, as it does, those industries which do not detract from the cleanliness or charm of the city. In all its rapid growth and development, however, Pasadena has kept the "home city" ideal well to the front. For specific information address City Manager, Pasadena.



*Dr. Remsen D. Bird,
President Occidental College*



GROUP OF OCCIDENTAL COLLEGE BUILDINGS

From left to right—Facades of Johnson and Fowler Halls—Fine Entrance to Johnson Hall—A "close-up."



*William Meade Orr
Donor of Woman's Dormitory*

Calendar of Pasadena's Golden Jubilee Year

Plans for the celebration of Pasadena's Golden Jubilee Year include, in addition to the activities of scores of local organizations, a large number of events of much more than local interest. Among the general events on the calendar are the following:

(Note—Where dates are left blank, the exact dates have not yet been fixed.)

JANUARY

1—Tournament of Roses; 6—"My City" Sunday; 27—Founders' Day Program.

FEBRUARY

12—Lincoln Birthday Program; 22—Washington Birthday Program; —Home Products Week.

MARCH

13—Daughters of the American Revolution, State Convention.

APRIL

10—National City Planning Conference Dinner; 14—Grand Council, York Rite Masons of California; 15-16—Grand Chapter, Royal Arch Masons of California. 17-19—Grand Commandery, Knights Templar of California; 15-20—Southern California Amateur Golf Tournament; 28-30—California Library Association Convention; —Pasadena District Epworth League Convention; —Drama League National Convention; —Flower Show.

MAY

4-7—Knights of Columbus State Convention; 12-18—Grand Lodge of Odd Fellows of California; 19-24—Master Plumbers' Association of California Convention; 20-24—Congress of Mothers and Parent-Teacher Associations of California; 30-31—California Federation of Women's Clubs Convention; 30—Memorial Day Program and Parade; —State Optometrists' Association Convention.

JUNE

13—California Institute of Technology Commencement; 14—Flag Day Program; 16-20—National Convention, American Society of Civil Engineers; 19—Pasadena High School Commencement; 25-28—California and Nevada Regional Convention, Veterans of Foreign Wars; —Registered Nurses, State Convention; —Pharmaceutical Association, State Convention.

JULY

4—Independence Day Celebration; 31—Robert J. Burdette Day; —State Firemen's Association Convention; —National Park Commissioners' Convention; —Community Picnic; —Festival of States.

AUGUST

5-7—Pacific Coast Fire Chiefs' Association Convention; —Midsummer Festival; —Thaddeus Lowe Day.

SEPTEMBER

1—Labor Day Celebration; 9—Admission Day Celebration; —Woman's Christian Temperance Union State Convention; —California Funeral Directors' Convention.

OCTOBER

1—Southern California Methodist Conference; 8-11—California Real Estate Association Convention; 12—Columbus Day Program; 13-17—California Grand Chapter, Order of Eastern Star; 13-18—National Convention, American Institute of Electrical Engineer; 27—Roosevelt Day Program; 31—Hollowe'en Parade; —Flower Show.

NOVEMBER

11—Armistice Day Celebration; 21—Playground Day.

DECEMBER

10-13—Poultry Show. 25—Christmas Observance. Mile of Lighted Christmas Trees.

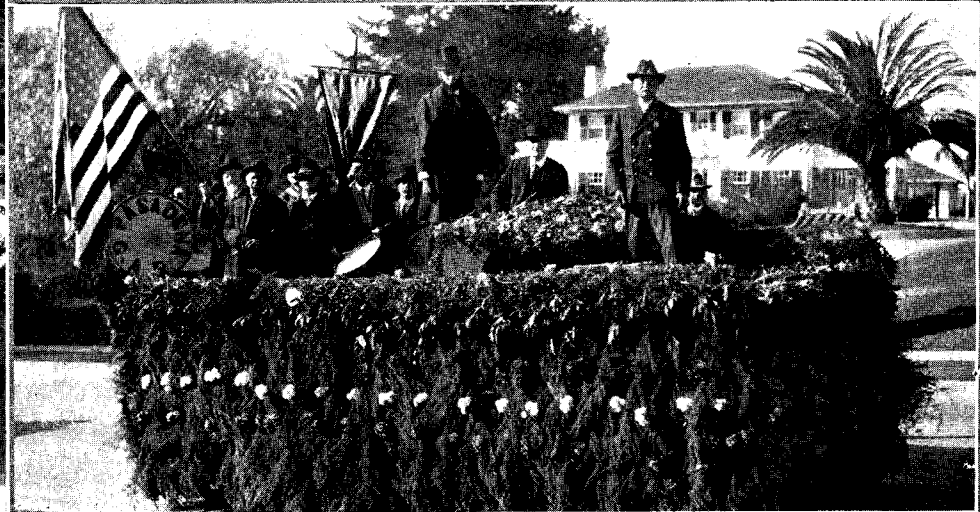
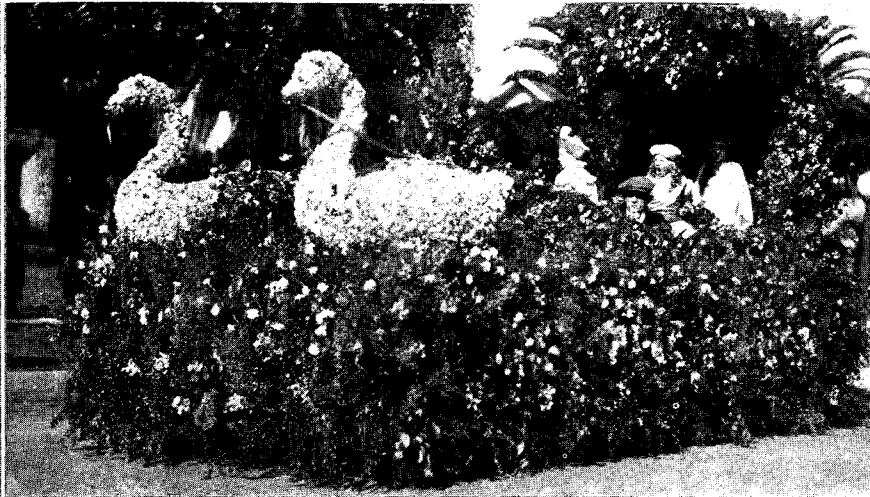
Thirty-Fifth Annual

PASADENA'S masterpiece of floral pageantry, the thirty-fifth annual Tournament of Roses, was presented today under the sunniest of skies. In number and variety of entries and in the size of the crowd which witnessed it, today's parade probably never has been surpassed in the entire history of the Tournament. Estimating the size of a Tournament crowd is never possible with any accuracy, but it certainly would not be far above the mark to say that today's parade was witnessed by more than a quarter of a million persons.

Literally millions of flowers were used in the decoration of floats, some of the entries being a mass of roses, while in some the predominating flowers were carnations, poinsettias, marigolds, chrysanthemums, challengilas, cornflowers, many varieties of wild flowers and a score of other choice blossoms of the southwest.

Today's parade demonstrated more than any that has gone before it that the Tournament of Roses is no longer strictly a Pasadena event. From all parts of Southern California came representatives of gracious sister cities bringing happy congratulations to Pasadena on entering her Golden Jubilee Year.

Upper Left, Naval Academy Float; Lower Left, American Legion; Lower Right, Grand Army

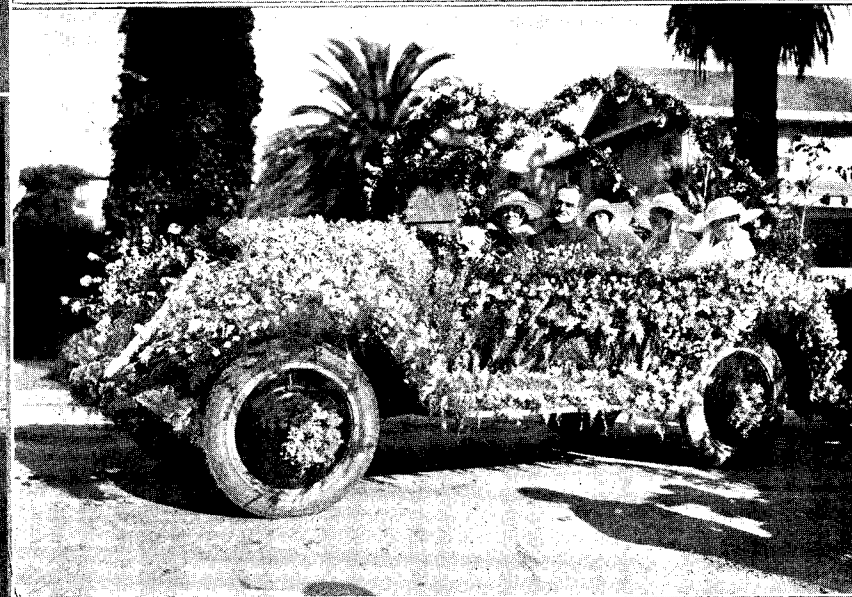
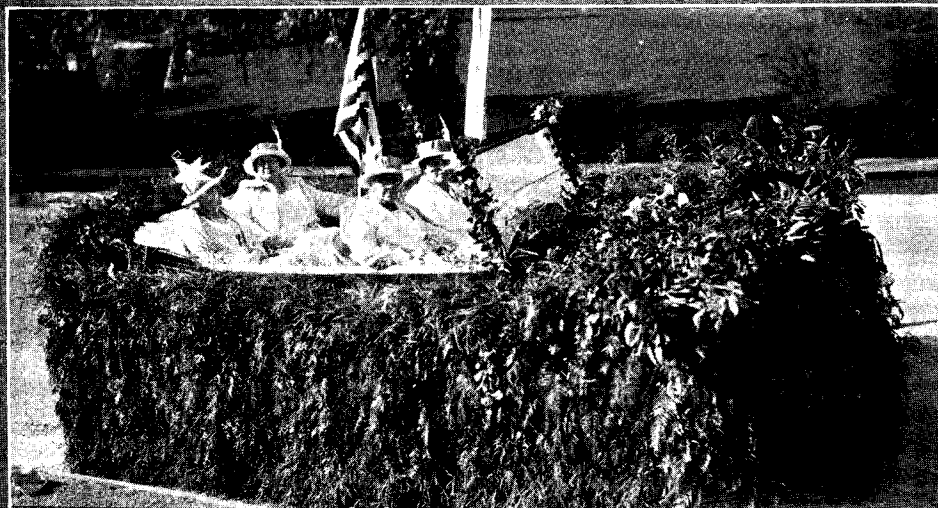


Tournament of Roses

OUTSTANDING features of today's parade were the historical floats and the Elks' floats, constituting two entirely new divisions, the third and the fifth. The historical division was planned for Golden Jubilee year to tell a portion of Pasadena's romantic story. Its floats, sponsored by various organizations, portrayed historic scenes from the distant past to the teeming present. The pictures of Indian, Spanish and pioneer days were especially effective.

The Elks' division was also planned especially for this year in honor of James G. McFarland, Grand Exalted Ruler of that fraternity, who is here on an official visit to Harry M. Ticknor, Grand Esteemed Leading Knight of the Elks and chairman of the Parade Committee of the Tournament. Lodges of Elks from all parts of Southern California participated and the distinguished visitor reviewed the pageant from the steps of the Elks Home on West Colorado street. To show his appreciation of the honor, Mr. McFarland offered a beautiful silver trophy for the best entry in the Elks' division. This was won by Glendale Lodge of Elks.

Below, Woman's Relief Corps; Upper Right, Washington University Float; Lower Right, Young Ladies Institute.



Historical and Representative Floats Portray Beauties of Southern California

WITH the blast of a bugle by a mounted member of the American Legion, the Tournament parade swung down Orange Grove avenue on its long march at 10:45 this morning. The bugler was followed by Chief of Police Charles H. Kelley and a detachment of officers. The Pasadena Elks' Band was first in line.

Grand Marshal and Aides—Col. George S. Parker, grand marshal, and his aides, J. H. Henry, Dr. Russell Ball, William H. Archdeacon and George W. Wetherby, rode at the head of the first division.

Tournament Entry—"Madame Butterfly" was the entry of the Tournament of Roses Association. An immense vase of white carnations, holding red roses, was a central feature. A gorgeous butterfly was perched atop the float, while the outwalkers were also representative of butterflies. Those who rode were the Misses Wiberg, Ruth Thompson, Bernice Asadoorian, Morris Stanley, Myron Thomas and Joseph Stout, while those walking were Stanley Rise, Charles Fisher, Marlin Jenkins, Marvin Jenkins, Elton Hankins, Perry Seilor, Nestor Oulie and Donald Montgomery.

Tournament Directors—A group of directors of the Tournament Association rode in a richly decorated car, in which pink roses and pink carnations were used. Those riding were President W. F. Creller, W. L. Leishman, H. M. Cole, J. W. Wood and L. H. Turner.

County Supervisors—In a car decorated profusely with Scotch heather and pink carnations rode representatives of the county government. Those in the car were Supervisor and Mrs. Henry W. Wright, Supervisor P. F. Cogswell and Miss E. M. Belcher.

Los Angeles City—The City of Los Angeles was represented by Acting Mayor Boyle Workman and the mayor's secretary, H. H. Kinney, riding in a car, which was literally a bower of the loveliest roses. Members of the Los Angeles City Council rode in another car, decorated lavishly with red roses. Those riding were Ralph Criswell, Robert M. Allan, Miles S. Gregory and City Engineer John A. Griffin.

City Directors—Pasadena was officially represented by a car decorated in pink carnations, pink roses, sweet peas and ferns. Those riding were Chairman Hiram W. Wadsworth, City Manager C. W. Koiner, Directors Frank May, Carl C. Thomas, Franklin Thomas, F. R. Harris, MacD. Snowball and J. H. Simpson.

Second Division. M. S. Pashgian, marshal; C. E. Hill, G. M. Wilson, M. W. Atwood and Dr. LeRoy B. Sherry, aides.

Los Angeles Chamber—"To Pasadena" was the toast of the Los Angeles Chamber of Commerce, worked in violets against a marigold background, forming Pasadena's jubilee colors. A huge loving cup was filled with gorgeous roses. Four daintily attired girls enhanced the beauty of the float.

Glendale—In one of the most elaborate floats ever entered in a Tournament parade, the City of Glendale was depicted as a fairyland at the end of the rainbow, where the gold of contentment is to be found. Cornflowers, marigolds, sweet peas of rainbow hues,

orchids, narcissus, roses and many other flowers were used in the decoration of this float.

Sierra Madre—A country club scene, with veranda, pergola and tea garden was depicted by Sierra Madre. The beautiful floral decorations included the wistaria, symbolic of "The Wistaria City." The float was entered by the Civic Association of the foothill city.

Long Beach—A gondola of pink carnations and smilax was the entry of the Long Beach Chamber of Commerce. The charm of the beach scene was enhanced by the presence of little Virginia Montgomery as queen and Misses Katherine Maher, Enola Thrash, Audrey Shelton, Edna Granger, Inez Donovan and Harriet Grizy as mermaids.

Anaheim—The shield of the Golden State was depicted in the entry made by the California Valencia Orange Show of Anaheim. The floral shield was ten feet in diameter and the figures were attractively posed and costumed.

Hermosa Beach—An ocean wave of carnations and other flowers rolled upon the shining sands of Hermosa Beach in the float entered by the Chamber of Commerce of that city. A beautiful woman in red satin gown typified the "Aristocrat of the Beaches."

Montebello—The entry of the Montebello Chamber of Commerce was one of that city's municipal busses, decorated in white narcissus and smilax. Twenty-five charming high school girls rode.

Pomona—Golden oranges and varicolored flowers were used in profusion by the Pomona Chamber of Commerce in its entry, representing the Goddess of Fruit. Miss Edna May Diaz posed as the goddess. Bearing orange trees were planted at the corners of the float.

Santa Monica—A yacht of flowers, fashioned of white candytuft, cornflowers and other blue and white blossoms was the striking entry of the City of Santa Monica. Dancing on the deck of the yacht was a group of boys and girls made up of Frances Hopkins, Isabel Wyse, Patricia Woodard, Max Stanley, John Card and

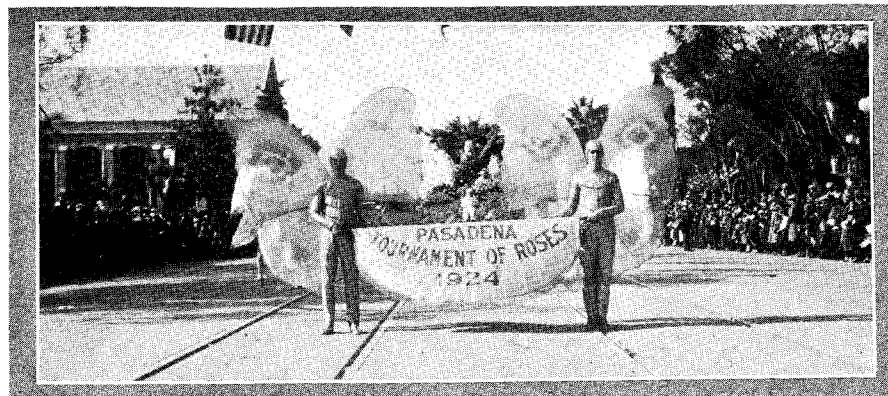
Fred Stadelman. The effect was heightened by the appearance of the Santa Monica band in yachting costume.

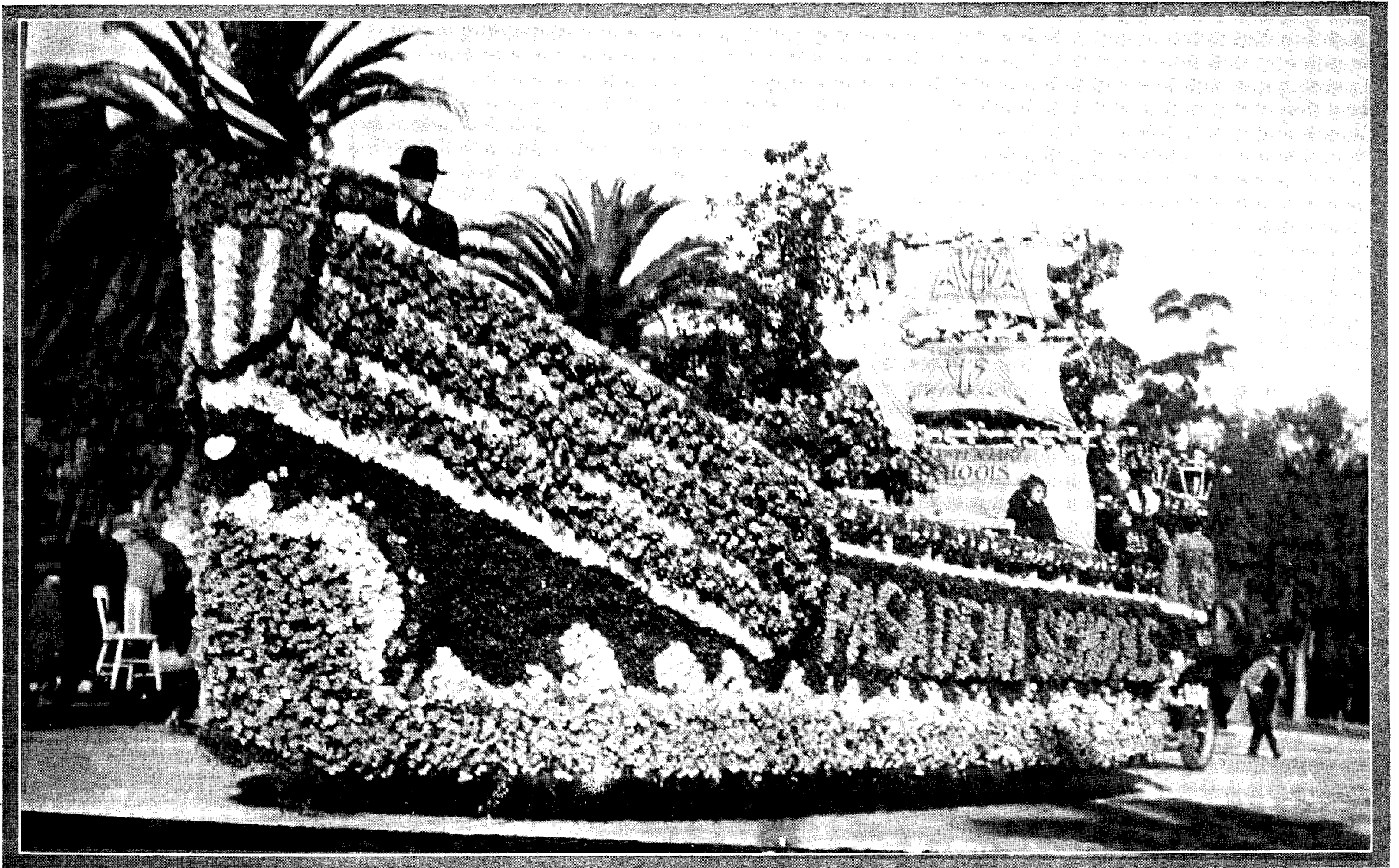
Culver City—A typical California home and garden were represented by the entry of the Culver City Business Men's Club. Red and white carnations and other flowers were used in profusion.

Redlands Chamber—A shell of gold, carrying Pasadena's jubilee colors, was the graceful entry of the Redlands Chamber of Commerce. A mass of marigolds was used to fashion the great shell. Corn flowers and other blossoms were used to advantage against a background of desert holly. Those who rode were Miss Gladys West, Cora Heath, Laura Heath, Barbara Crane and Margaret Gregory.

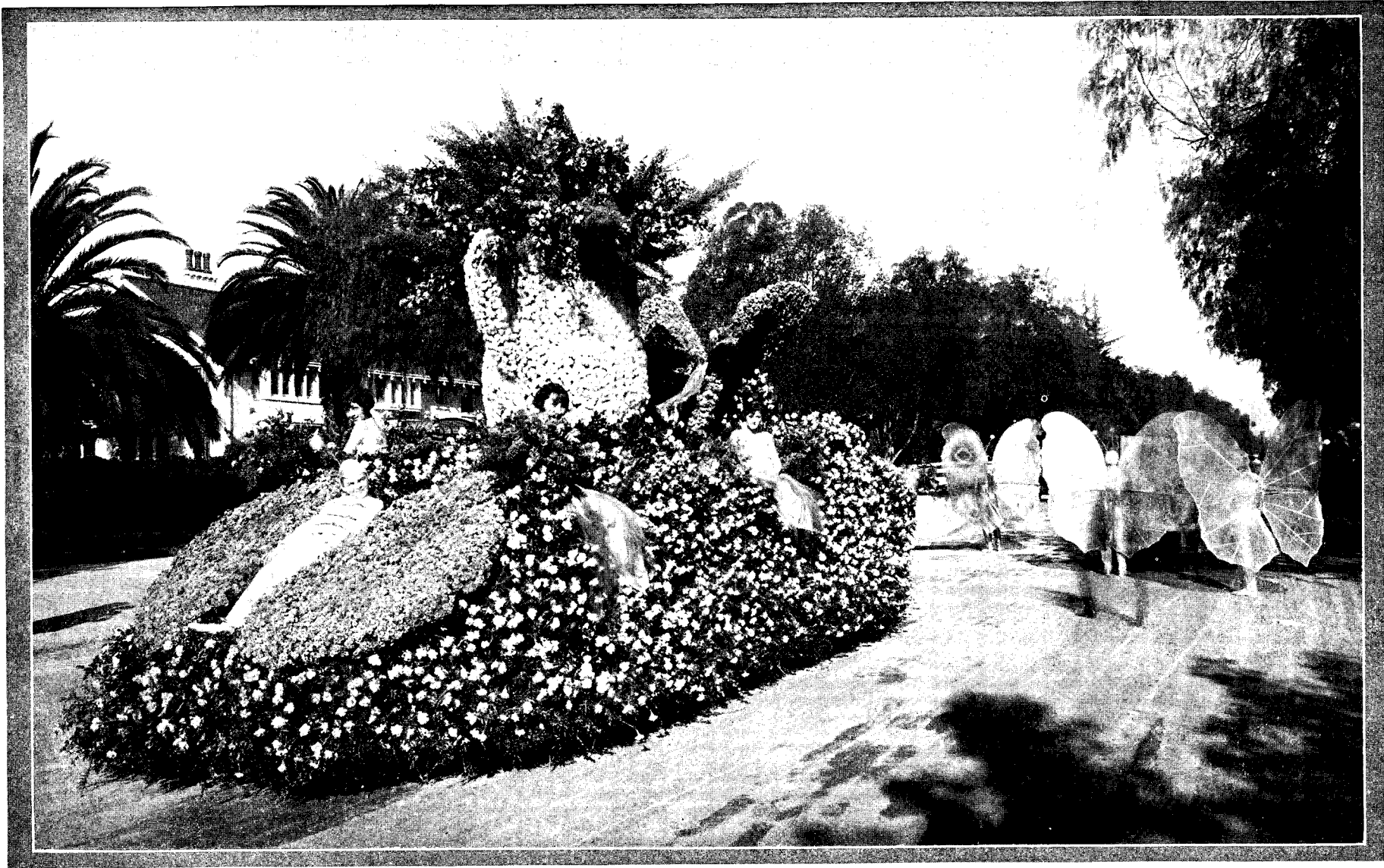
Upland and Ontario—Congratulating Pasadena upon her jubilee year, the cities of Ontario and Upland entered an airplane float, decorated in blue and gold flowers. Miss Ruth Crikling was "Miss Ontario," and Miss Lena Blair was "Miss Upland."

South Pasadena—"South Pasadena on top" was the idea carried out literally in the

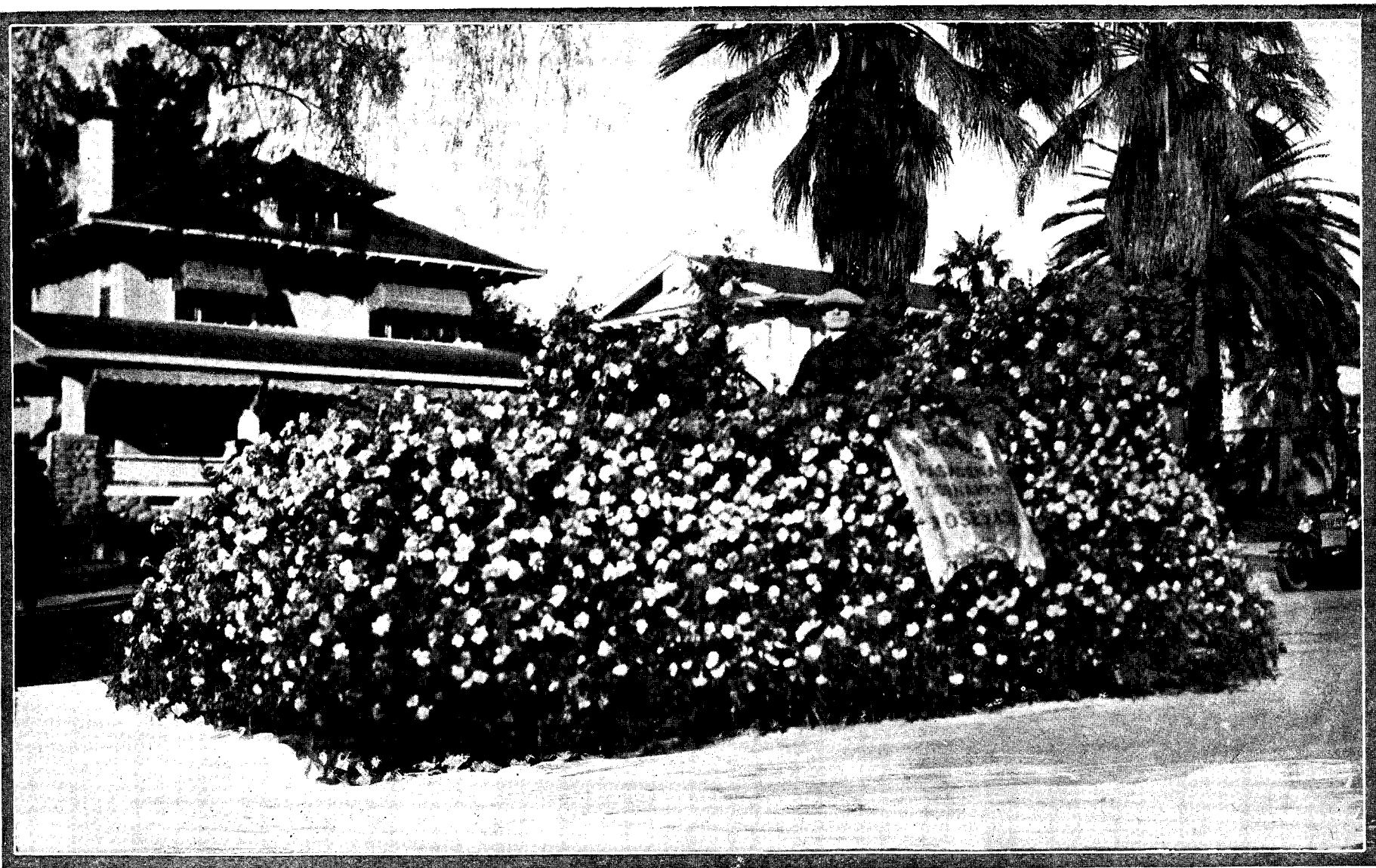




Public Schools of Pasadena Represented by Gorgeously Decorated Float of California Flowers, Depicting Ship in Full Sail, Manned by Valiant Crew of Happy Boys and Girls Who Are Here Obtaining Their Education Under Ideal Conditions.



Tournament of Roses Association Float Depicts Charming Scene, Wrought in Beautiful Blossoms, in which Madame Butterfly Brings a Huge Vase of Flowers, with a Fairylike Company of Gossamer Winged Attendants Reveling in California Sunshine.



Pink Roses and Pink Carnations Predominate in Second Entry of Tournament of Roses Association, a Striking Example of Beauty in Massed Blossoms without Resort to Allegorical or Representative Characterization in Producing Its Effect for California's Midwinter Event.

float entered by that city. The spinning floral top was a novel and attractive feature. A group of girls rode on an elevated platform banked with flowers. They were the Misses Esther Hargrave, Betty Oswald, Hazel Russell, Jeanette Luebbert and Margaret St. Claire.

Monrovia—A Venetian gondola was the beautiful entry of the people of the neighboring city of Monrovia. Poinsettias, carnations and heather were used in the lavish decoration of the float. Three high school girls, Lurene Tuttle, Ruth Talbert and Dorothy Clifton rode on the float.

Pacific Palisades—The largest float and one of the most elaborate was the Temple of Peace, entered by the Palisades Chamber of Commerce, representing the temple to be built at the Pacific Palisades. White carnations, white sweet peas and a profusion of wild flowers were used. Those riding were Jean Barnbrook, Wendell Scott, Robert Gettys, Jean Anglemeyer and Bonnie Buckner.

Pasadena Hotel Corporation—Two floats entered by the Pasadena Hotel Corporation were typical of the two institutions participating in today's football game. The Naval Academy float featured two swans of white carnations, driven by Miss Dorothy Savage as queen of fairies. Her attendants were Dorothy Shute and Benjamin Wilcox, Jr. Sailors leading the navy mascot, a goat, brought up the rear. The University of Washington float showed a racing shell manned by small oarsmen. The craft was made of yellow chrysanthemums. Those riding were Jean Carlton, Herbert Packard, Robert Peterson, Bennett White, Harold Packard and Lawrence P. Roth.

Raymond Hotel—The three white horses which for years have drawn the Raymond hotel entry were hitched this year to a Chinese ship, named the "Mah Jongg." Cerise and white carnations and sweet peas were used. Those who rode were the Misses Bessie, Alice and Florence Cotterill, Miss Blanche Ellis and Norman Felder.

Pasadena Schools—The public schools of Pasadena were represented by one of the most beautiful floats in the parade. It represented a large sailing vessel and was fashioned of roses, carnations, candytuft, cornflowers and many other blossoms. A large group of school pupils were passengers aboard the magic ship.

Chamber of Commerce—Pasadena was beautifully represented as the heart of Los Angeles county in the float entered by the Pasadena Chamber of Commerce. Heather and pink carnations were used in profusion. Those who rode were Miss Jessie Ogston, Miss Marie Heinen and a group of children.

Third Division. Dr. J. Tyler Parker, Jr., marshal; C. Elmer Anderson, Lawrence M. Jones, Neil C. Hotaling and Ray C. Maple, aides.

Park Department—Assuming that Pasadena was the site of the garden of Eden, the first float in the historical division depicted Adam and Eve in the garden. Beautiful flowers and trees and tropical birds made a little paradise of this float, which was the entry of the Pasadena Park Department. Miss Nita Bandbury and H. A. Webber rode.

Cauldron Club—The Cauldron Club entry represented the smoking of the pipe of peace between a Spanish officer and an Indian chief. A picturesque campfire scene was shown, with natural shrubbery. F. B. Guernsey, Robert Loofbourrow and Edwin Jones rode.

Mission Play—The beautiful and elaborate entry of the Mission Play was a representation of the San Gabriel Mission at the height of its glory. Spanish dancers and

musicians in colorful costumes gave life to the picture. The float was preceded by a group of real Indians, giving their Indian dances.

Lions' Club—The Old Mill, one of Pasadena's historical landmarks, was depicted in the Lions' Club entry. Poinsettias and eucalyptus fronds were used and a picturesque group of early day personages was introduced. Those who rode were Joseph A. Moore, Jack MacBride, H. Barraclough, Jesse Petrick and Glenn Owens.

Mexican Riders—Hobart Bosworth and Blanche Tuck Davis, film stars, appeared in the historical division as Mexican riders. Their horses and costumes formed a perfect picture.

Optimists Club—The Fiesta of San Pasqual in 1844 was depicted in a colorful float entered by the Optimists Club. Trees, shrubbery and potted plants were used in addition to flowers. Those who rode were Evelyn Crist, Kathryn Walker, Marguerite Gagnon, Philip Krieger, John Krause and George Garrigan. Bernard Temple was banner bearer.

Valley Hunt Club—A tally-ho drawn by four horses and accompanied by mounted fox hunters, was the picturesque entry of the Valley Hunt Club, recalling the days when the club's name was a descriptive one. Red carnations and smilax were used in decoration. A dog wagon and several fox hounds followed the float. R. C. Wentz rode beside Frank Williams, who drove. A group consisting of Frederick Carter, Louise McFarland, Virginia McFarland, Dana Marble, George Bent and Lorna Macdonell, also rode in the tally-ho. Riders were Dick Marble, Robert Sutton, P. B. Michel, F. E. Michel, Jean Marble, Mrs. Marble, Foster Rhodes, III, T. R. Lee, Mrs. T. R. Lee, Thomas Campbell and William Carey Marble, Jr. With the hounds were W. C. Marble and C. H. Snyder.

Kiwanis Club—A replica of the historic Adobe Flores was presented by the Kiwanis Club. Poinsettias and encalyptus leaves were used, the color effect being red, green and silver. Riding were Miss Marion Bates, Miss Virgene Herrington, Charles, Howard and John Black and Frank Wengren.

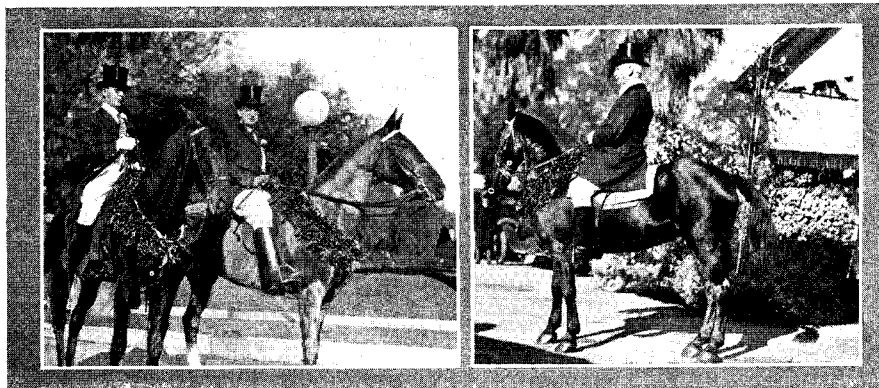
Daughters of the Revolution—The fashioning of the first American flag in California by Donna Bandini was depicted in the beautiful float entered by the Daughters of the American Revolution. The flag was a masterpiece of floral de-

sign and the grouping was an attractive one. Mrs. V. V. Van Noy posed as Donna Bandini, surrounded by her children.

Hemet-San Jacinto—The Ramona Pageant, presented by the sister cities of Hemet and San Jacinto, was represented in the entry of the joint Chamber of Commerce. The entry was a Mexican cart drawn by two great oxen and attractively decorated in red flowers. Ramona was impersonated by Kathryn Warner and Alessandro by Jeannette Rideout.

Native Sons—The Native Sons Parlors of Los Angeles and Pasadena joined in presenting a real stage coach of the old days. Gaily caparisoned horses were driven by Charley Bryant, a real stage driver. His passengers were a group of charming girls. Cowboy outriders, accompanied the coach. The entry was decorated in a variety of flowers. Passengers were Miss Adelaide Hutchinson, Miss Marval Thomas, Miss Mildred Ripley, Frank Pursell, Charles Gassagne and Al Roscerans, with Joseph P. Coyle as messenger. The outriders were C. C. Adams, Lawrence J. Hossick, Leon Leonard, G. P. Sidener, H. Tappa, J. W. Neighbors, P. Crittenden, Dr. W. P. McNamara, W. Slosser, G. Cuccia and Manuel Duarte.

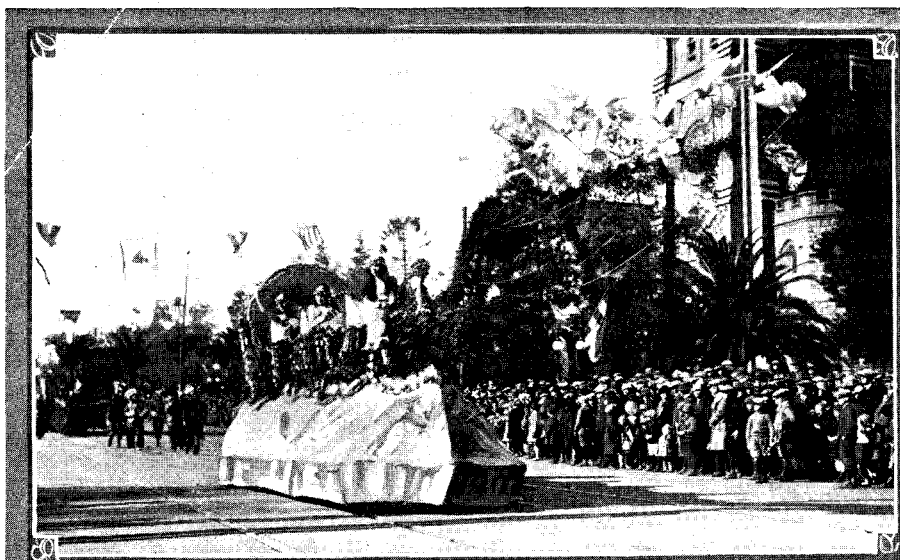
Pioneer Society—The plow of the pioneer orchardist was represented in flowers



G. W. Wetherby, Dr. Russell Ball, Aides, and Col. George S. Parker, Grand Marshal.



Floats from Four of Pasadena's Sister Cities: Upper Left, South Pasadena's Top in Red Flowers; Upper Right, Country Club Scene Representing Sierra Madre; Lower Left, Charming Craft with Charming Crew from Monrovia; Lower Right, Goddess of Fruit Representing Pomona.



Hunt. Stanley Milne appeared as Barney Google, Earl Hollander as Sunshine. They were accompanied by a burro, disguised as Spark Plug. The Harley-Davidson agency entered a decorated motorcycle with sidecar.

Fifth Division—Dr. W. A. Boucher, marshal; Charles Okey, M. N. Litson, W. F. Biatch, Fred Fowler, Charles Hayes, R. Bartlett, W. L. Brown, Joseph Miller and Paul Robinson, aides.

Los Angeles Elks—A floral clock fourteen feet high and twenty-two feet long was the entry of the Los Angeles Lodge of Elks. The details of the huge timepiece were worked out with artistic skill. Members of the drill team of the lodge rode.

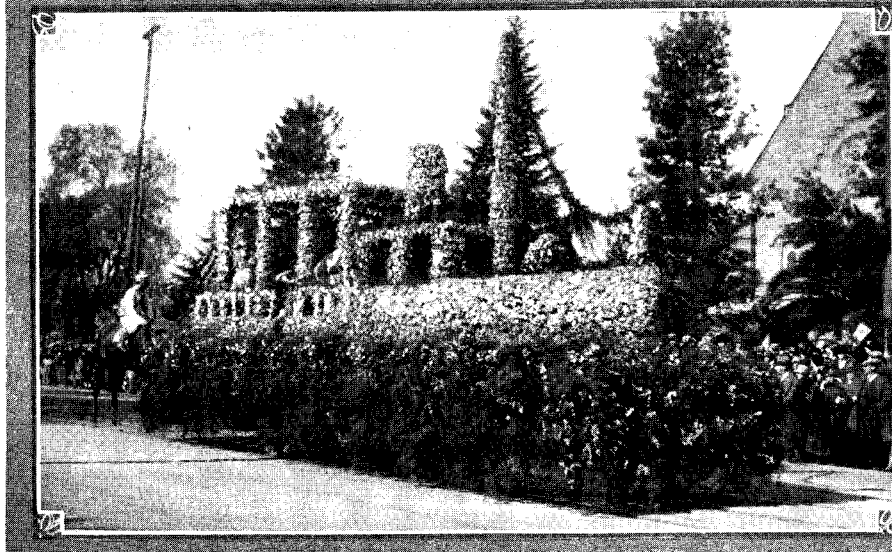
Long Beach Elks—A large elk occupied the front of the float entered by the Long Beach Lodge of Elks. In the background were snow-blanketed mountains, the whole scene being artistically conceived and carried out.

Glendale Elks—Symbolic of Charity was the beautiful float entered by the Glendale Lodge of Elks. White roses and masses of other flowers were used in the decorations. The figures were in white carnations.

Imperial County Elks—El Centro and Brawley lodges were represented by a charming float of violets and roses, with dainty hanging lamps and baskets. Miss Emma Krueger rode as Charity.

Orange County Elks—Bougainvillea and white carnations were used on the entry of the three Elks lodges of Orange County, those of Santa Ana, Anaheim and Orange. The principal feature was a large clock wrought in flowers.

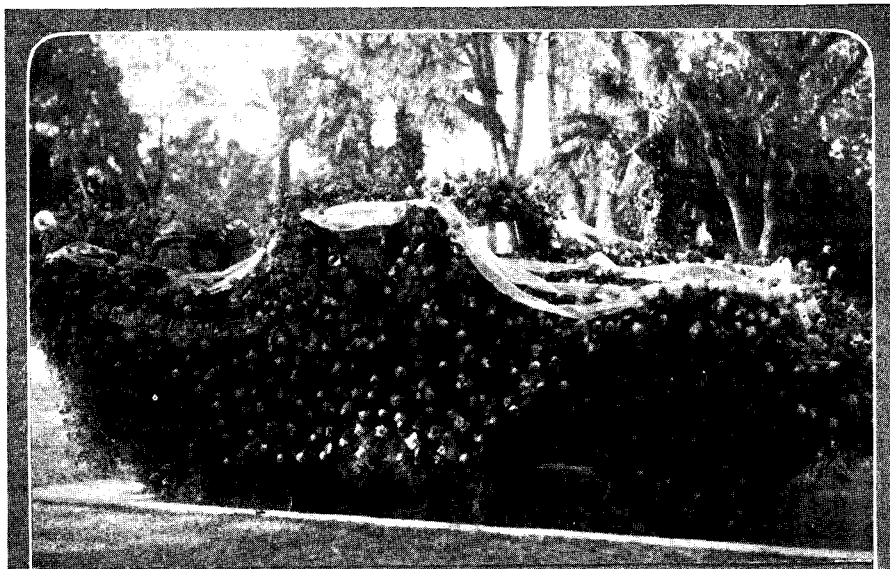
Whittier Elks—White narcissus, heather, violets and smilax were used profusely in



Choice Offerings of Seaside Cities: Upper Left, Gondola and Charming Mermaids from Long Beach; Lower Left, Fully Equipped Floral Yacht with Boys and Girls Dancing on Deck, from Santa Monica; Right, Waves Breaking on Shining Sands of Hermosa Beach with Languid Lady Afloat on Topmost Crest of Incoming Breaker.



Glendale's Wonderful Prizewinning Float Portrays Pot of Gold at End of Rainbow, with Gnomes and Fairies Loading their Hands with Treasure of Contentment; Entire Float Being Worked Out through Use of Thousands of Carnations, Marigolds, Roses, Sweet Peas and Wide Variety of California Flowers.



four little dancing girls, was the attractive entry of Turner, Dahnken & Langley. An orchestra on the float provided music.

Fire Department—The Thomas H. Ince Trophy, recently won against all Pacific Coast cities for fire prevention work, was featured in the entry of the Pasadena Fire Department. Flower baskets and floral shields in carnations, violets and challengilas were used.

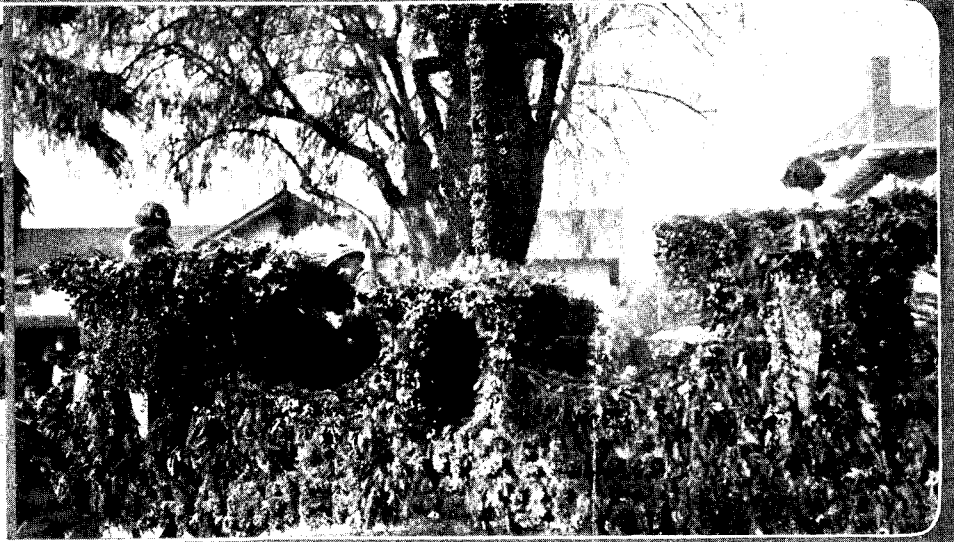
Light and Water Departments—An American flag made of red, white and blue flowers was the entry of the Municipal Light and Water Departments. More than 12,500 carnations and hundreds of cornflowers and challengilas were used against a background of smilax.

Many Bands—Bands marching in the parade were Pasadena Elks, Pasadena High School, Long Beach Municipal, Santa Monica Municipal, Compton Municipal, Van Nuys Kiwanis, Pasadena Municipal, Franklin High School, California Institute of Technology, Pasadena American Legion Bugle and Drum Corps, Jinnistan Grotto Bagpipe Band, Santa Barbara Elks, Los Angeles Elks, Glendale Elks, Whittier Elks, San Pedro Elks, Huntington Park Elks, Pasadena Shrine Club, Salvation Army Staff Band of San Francisco, Covina Municipal, Whittier State School.

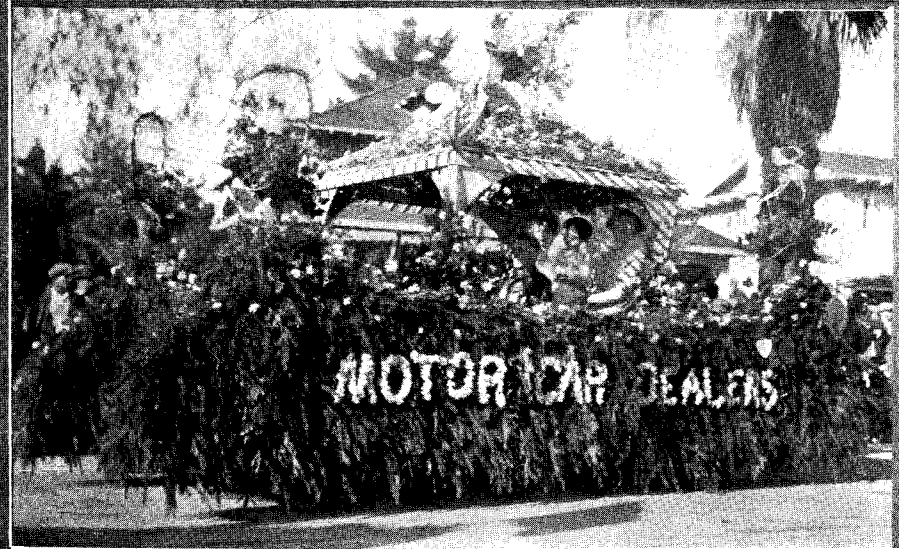
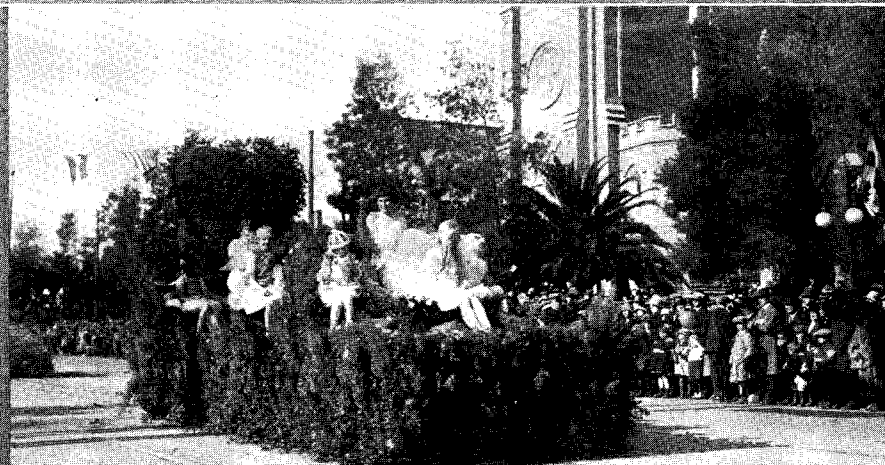
TROPHIES AWARDED TO ENTRANTS IN MANY CLASSES

Sweepstakes: City of Glendale, first; Naval Academy Float entered by Pasadena Hotel Corporation, second.

Class A, civic division: City of Glendale, first; Pacific Palisades, second; Pasa-



Los Angeles City and County Pay Tribute to Tournament: Upper Left, City Council of Los Angeles in Float of Roses; Lower Left, Representatives of Los Angeles County Board of Supervisors Ride in Richly Decorated Car; Right, Los Angeles Chamber of Commerce Brings Mammoth Vase of Roses.



Four Pasadena Floats: Upper Left, Pasadena City Directors in Car of Roses; Upper Right, Wealth of Pink Carnations Used in Pasadena Chamber of Commerce Entry; Lower Left, Pergola in Yellow Chrysanthemums, Representing Motor Car Dealers' Association; Lower Right, Replica of Rose Bowl by Pasadena Merchants' Association.



Guest from Fairyland Visits Pasadena's Rose Pageant—Mission Players of San Gabriel Portray the Old Regime—Bevy of Young Ladies Representing Hotel Raymond.

by the Pasadena Pioneer Society in an artistic historical float. Challengilas and bachelor buttons were used in carrying out the blue and gold color scheme.

First Schoolhouse—The Indiana Colony of Pasadena and the Federation of Parent-Teacher Associations jointly entered the float representing Pasadena's first schoolhouse. Geraniums, poinsettias and greenery were used in decoration. Those who rode were Miss Carmelita Seeds as the teacher and Barbara Ward and Ruth Detrick. Roger West drove.

Rotary Club—Significant of Pasadena's name, as Crown of the Valley, was the float of the Rotary Club of Pasadena. A profusion of blue and gold flowers were used in forming the crown which was the central feature. A golden vase of roses stood at each corner. Four children represented fairies. They were Marian Slater, Madge Laird, Betty Laird and Betty McKey.

Merchants' Association—One of the landmarks of today, the Rose Bowl, was represented in the float entered by the Pasadena Merchants' Association. Roses, pink carnations and smilax were used in fashioning this beautiful replica of the stadium and all the details of the football field. Two boys, Kenneth Harris and John Brookman, rode in football uniforms.

Pasadena Churches—The theme of "religion" was represented in the historical division by a float entered by the churches of the city. The world and the open Bible were the central features of the float. Carnations and smilax were used in the decoration. The American Flag and the Church Flag of the United States Navy were carried.

Red Cross—Poinsettias formed the striking decorative feature of the float entered by Pasadena Chapter of the American Red Cross. The Red Cross Volunteer was the central figure on the float. Those who rode were Mrs. Earle S. Wallace, Delphine Murray, Harry Horn and Lew Edwards.

Grand Army—Patriotism was typified in the float of the Pasadena Grand Army veterans. Poinsettias, carnations and violets were used as a setting for the historical scene. Those taking part were Charles F. Prickett as Abraham Lincoln, J. C. Lawrence, commander of John F. Godfrey Post; Capt. M. W. Halsey, color bearer; Jasper Culver, banner bearer; O. W. Kinsman, John McDonald, O. C. Stevens and B. LaMarche, drummer boys of '61; M. P. Winterburn, Frank Templeton, E. H. Williams and S. M. French, fifers.

Woman's Relief Corps—Another patriotic float was that of the Woman's Relief Corps. The float was decorated in poinsettias and other flowers. Those riding were Mrs. Ruth Snyder, president of the local corps, Mrs. Ida Hanson, Mrs. Myrtle Sherwin and Miss Sarah Aiken.

American Legion—Miss Z. A. Dupuis, nurse; Leroy Reynolds, soldier; George Sabin, sailor, and Earl Fike, marine, represented various branches of service in the

beautifully decorated float entered by Pasadena Post of the American Legion. Poinsettias and greenery gave an effective setting.

Boy Scouts—Pasadena District Council of Boy Scouts of America was represented by a float featuring the badge of the organization, worked out in wild flowers. The boys who rode were Carl Millar, E. W. Fobes, Bobbie Becker, Bob McKinley, Eustis Dyer and Watson Endicott.

Fourth Division—Fred S. Kenfield, marshal; Frank H. Randall, R. M. Thurin, E. M. Gossett and A. W. Anderson, aides.

Grand Opera—The De Lara Grand Opera Company was featured in a float entered by Robert J. Ogden. The float was decorated with wild flowers while the singers appeared in gypsy costume.

Jaeger Children—A floral submarine drawn by a Shetland pony was the lavishly decorated entry of the Jaeger children, Thelma, Robert, Norman and Edwin.

Turkish General—Enver Bey Debs, aged ten, rode as a Turkish general. He was accompanied by A. A. Thibault as an Arab attendant.

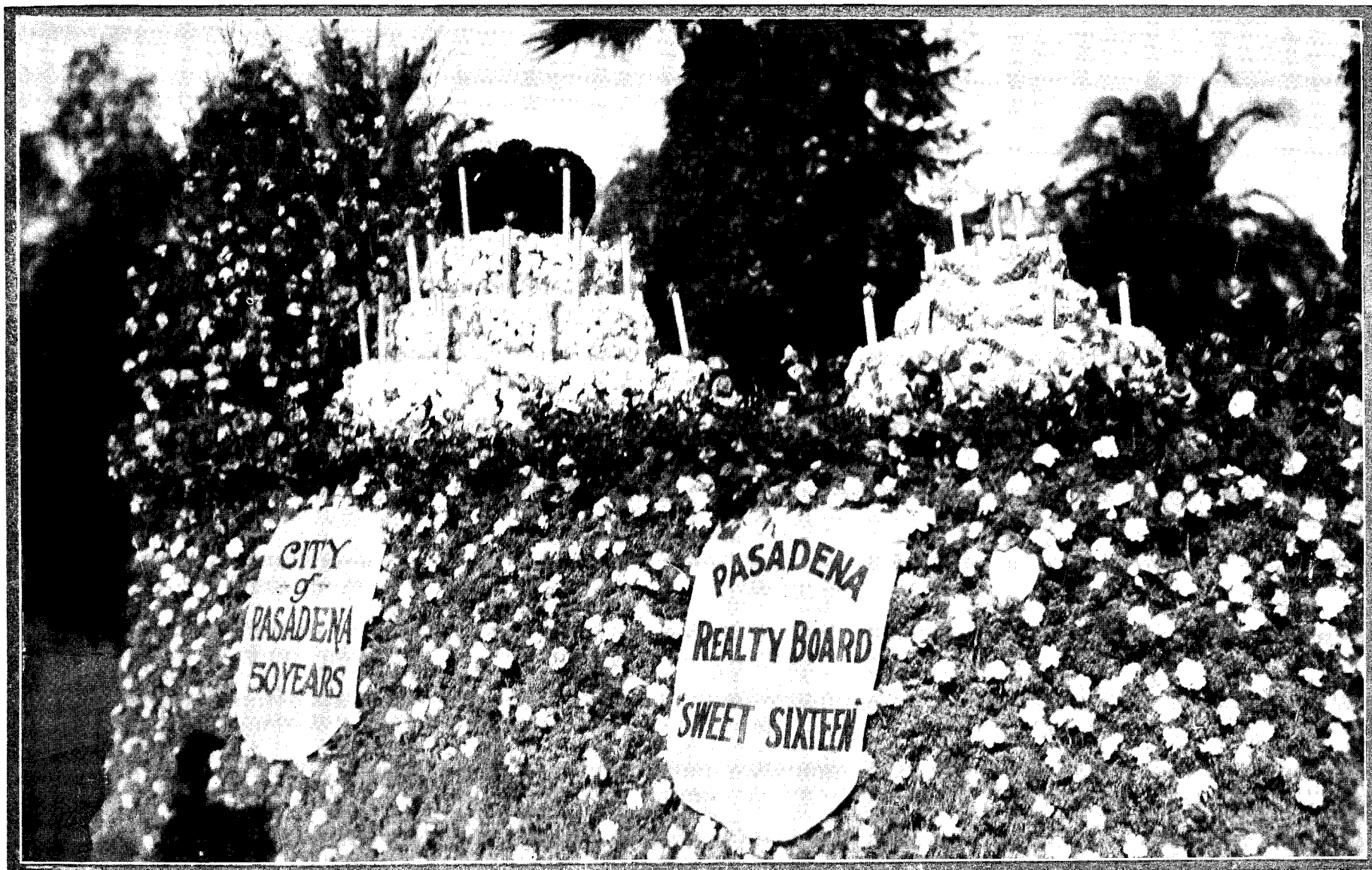
Decorated Dogs—C. W. Seifert appeared as a deputy fire warden, accompanied by two Airedale dogs.

Historical Figures—Alice and Laura Thibault represented "The Last of the Arroyo Seco-ans."

Novelty—Mrs. L. S. Kleimer entered a small novelty turnout.

Equestrian Entries—The equestrian entries were more numerous and more attractive than for several years, all of the entrants handsomely costumed and well mounted. Among those riding were Miss Mildred Raymond, Yvonne Jaeger, Miss Doris G. Ray, Miss Kathleen Fisher, Mrs. H. A. Crane, a group from the Pasadena Military Academy, consisting of George Hester, James Huston, Robert George, Erwin Wagenbach, Charles Hanson, Haskell Shay and Glenn Poole; a group of young women headed by Mrs. George C. Hester and including Miss Florence Schiffman, Miss Holly Oberle, Mrs. Lodice Strang, Mrs. Ruth Johnson and Miss Florence Otis; Miss Maud Banks of Covina, Russell Van Damme, Seraphin Van Damme, Paul Anderson, Millicent Marie Murdock, Margaret Barry, Leslie Haight, James Williams, A. G. Shriner, Miss Mabel Stau, A. H. Bailey, Julia Bestor, Joseph Gonzales, May Barry, Marguerite Rippe, Dorothy Mann, Joe Montgomery, Florence Otis, Clement Callahan, John Callahan, Verne Cook, Flore Bestor, William Cassidy, Helen Rittig, Lucy Westlake, Mrs. M. C. Curtis, Henry J. Stevens, G. R. Wellbaum and Miss Louise Wellbaum.

Novelty Entries—Charles F. Young drove a one-cylinder Cadillac decorated with garlands of roses and greenery, the entry of the Don Lee Company. The other occupants of this "honeymoon special" were Claire Painter, M. S. Richmond and F. H.



Two Large Birthday Cakes, Fashioned of Thousands of White and Pink Carnations, Show Pasadena Fifty Years Old and Pasadena Realty Board Sixteen Years Old, While Attractive Bungalow Makes One Long to Follow Realty Board's Advice to "Own Your Own Home."



Pasadena Shrine Club Band—Pasadena Elks Band—Pasadena Post American Legion Drum Corps—California Institute of Technology Band.

years for the city and sixteen years for the Realty Board. The cakes were of white and pink carnations and were decorated with sweet peas. Miniature houses illustrated the motto: "Own Your Own Home."

Great Northwest—Two attractively decorated cars were entered by the Great Northwest Improvement Association of Pasadena. Oranges and several varieties of flowers were used. Those who rode were Ernest H. Stagner, president; Russell Killgore and Frank Williams, vice president, and J. A. Kay, F. G. Huber, J. L. Burt, Lawrence Williams, A. Anderson and George Roth. M. E. Wakelee and L. A. Huston drove.

Will M. Glass—Singing his latest song, Will M. Glass rode in a decorated touring car, accompanied by Misses Charlotte McNulty, Dorothy Shepard Conant, Claire Warren and M. O. Rogers.

H. S. Thompson—H. S. Thompson and party of Los Angeles drove a car decorated in flowers and greenery.

Postal Employees—An attractively decorated car bore five employees of the Pasadena postoffice. The four carriers in uniform were Harry B. Truss, Elmer C. Carvey, W. J. Tynner and Otto G. Reisner.

Daughters of Empire—England and her colonies were represented in the float entered by the Daughters of the British Empire. British and American flags were used, the floral adornment being in poinsettias, geraniums and other flowers.

Young Ladies' Institute—A handsomely decorated car, done in roses and carnations, with a floral arch, was entered by the Young Ladies' Institute. The four young women who rode were Miss Josephine Collins, Mrs. Mary Eisenbarth, Miss Loretta Gates and Mrs. Maud Kyffin.

Civic League—Officers of the Woman's Civic League of Pasadena rode in an artistically decorated car on which carnations and other flowers were used. Those riding were Mrs. Maynard Force Thayer, Mrs. Frank S. Wallace, Mrs. M. Grant Edmands, Mrs. George H. Martin, Mrs. Edwin F. Gillette and Mrs. C. E. Ashcroft.

Salvation Army—The Los Angeles Salvation Army presented a float based on the song, "Lead, Kindly Light." It depicted children being led forward by a woman whose eyes were fixed on a gleaming star. Those who rode were Brigadier Mrs. W. H. Gooding, Mabel Fraser, Gwendolyn Spiller, Ruth Kaim.

Osteopathic College—The beautiful story of Alice in Wonderland was revived in the float of the Los Angeles College of Osteopathic Physicians and Surgeons, one of the striking entries. Those who rode were Miss Edna Miller, Miss Lillian Armour, Miss Norma Plantico, Miss Leotia Flower, J. G. Painter, Gordon Hatfield, J. C. Humphrey, Ray Huff, William Bell, F. M. Hildreth and K. E. Palmer.

Church of the Nazarene—The Holy Bible was the central feature of the float entered by the First Church of the Nazarene. Four little girls represented angels. Marigolds and other flowers were used against a background of greenery. The girls who rode were Dorothy Hunt, Mabel Spangler, Esther Osborn and Charlotte Jensen.

Angelus Temple—Emblematic of the crusades was the float entered by Angelus Temple of Los Angeles. The central feature was a replica in flowers of the temple. The float was escorted by outriders and marching women. Violets, marigolds, dahlias and other flowers were used. Among those who rode were Misses May Dillard, Evelyn McQuarrie, Violet Persson, Caroline Smith, Iva Persson and Gladwin Nichols. Mr. and Mrs. Joseph Flores rode in advance as crusaders.

County Forester—"Conservation" was the message of the float entered by the Los Angeles County Forestry Department, depicting a mountain scene. The float was preceded by four burros bearing fire-fighting equipment.

Girl Scouts—A home scene of charm was depicted by the Pasadena Girl Scouts with a simple and effective setting of green and gold.

Seventh Division—Ewart W. Adams, marshal; Col. George F. Landers, R. L. Crane, E. M. Greening and C. Balch, aides.

Motor Car Dealers—A pergola, crowned with a bronze basket of yellow chrysanthemums, was a striking feature of the entry of the Pasadena Motor Car Dealers Association. Pink carnations were used in the lettering. Those who rode were Misses Loretta Owens, Marjorie Brisley, Dorothy Groves and Max Alcorn.

Board of Labor—The Village Smithy was represented in a cleverly designed float entered by the Pasadena Board of Labor. Appropriately, this was one of the few horse-drawn floats. The Jubilee Year colors were worked out in flowers. H. O. Bundy represented the blacksmith.

Clearinghouse—Hundreds of pink and yellow roses, as well as carnations and heather were used in the beautiful float of the Pasadena Clearinghouse Association, representing the banks of the city. The five young women who rode were Misses June Morris, Anna Roberts, Dorothy Finer, Betty Merritt and Lucille Scott.

Western Auto Supply—Progress in the automobile industry was represented in the float of the Western Auto Supply Co., showing a car of this year's model and one of 1897. Carnations and sweet peas were used in the decoration. Those riding were Ben W. Smith, Alice Dickerson, Maud Sibbald, Harry Teeple, Mrs. E. H. Wilcox, Misses Florence and Esther Pepperdine and E. H. Wilcox.

T. D. & L. Theaters—A stage banked with roses and carnations, on which disported

the decoration of the Whittier Elks' float, on which were represented several symbols of the organization. Miss Fern Morehous, a beautiful girl in white, represented Charity, while little Betty Moore represented Need.

Redlands Elks—The Elks Lodge of Redlands entered an attractive and picturesque float, marked by a striking color scheme.

Santa Monica Elks—A sylvan glen was represented in the float of the Santa Monica Elks, which was dedicated "To Our Absent Brothers." Smilax, purple heather and white carnations were used most effectively.

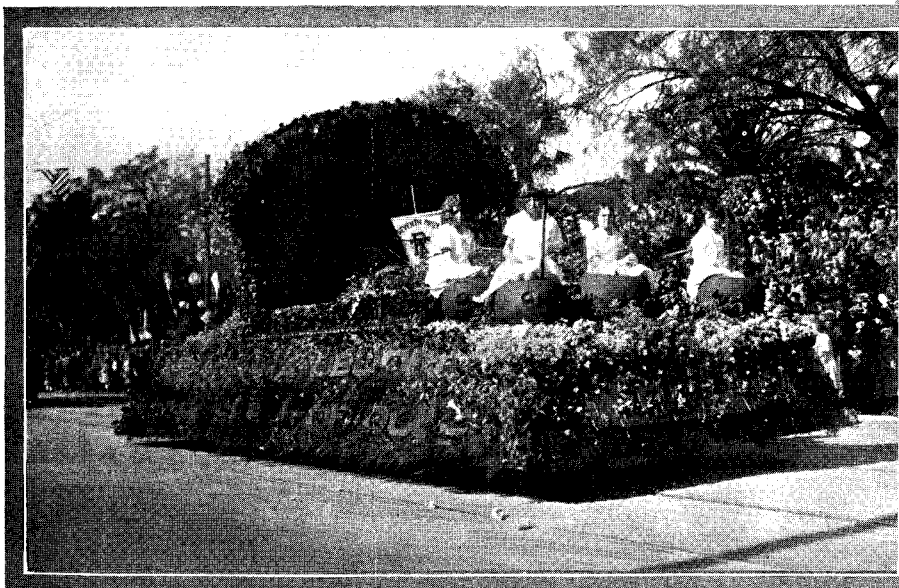
Alhambra Elks—The float of the Alhambra Lodge of Elks represented a pioneer cabin scene in a rough and picturesque setting. It was attractively decorated with simple flowers and shrubbery.

Huntington Park Elks—A forest in which appeared four white elks was the effective entry of Huntington Park Lodge of Elks. The float was decorated with calla lilies and other flowers and with an abundance of greenery. Those who rode were little Jackie Foster, Billie Salvin, Marie Seaboldt, Margaret Child, Reid Shoemaker and Stewart Child.

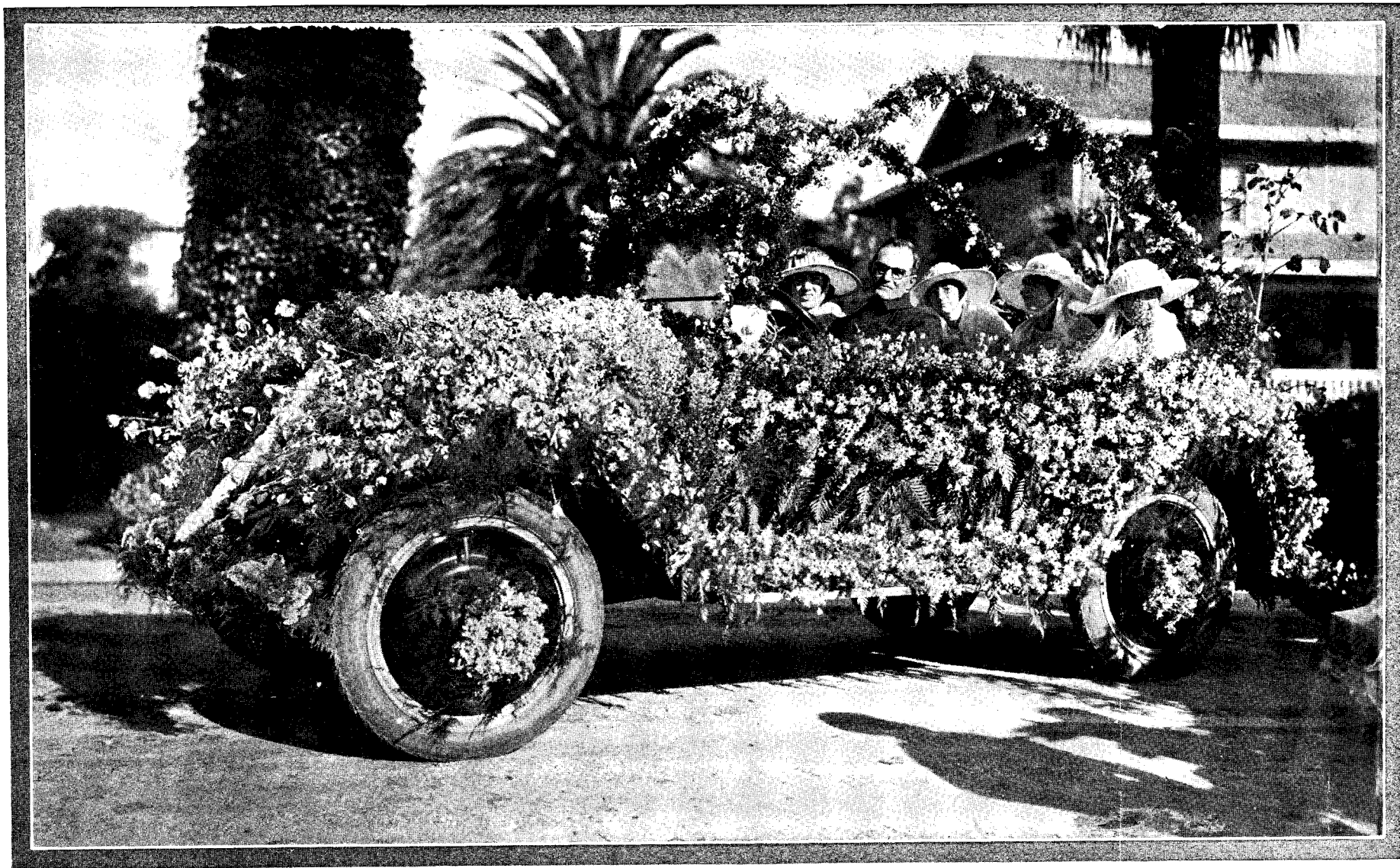
Pasadena Elks—A lifeboat, in the construction of which 100,000 carnations are said to have been used, was the beautiful float of Pasadena Lodge of Elks. The crew was attired in oilskins.

Sixth Division—T. Fenton Knight, marshal; B. P. Lester, S. R. Wilkeson, Dr. James W. Chapman and Varick D. Martin, aides.

Realty Board—Two enormous birthday cakes, one with fifty and the other with sixteen candles, were represented in the Pasadena Realty Board float, signifying fifty



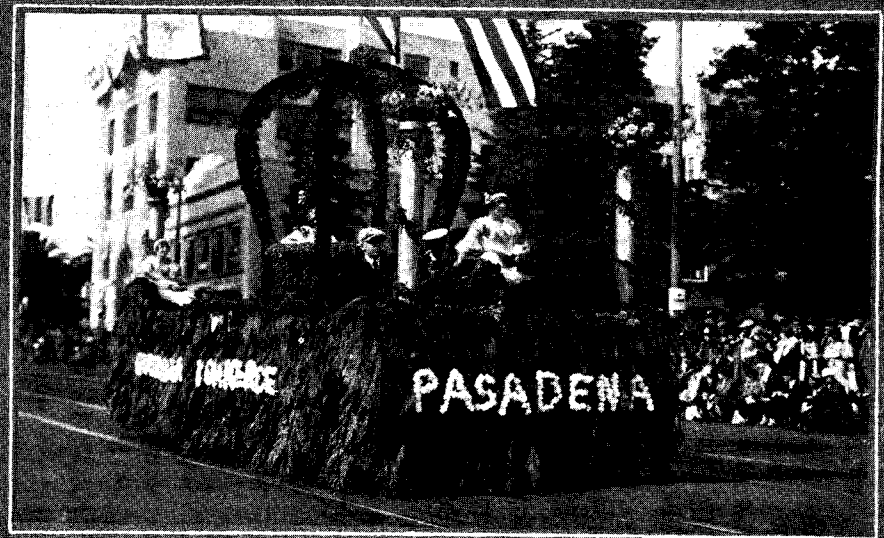
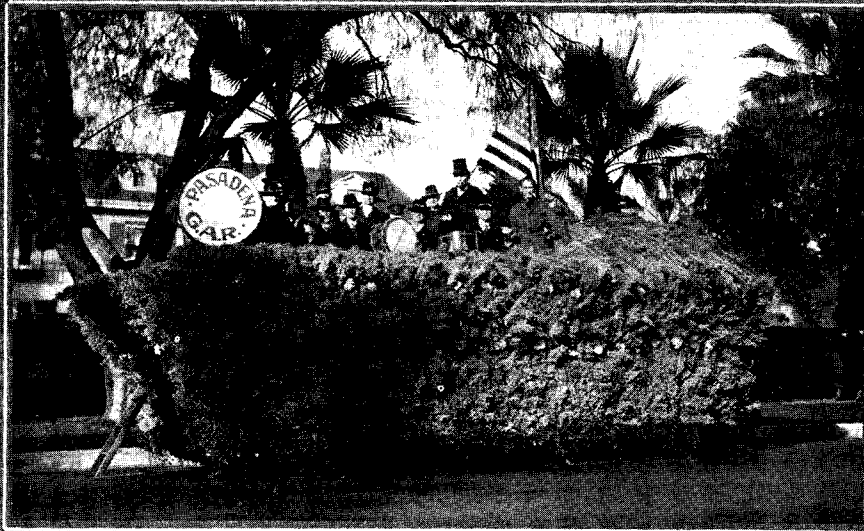
From Further Up the Valley: At Left, Cup of Gold with Attractive Group Supplying Oranges from Redlands; Upper Right, Airplane Decorated in Blue and Gold Flowers, Entered by Upland and Ontario; Lower Right, Ramona Pageant Entry of Hemet-San Jacinto Chamber of Commerce.



Members of One of the Many Social Organizations of the Crown City, Attired in Summery Costumes, Find the Ride through Long Lines of Tournament Spectators Gives New Thrill as Sunshine Shimmers on Wealth of Flowers with Which Their Float Is Decked.



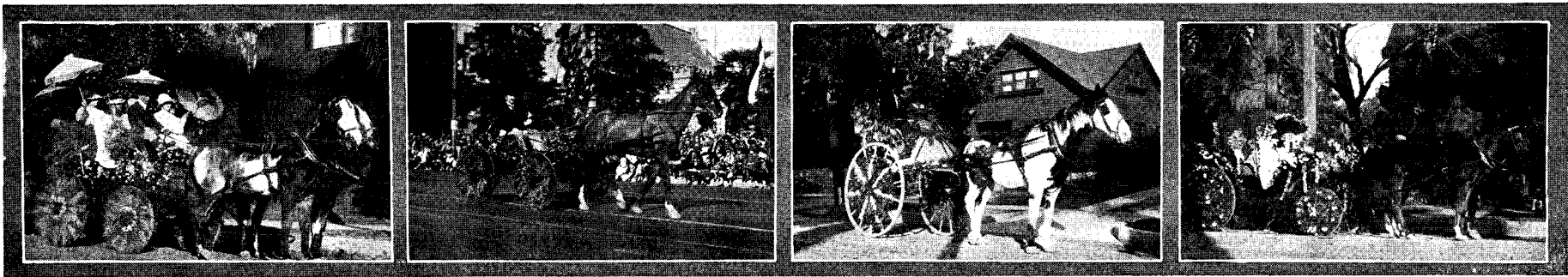
Fay Lanphier, Crowned as "Miss America" at Atlantic City Beauty Pageant, Rides in Queenly Robes as Central Figure on Tournament Association's Fountain of Youth Entry, Drawing Plaudits of Assembled Throngs



Grand Army Fife and Drum Corps, Upper Left, Wins High Praise; Pasadena Chamber of Commerce, Upper Right, Is One of Finest of Local Floats; Pasadena Post of American Legion, Lower Left, Shows War Picture; Tournament Association Directors, Lower Right, Appear in Handsomely Decorated Car



Monticello Hotel Float from Longview, Washington, Upper Left; El Encanto and Samarkand Hotel Entry from Santa Barbara, Upper Right; Tahoe Tavern from Lake Tahoe, Lower Right, and Winthrop Hotel, Lower Right, from Distant Tacoma, Lend Color to Pasadena Pageant



Historical Division, Entered by Various Departments of Pasadena Municipal Government, Testifies to Crown City's Appreciation of Those Who Created Traditions of Tournament of Roses in the Days When Present City Was Village of Few Hundred Inhabitants

merce formed an alluring picture. The home and gardens were complete in every detail.

Linda Vista—Blue cornflowers and yellow roses were used to form the huge crown which was the feature of the float entered by Linda Vista, "The Crown of the Valley."

Arcadia—"The Queen of the Foothills" and her court rode under a canopy of pink carnations on the float entered by Arcadia. The background, signifying the foothill district, was typified by mountain oak interspersed with white and lavender heather.

Silver Lake Pines—Representing a sportsman's paradise in a woodland setting, the float of Silver Lake Pines depicted the dream of a small youngster who had caught, while asleep, a big golden trout, constructed of hundreds of yellow marigolds.

San Dimas—A huge floral frog from fairyland, guided by a dainty miss, was the chief object on the float of the San Dimas Chamber of Commerce. The frog was made of shiny magnolia leaves, the rose in which the driver "rode" being of pink flowers.

Anaheim—A white fountain from which scarlet poinsettias poured formed the design of the float entered by the Anaheim Chamber of Commerce.

Winthrop Hotel—White carnations and mountain cedar were combined to form the replica of a mountain peak entered by the Winthrop Hotel at Tacoma, Wash.

Third Division—The Pasadena High School Band headed the third division together with its marshal and aides.

Tahoe Tavern—A huge horseshoe formed of poinsettias was the centerpiece of the float of the Lake Tahoe Tavern, a snow-capped mountain appearing in the background.

Fairmont and Whitcomb—These two San Francisco hotels were represented by a Chinese floral fantasy of which the centerpiece was a miniature Chinese temple.

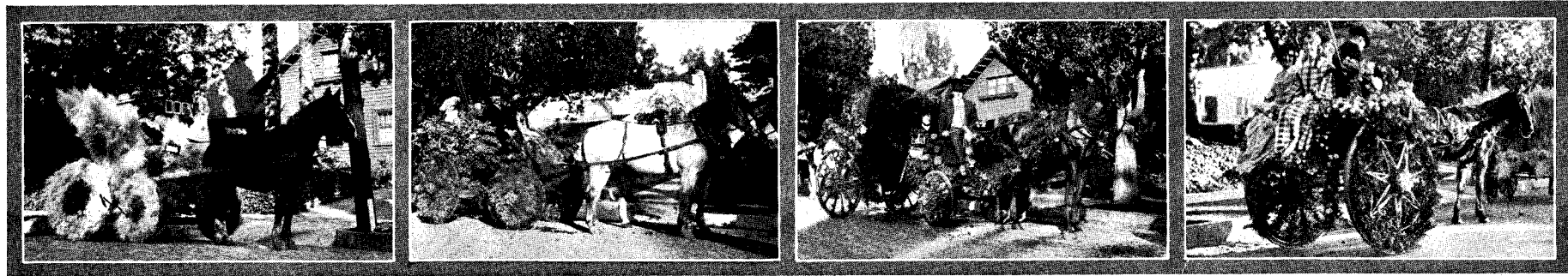
Santa Barbara Hotels—Santa Barbara was represented by a float entered by the Samarkand and El Encanto Hotels of that city. The float depicted a garden scene in front of the Samarkand with a white floral swan in a pool of blue cornflowers.

Maryland Hotel—The entry of the Maryland Hotel was a typical Southland pergola decorated in flowers of pink and lavender pastel shades with three girls in dainty costumes riding on the float.

Times-Mirror Company—Santa Claus left his reindeer behind when he finished his Christmas work in Southern California and they appeared in the parade under the auspices of the Times-Mirror Company of Los Angeles.

Huntington and Vista—Complimenting the Washington and Alabama football teams, the float of the Huntington and Vista del Arroyo Hotels exemplified the spirit of the East-West contests. A huge revolving football was worked out in flowers in the colors of the two teams.

Monticello Hotel—The Monticello Hotel of Longview, Wash., was represented by



Additional Entries in Historical Division, Sponsored by Municipal Departments, Show Picturesque Costumes and Vehicles of Kind that were Popular in Years Before Twentieth Century Had Dawned Upon City of Tournament Fame

dena City Schools, third; fourth, City of Santa Monica; fifth, City of South Pasadena; sixth, Hermosa Beach Chamber of Commerce; seventh, Redlands Chamber of Commerce.

Class B, civic clubs of Pasadena: First, Pasadena Realty Board; second and third, (two entries) Great Northwest Improvement Association.

Class C, hotel class: First and second, Pasadena Hotel Corporation for Navy and Washington floats; third, Hotel Raymond.

Class D, decorated autos for four or more persons: First, Crown City Young Womens' Institute; second, Woman's Civic League; third, Salvation Army, Los Angeles.

Class E, autos for two persons, no entries.

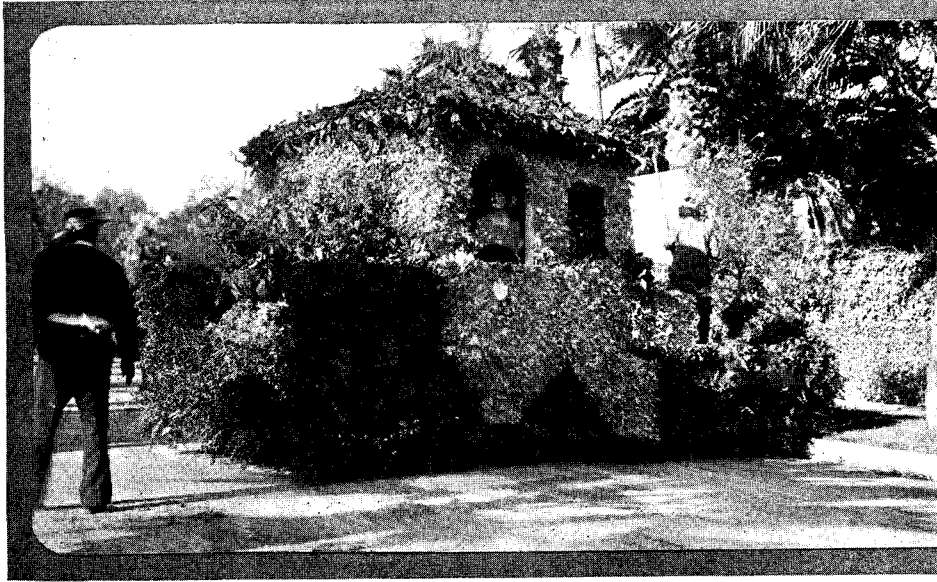
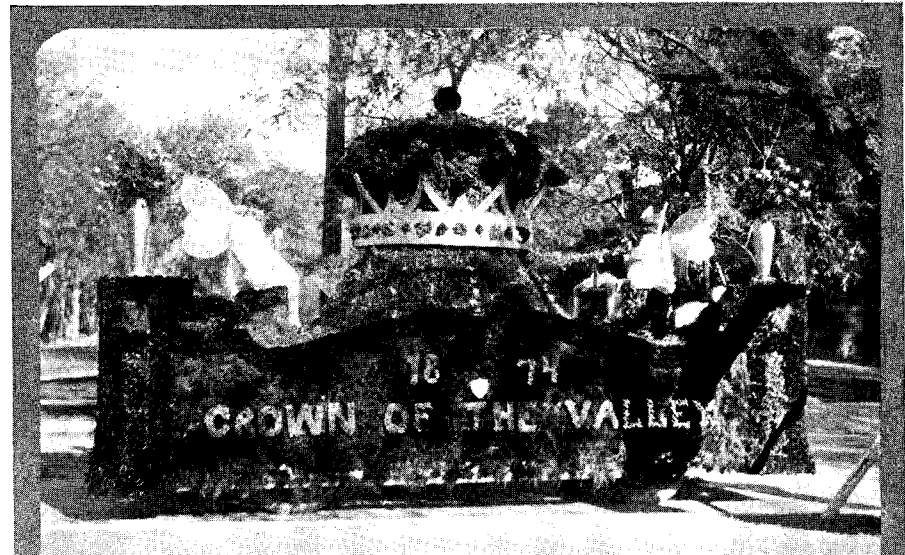
Class F, historical pageant, commemorating Pasadena's fiftieth anniversary: First, Valley Hunt Club; second, Ramona parlor, Native Sons of the Golden West; third, Mission Play, San Gabriel.

Class G, Elks' lodges of California: First, Glendale lodge, second, Huntington Park lodge; third, Los Angeles lodge.

Class H, commercial floats: First, Western Auto Supply Company; second, T. D. & L. theaters; third, Pasadena Motor Car Dealers' Association.

Class I, floats other than commercial: First prize, Los Angeles College of Osteopathic Physicians and Surgeons (K. E. Palmer); second, Angelus Temple, Echo Park; third, Salvation Army, Los Angeles.

Class J, historical characters: First prize, Even Bey Debs; second, De Lara Grand Opera Company. No third prize award.



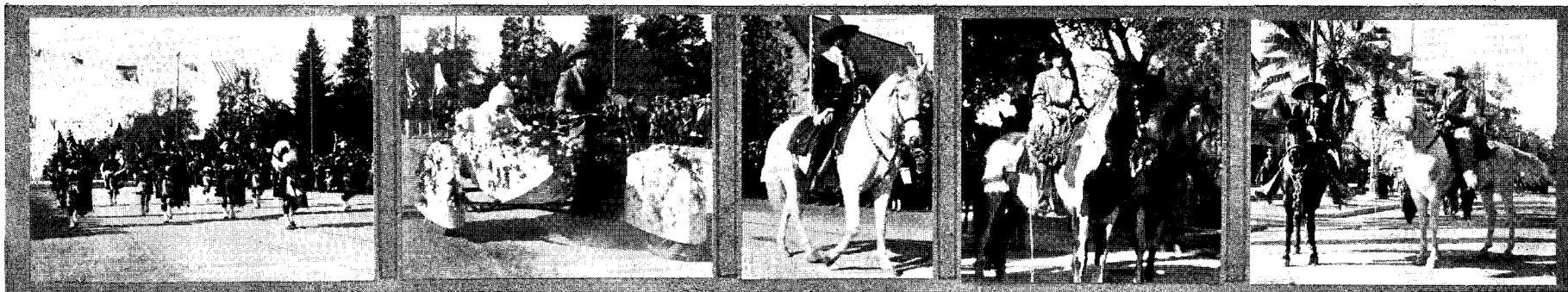
Pasadena Clubs Take Active Part in Great Pageant: Upper Right, Rotary Club Float Representing Pasadena's Name and Fame as Crown of the Valley; Kiwanis Club Presents Representation of Historic Adobe Flores; At Right, Lions' Club Depicts Old Mill as It Was in Days of Spanish and Mexican Regime.



Elk Lodges of Southern California Join in Pageant: Illustrations Show Floats of Huntington Park Lodge, Orange County Lodges, Santa Monica Lodge, Redlands Lodge, Imperial County Lodges and Glendale Lodge, while Inset Portrait is that of James G. McFarland, Grand Exalted Ruler of Elksdom, in Whose Honor this Division Was Arranged.



Symbolism of Benevolent and Protective Order of Elks Is Seen: Illustrations Are Alhambra Lodge Float, an Antlered King on Another Elk Float, Pasadena Lodge Float; Santa Monica Lodge Float; Los Angeles Lodge Float, Typical Symbolic Clock, a Defiant Elk, Whittier Lodge and Long Beach Lodge.



Kilties Band—A Modern Parambulator—El Caballero—Waiting for the Start—Hobart Bosworth and Blanche Tuck Davis.

Class K, individual historical characters: First prize, James M. Williams; second, G. R. Wellbaum; third, Louise Wellbaum.

Class L, one-horse or two-horse vehicles; No entries.

Class M, one-pony or two-pony vehicles; First, Thelma, Robert, Norman and Edwin Jaeger; second, Lucile Van Damme.

Class N, municipal floats: No entries, such floats being entered in other classes.

Class O, saddle horse, lady rider: First, Miss Maud Banks; second, Mrs. Ruth Johnson; third, Miss Doris G. Ray. Miss Banks also won the Col. W. J. Hogan prize for the best horse in the parade. Miss Banks was riding Confidence.

Class F, saddle horse, gentleman rider: First, Henry J. Stevens, second, Jose Gonzales; third, George Hester.

Class Q, Shetland pony, boy or girl rider: First, Millicent Marie Murdock; second, Marguerite Rippe. No third prize.

Class R, saddle pony, boy or girl rider: First, Margaret Barry; second, Flora L. Bestor.

Class S, novelties: First, Charles F. Young; second, Harley-Davidson agency; third, Stanley Milne.

Pasadena's Rose Bowl Has Scenic Setting in the Arroyo Seco

FOR many years the Tournament of Roses was held at Tournament Park, at the corner of Wilson avenue and California street. With the advent of the East-West football game, the old field with its low grandstands proved totally inadequate. With resolution, the directors of the Tournament Association set themselves to the task of providing a stadium which would be adequate to all future needs.

Selecting one of the most picturesque sites in Southern California in the level valley of the Arroyo Seco, the Association in 1922 undertook to finance and construct the stadium. Their efforts met with success through the support of many individuals and organizations. Late in the same year the stadium was completed and the big game of January 1, 1923, was played there.

The stadium was constructed half by excavation and half by embankment, the entire tier of seats being based on solid earth. Twenty large tunnels give access to the stadium, making it possible to fill or empty the gigantic bowl in a very short space of time.

The stadium had not long been built when by common consent it was christened the "Rose Bowl," although no such designation has been attached to it formally. Improvements now in progress will make it a Rose Bowl indeed, with climbing roses growing over the exterior earth walls.

Seats are now provided for well over 50,000 spectators and the stadium is so planned that additional seats can be added with little difficulty.

Surrounding the noble structure is the great Arroyo Seco park, owned by the City of Pasadena and now undergoing development which will make it one of the finest parks of its kind. No effort will be made to introduce a formal park plan but rather to enhance the natural beauty along lines that will be in keeping with the rugged contour of the land.

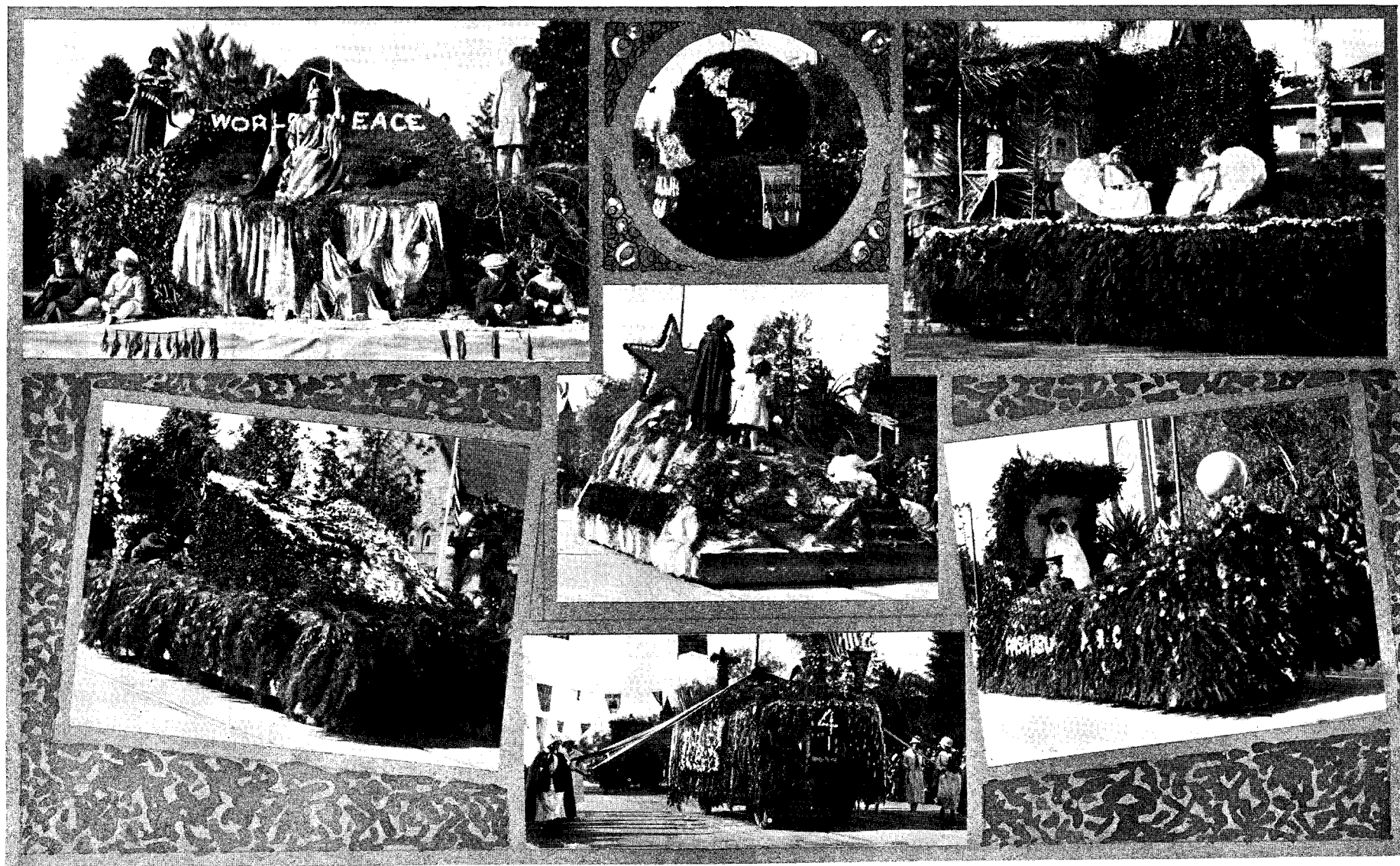
Within the year which has just closed, the city has constructed a notable system of roadways leading to the stadium, so that it is now possible to reach the scene of the Tournament athletic event without undue congestion of traffic. The last of these roads, connecting with Colorado street at the west end of the Colorado street bridge was completed only a few days before the present New Year's Day celebration. The new roadways are wide, and ample free parking space is provided by the city near the stadium.

Not far from the site of the stadium, to the south, lies Brookside Park, Pasadena's most popular playground, where hundreds of picnics, large and small, are held every year and where many thousands of persons annually patronize the two swimming pools.

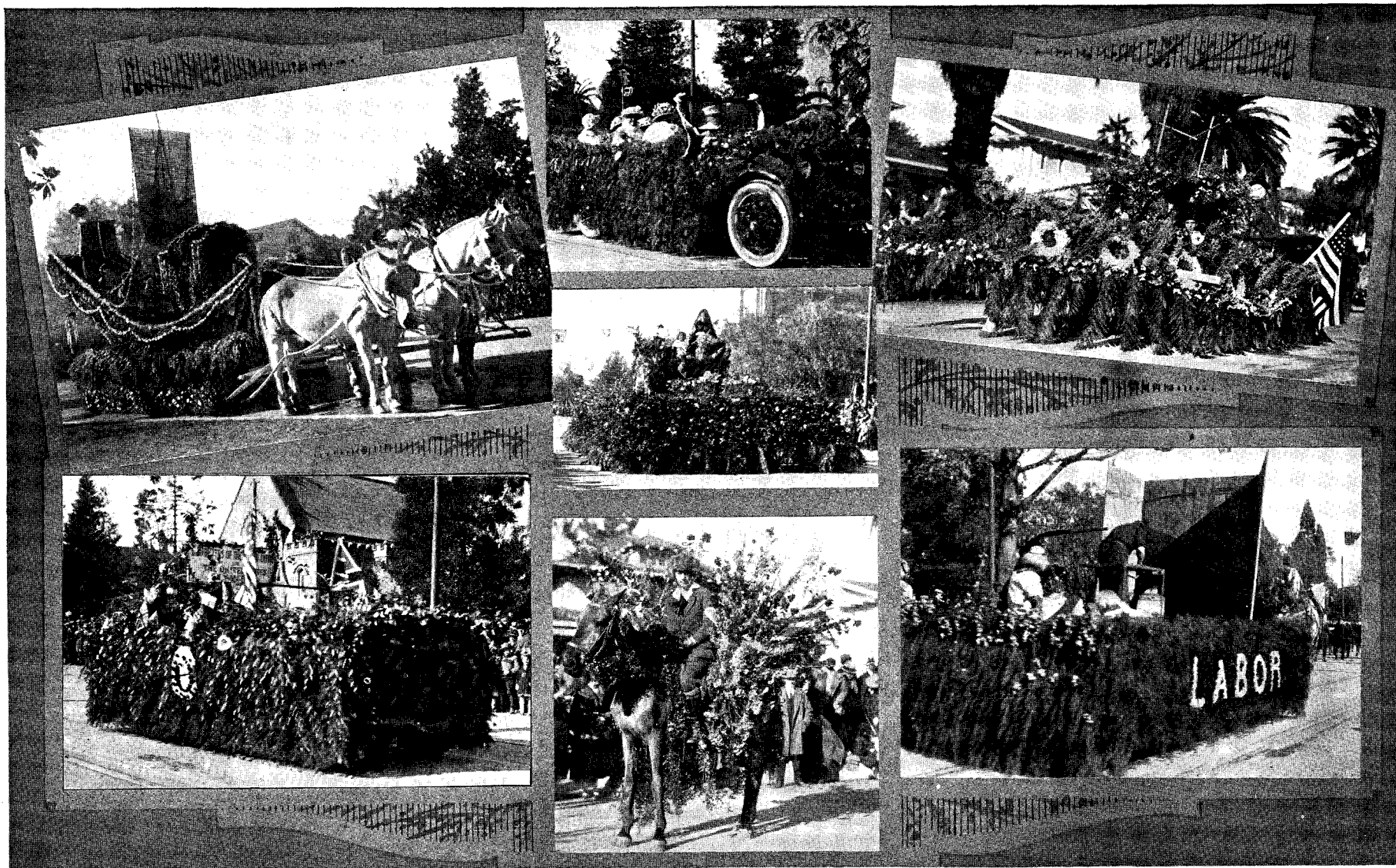
Eventually, the entire Arroyo Seco from Los Angeles through South Pasadena and upward through Pasadena to the mountains will be one great park. The three cities are co-operating toward this end and already the city of Pasadena has practically completed its share through the gradual acquisition and improvement of land over a considerable period of years.



Typical Entries in Historical Division: Upper Left, Tally-ho of Valley Hunt Club; Upper Right, Floral Ploer on Float Entered by Pasadena Pioneers' Society; Lower Left, Float Entered by Daughters of American Revolution, Showing First American Flag in California; Lower Right, First Schoolhouse, by Indiana Colony and Parent-Teacher Federation



Floats of Wide Variety Entered in Today's Pageant: In Order as Seen, Left to Right, Pacific Palisades, Churches of Pasadena, First Church of the Nazarene, Pasadena Boy Scouts, Salvation Army, Pasadena Chapter of the American Red Cross; Below, Angelus Temple.



Symbolism and Artistry Seen in Many Floats: In Order as Seen, Left to Right, Hotel Raymond, Woman's Civic League, Entry of the Jaeger Children, Daughters of the American Revolution; Daughters of the British Empire, a Basket of Posies, Pasadena Board of Labor.



Pretty Pony Cart—B. O. Kendall on His Mount—M. S. Pashgian Has Gorgeous Trappings—Miss Maud Banks—A Turkish General.

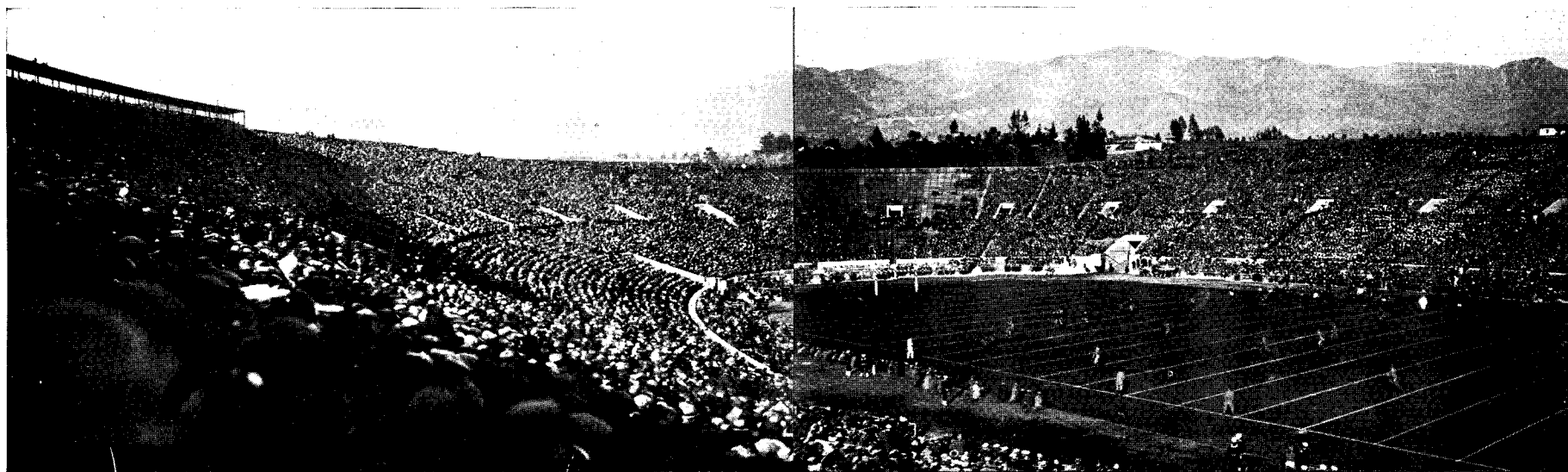
SCORES OF PREVIOUS EAST-WEST FOOTBALL GAMES AT PASADENA

Year	
1916	Brown University, 0; Washington State College, 14.
1917	University of Pennsylvania, 0; University of Oregon, 14.
1918	Mare Island 19; Camp Lewis, 7.
1919	Great Lakes Naval Training Station, 17; Mare Island Marines, 0.
1920	Harvard, 7; University of Oregon, 6.
1921	Ohio State University, 0; University of California, 28.
1922	Washington and Jefferson, 0; University of California, 0.
1923	Pennsylvania State College, 3; University of Southern California, 14.

NAVY:
Taylor
Clyde
Carney
Matthews
Levinsky
Shewell
Brown
McKee
Cullen
Devens
Shapley

THE LINE-UP
L.E.R.
L.T.R.
L.G.R.
C.
R.G.L.
R.T.L.
R.E.L.
Q.
R.H.L.
L.H.R.
F.

WASHINGTON
Hall
Petrie
Bellman
Walters
Bryan
Kuhn
Dubois
Abel
Wilson
Ziel
Tesreau





Beautiful and Artistic Details Help to Make the Tournament Parade Interesting to the Spectator, Who Enjoys the Attractive Features of Every Float as the Procession Passes. Pretty Girls in Graceful Costumes Against a Background of Fragrant Flowers Lend a Note of Charm to Effect, and Many Floats Repay Inspection



Joan of Arc in Silver Armor Heads Patriotic Entry Made by Alhambra. Equestrians Prominent in the Parade, Riding Splendid Horses Decorated with Flowers

PASADENA BANKERS—What the bankers of Pasadena think of prospects for the coming year was shown by the golden horn of plenty which constituted their entry in the parade. The big cornucopia was mounted on a float on which the name "Pasadena Bankers" was carried out in calendars and marigolds. At each corner hung baskets of gold and lavender.

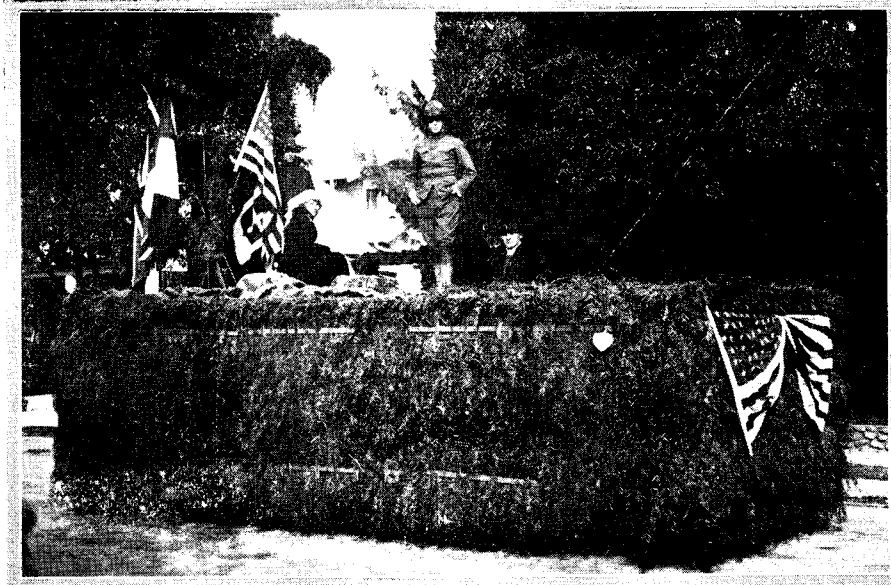
FIRE DEPARTMENT—Fire Chief Clifford headed the fire department entry, riding in his decorated roadster and accompanied by his daughter, Miss Edith Clifford. Other entries from the department were an automobile chemical, an automobile combination chemical and hose wagon, and an aerial truck on which Bob Overstreet rode as Uncle Sam. All the entries were artistically and lavishly decorated with flowers from the municipal nurseries.

NORSE WARRIOR MAID—Miss Carleen Murphy represented a Norse warrior maiden, wearing a leopard skin over a corselet of steel, and carried a shield. Her decorations were green and yellow.

KNIGHTS OF COLUMBUS—A war scene was depicted on the float entered by the Knights of Columbus. A Red Cross nurse was aiding wound-

ed soldiers, while a Knights of Columbus secretary stood nearby. The body of the float was decorated with roses, smilax and pampas plumes, and repre-

sented a section of a battlefield. Those riding were Miss Mary Fagan, James Barrett, Francis MacLaughlin and Nelson Cardinal.



Knights of Columbus Enter Float That Pictures Scene of Mercy During Battle

EQUESTRIAN DIVISION—The equestrian division included many riders mounted on fine horses. They were W. H. Whitcomb, who acted as marshal; Mrs. B. M. Blackman, Miss Mabel Smith, Miss Margaret Foster, Miss Mary K. Burnes, Mrs. Clifford Gates, Charles Mavis, Mrs. Anna Stevens, Miss Marion Moir, Mr. Bergman, G. R. Wellbaum, Arshag Kerskian, James J. Britt, Miss Elizabeth Wheeler, Miss Elizabeth Russell, Miss Sue Cleveland. All the horses were decorated with flowers.

PRIZE WINNERS—The prize winners in the various classes were as follows:

Class A, Civic Bodies—Long Beach, first; San Diego, second; Los Angeles Chamber of Commerce, third; San Bernardino National Orange Show, fourth; South Pasadena, fifth; San Fernando, sixth.

Class B, Hotels—Hotel Maryland, first; Hotel Huntington, second.

Class C, Automobiles—Mrs. C. C. Tanner, first; Will M. Glass, second; Realty Dealers, third.

Class D, Automobiles, Two Persons—Transfer companies, first; Lieut. Jackson Kendall, second; Carlos Doane, third.

Class E, Electrics—Automobile Dealers, first.

Class F, Commercial Floats—Pasadena Bankers, first.



Artistic and Effective Is Floral Basket, Part of Entry Made by Pasadena Merchants' Association. This Basket of Flowers with Its Pretty Occupant Is One of Two Floats Which Flanked a Central Float, Also Lavishly Bedecked with Flowers, and Which Are Joined to It by Satin Ribbons, with Which Girls Drive Central Car



Splendid Horses Ridden by Men and Women Excite Interest in These Days of Automobiles When Fine Horses Are Less Often Seen. Flowers Adorn Their Steeds

much attention. One of the handsome closed cars of the Tanner service was all but hidden beneath a canopy of asparagus ferns and smilax and other greenery, intermingled with myriads of violets and pink carnations. At each corner of the frame work that encased the car was suspended an artistically filled hanging basket of choicest violets. Riding were Mrs. C. C. Tanner and Mrs. A. J. Hosking, with liveried drivers.

FLORAL GUN—A six-inch gun, a floral replica of the guns used in coast defense, was entered by Lieut. Jackson Kendall. The gun was mounted on Lieut. Kendall's machine and was made of smilax, with poinsettia flame at its mouth. The coast artillery emblem was worked out on the sides in flowers. Miss Dorothy Davids rode with Lieut. Kendall, and little Bela Otis Kendall, Jr., rode on the back in full uniform.

TRANSFER COMPANIES—Representing the transfer companies of Pasadena, was an attractively decorated roadster. The body of the car was decorated with marigolds over smilax and outlined with asparagus plumosus fern. Hundreds of golden blossoms were used in the making the entry one of the most effective in the line of march. Those riding were Grant Orth and Miss Zilla Harris.

AUTOMOBILE DEALERS—Pasadena automobile dealers were represented by an electric coupe, which could hardly be identified as such a

conveyance, however, so completely was it concealed beneath red carnations, poinsettias and crimson ribbons, set on a smilax background. The body

of the coupe was of gold acacia. Riding were the Misses Ruth Mason, Florence Coombes, Lillian Landgard and Harold Coombes.

MUSTARD BLOSSOMS—Mrs. J. W. Chapman and Mrs. N. H. Mills-paugh rode in a car decorated with sprays of mustard blossoms, combined with eucalyptus branches and ivy.

During the parade a number of white pigeons were released from this automobile, small flags attached to the pigeons designating the different Allies.

SILVER MAID—Flags of the Allied nations, together with pink and white flowers and shields, were used by Carlos Doane on his entry, the famous "Silver Maid" roadster. Mr. and Mrs. Doane.

WHITTIER STATE SCHOOL—Whittier State school presented its usual novel and comprehensive float, the main machine being preceded by the school band and a number of the cadets in uniform marching. On the float, proper, was depicted an ideal home scene, in the yard of which was a mother and several boys, with the usual scenes around the home. The truck on which the building was located was profusely decorated with poinsettias and greenery.



Whittier State School Sends Entry Representative of Ideals and Purposes

TOURNAMENT OF ROSES, PASADENA - 1924