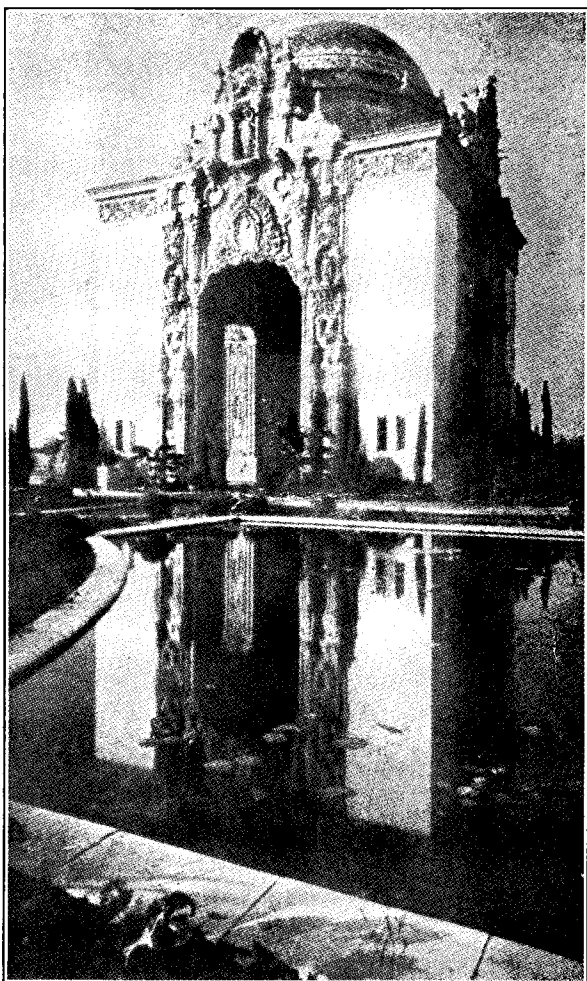


# Valhalla

## MEMORIAL • PARK

AMERICA'S FINEST CEMETERY



*VALHALLA, according to Scandinavian mythology, was the happy place where the departed spent their days in everlasting peace.*

PROTECTED BY A PERPETUAL CARE  
FUND OF MORE THAN \$200,000.00 ON  
DEPOSIT IN TRUST WITH BANK OF  
AMERICA

DRY SOIL

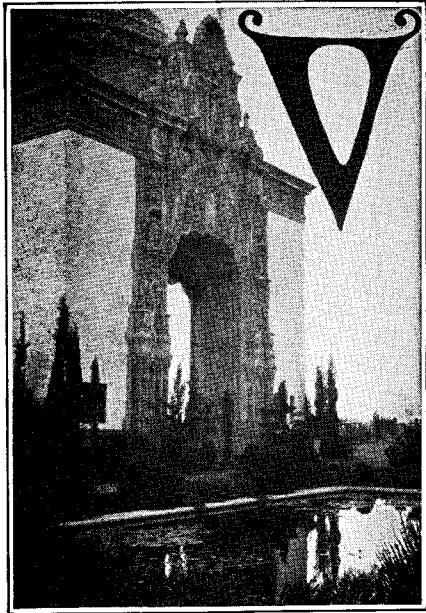
Valhalla

SWEEPING LAWNS

Valhalla

PEACEFUL DIGNITY

Valhalla



VALHALLA, the hallowed beauty spot of San Fernando Valley, is an everlasting memorial to the love and reverence for those who have passed on.

Here is no cemetery in the ordinary sense of the word...no jumble of weather-stained and neglected tombstones, many of them over-grown with weeds.

Instead, one great, inspiring monument of marble and mosaic, rising to a height which dominates the valley, and serves as a fitting memorial to all.

The great PORTAL OF VALHALLA, serene in beauty which will endure through ages, stands, marking and glorifying the last resting places of your loved ones, a perfect expression of eternal life conquering death.

Stately trees and shrubbery frame it. Lovely pools reflect its splendor. No wonder that thousands come to marvel at this realization of an ideal memorial park.

DRY SOIL IS A CEMETERY'S MOST IMPORTANT ASSET

.... But all Cemetery Property is not Dry

★ Of first consideration in the selection of a family memorial is the condition of the soil. It is of paramount importance that it be dry. It requires little imagination to picture the burial of a loved one in muddy clay and on sloping land that is subject to continual seepage and erosions. Oftentimes one is carried away by outward appearances. Don't be misled—investigate the soil.

Ask your Mortician this important question: Is the Cemetery property that I am about to bury my beloved one in Dry?

In Valhalla Memorial Park you will find Warm, Dry, Sandy Soil. This great Park is beautifully improved and protected by a fund of over \$200,000.00, held in an *irrevocable* trust, by the Bank of America. The principal of this fund can never be touched. Nor can the income therefrom be used for any other purpose than the upkeep of Valhalla.

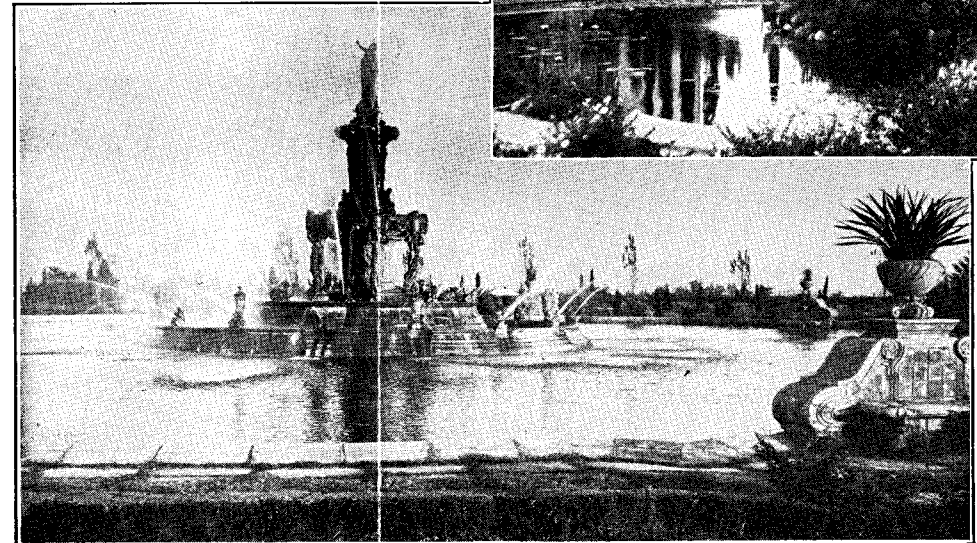
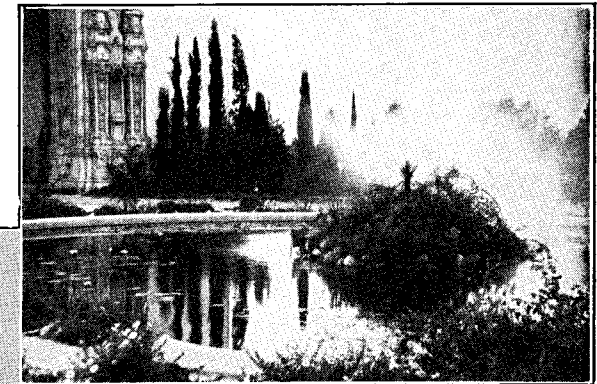
A SMALL PAYMENT DOWN and a SMALL PAYMENT EACH MONTH

Buy a choice lot in Valhalla and gives to you security that you cannot obtain otherwise.

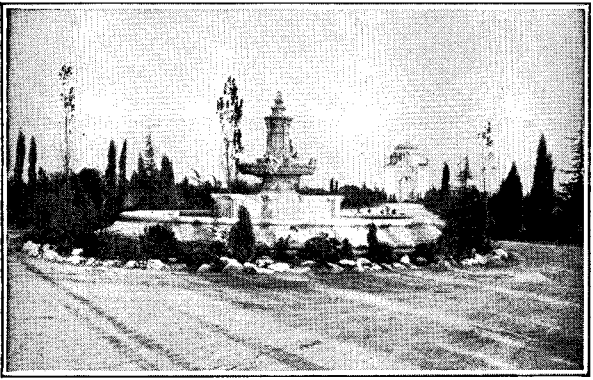
**A Protection All Should Provide Now**  
"The wise look into the future." As the pharaohs of ancient Egypt early in life prepared the pyramids which were to house their mortal remains, and, the world over, families adopted the custom of selecting their burial-place long before it would be needed, so today, the fine thing is to face the inevitable and provide for it in a manner which represents a wise choice, unmarred by haste or the needs of an emergency.

**Lightening the Burden of Sorrow**  
Too often the selection of a burial place made at the hour of death is made hastily and not too well. Coming at a time when long continued illness has brought financial embarrassment it may prove the cause of much mental anguish. How much better it is to investigate now, discuss the matter with the members of the family, and arrange for the family resting-place now when the cost is low and it may be paid for without undue hardship on terms by the Valhalla Plan.

**Valhalla Prices Are Low, NOW**  
It is natural that decided economies are effected if you will make your selection now in advance of actual need. The growth of Los Angeles, the expenses of improvements and maintenance of unsold sections are sure to increase prices as time goes on. In view of the great natural beauty of Valhalla, and the sums of money which have been invested in its various improvements, the cost of a lot in this memorial park is surprisingly low at this time.



To see the Valhalla Water-Lilies alone is worth the trip.



### ***Some Interesting Figures Which Show the Intrinsic Value of a Part-Ownership in Valhalla***

Your section shares in the ownership of the magnificent marble portals of Valhalla, completed at a cost of more than \$140,000. This edifice rises to the height of a seven-story building, ninety feet, and is flanked at its base by three reflecting pools.

In its construction there were used:

2,200,000 pounds of solid concrete. 50,000 pounds of structural steel.

4,000 square feet of Colorado Yule white marble, the finest quarried in North America. 5,500 cubic feet of sculptured art stone.

It is surmounted by a great mosaic tiled dome, and its interior is embellished with mural oil and gold leaf decorations by Peterson.

In it are tile and marble rest-rooms and offices with heavy bronze doors and window grills.

### ***The present development of the Valhalla grounds is shown by these figures:***

There are 50 miles of pipe in its sprinkler system, 11,250 sprinkler heads.

2,811,000 pounds of fertilizer were used. 11 tons of blue grass and clover seed. There are over 25,000 trees and shrubs and innumerable flowering plants.

There are two complete pumping plants, 75 and 100 H. P.; two motor mowers, equivalent to 56 men with hand mowers.

### ***Cremation***

You may bury the ashes of your loved ones in the Valhalla Catacombs for the total sum of \$15.00. This price includes the plot of ground and all expenses thereto, including perpetual care.

**There is no finer way of caring** for ashes and this price, \$15.00, procures for you the very choicest in peaceful, dignified ash interment. Terms \$1 down and \$1 per month.

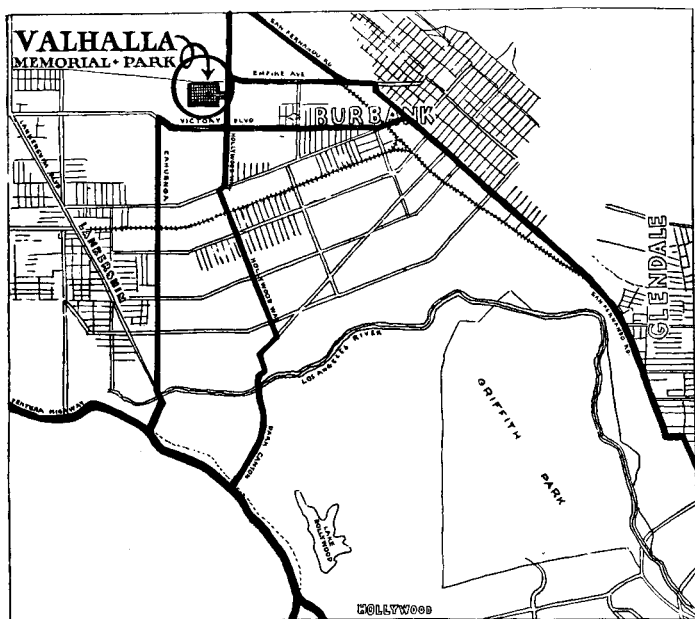
### ***Remember***

You may cremate the remains of your loved one in any crematory. Bring the ashes to Valhalla and you may inter them for the total sum of \$15.00. Phone HOLLYWOOD 1961 or Burbank 540 for additional information.

# Valhalla

## MEMORIAL • PARK

AMERICA'S FINEST CEMETERY



Visitors are cordially invited to take this scenic drive to the "showplace of San Fernando Valley." Just one request: Remember that these are sacred grounds, and **DRIVE SLOWLY** in the park.

### *How to Reach Valhalla*

Take San Fernando Road to Burbank, then Victory Blvd. to Hollywood Way, out Hollywood Way to Valhalla Drive.

Or—Through Cahuenga Pass to Dark Canyon Road, via Hollywood Way to Valhalla Drive.

Or—Take Pacific Electric or San Fernando Bus to Burbank. Inquire at the Portal Office, for information, to make interment arrangement, etc.

## *Valhalla Memorial Park*

AMERICA'S FINEST CEMETERY

J. E. OSBORNE, *President*

Burbank

California

(A Suburb of Los Angeles)

Phones: HOLLYWOOD 1961; Burbank 540

Indorsed, recommended and patronized by more than one hundred leading undertakers.