

# Robert J. Teall, Franklin high principal, widely experienced in educational field

PERSONALITY PORTRAITS BY JACK LINDSLEY

Since coming to the principalship of Highland Park's Franklin high school over four years ago, Robert J. Teall has rapidly assumed a prominent place in the life and affairs of this district.

Benjamin Franklin high school, with a present enrollment of

about 2300, sons and daughters from the homes of Highland Park, is building in the minds of the youth of this community that which will be the realities of tomorrow, in business, in government, in understanding, in attitude . . . That Highland Park high school students are excelling while at Franklin and are above average when opportunities of higher education are given, in the colleges and universities of Southern California, and that they know how to conduct themselves when they leave school, is due to the quality of the teaching staff at the local school, and to the smooth-running and efficient administration under Principal Teall and his predecessor C. B. Moore.

Principal Teall, contributor to several educational magazines and at present associate editor of the Los Angeles school journal, came to Franklin in 1934 from the principalship at Thomas Jefferson high

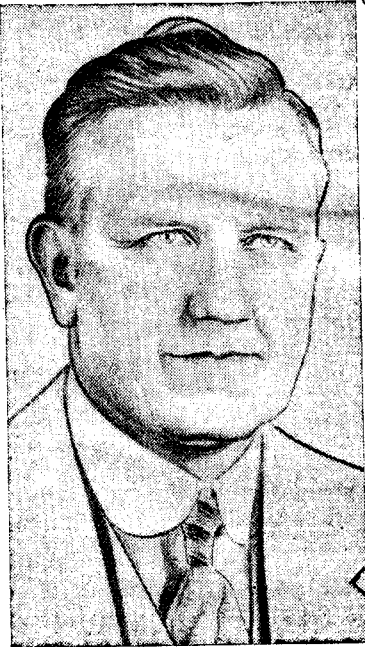
school. Previous to that time he had been vice principal at Venice high school.

Teall was born in Geneva, New York, and grew up in Sparta, Wisconsin, graduating from the Sparta high school. Following high school he entered and graduated from Beloit college in Beloit, Wisconsin. Graduate work has been taken at the University of Chicago, Stanford university, University of California, and the University of Southern California. His Master of Arts degree was awarded by the last-named school in 1926.

Teaching experience has includ-

ed mathematics in Beloit high school; mathematics in the Moline, Illinois, high school; supervisory in the government schools in the Philippine islands. Later he joined the Los Angeles city school system's teaching staff, and has taught at the Twenty-eighth street elementary school, and mechanical arts, Spanish and English at Gardena high school. In 1918 he went to the principalship of the Madera union high school, but in 1927 returned to the Los Angeles city educational system, going to Venice, then to the principalship at Jefferson and then to Franklin.

Mrs. Teall was a member of his college class at Beloit, and the marriage was performed in Manila, Philippine islands, during his work there. The Tealls have four children, three daughters, all married, and a son, a physician in Sacramento, and several grandchildren. They hold membership in the Highland Park Presbyterian church. Teall is a member of Madera Lodge 280, F. and A. M., and Phi Delta Kappa, educational fraternity. Mrs. Teall is a member of the Highland Park Ebell club. They reside at 2370 Fair Park avenue.



ROBERT J. TEALL

Highland Park News Herald