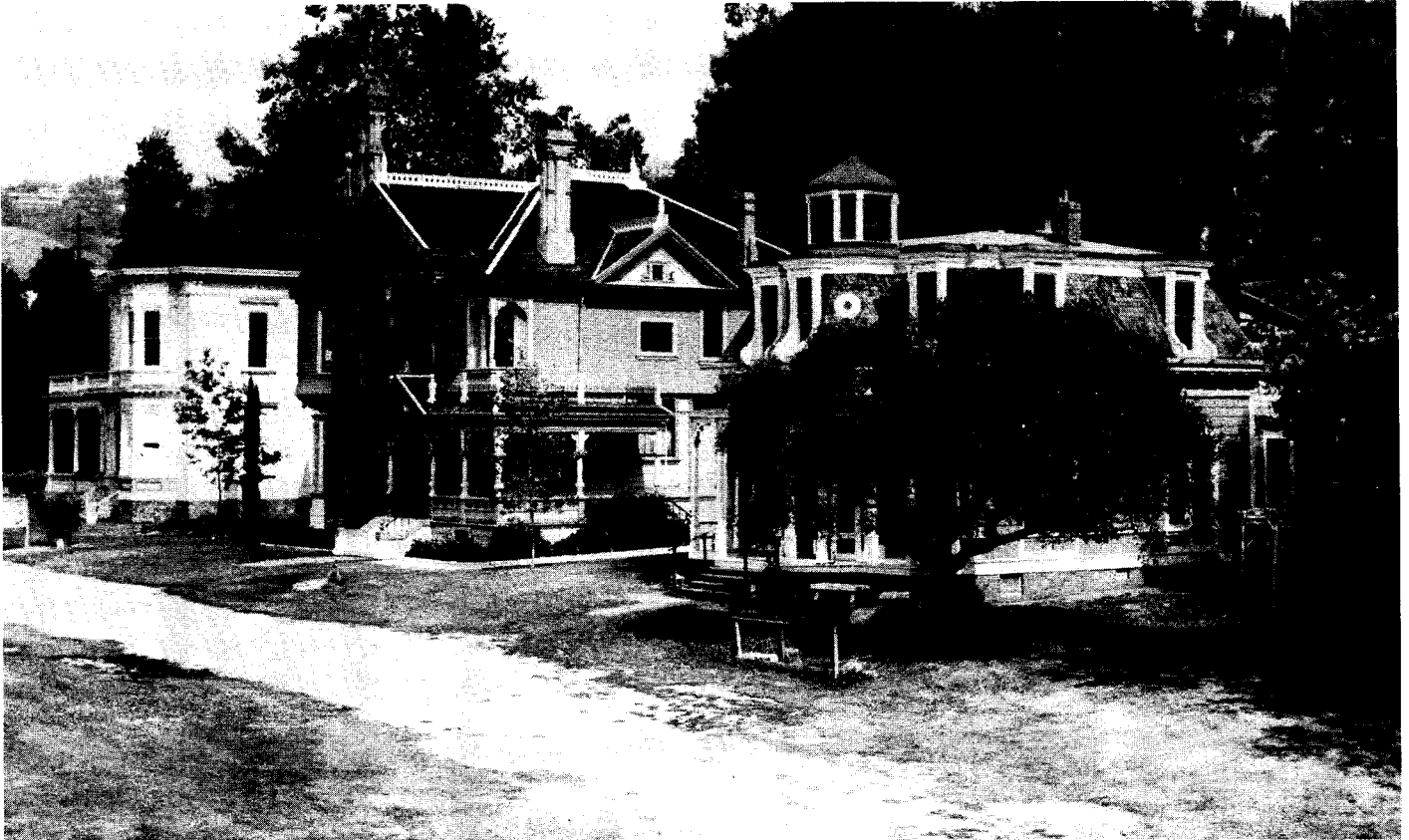




# HERITAGE SQUARE FACTS & PHOTOS

3800 Homer Street, Los Angeles, California • 90031 (213) 222-3150



photograph by Tom Meyer

HERITAGE SQUARE is located at 3800 Homer Street (Pasadena Freeway at Avenue 43), approximately three miles from the Los Angeles Civic Center. The location is easily accessible by freeway and visible to the thousands who travel the Pasadena Freeway (No. 11). It is also accessible by RTD Line #25.

Other historical attractions nearby are the Casa de Adobe, the Southwest Museum and the Lummis House.

HERITAGE SQUARE is a haven for historical and architectural landmarks which cannot be preserved at their original location. Although it is recognized that historic preservation at its best is that which takes place at the original site, the buildings moved to Heritage Square would otherwise have been lost to the bulldozer.

The ten-acre site is operated by the Cultural Heritage Foundation, a non-profit corporation established by the Los Angeles Cultural Heritage Board. The foundation, with an unlimited membership of citizens dedicated to the preservation and restoration of early Los Angeles landmarks, raises funds for the development of Heritage Square through private and public donations.

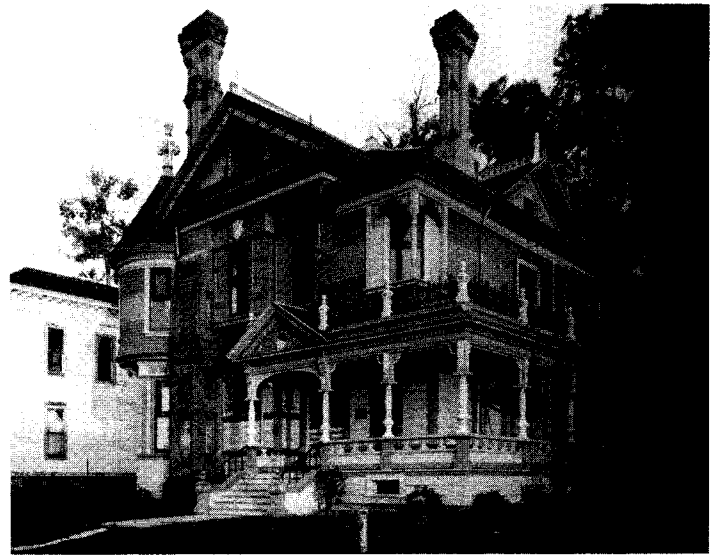
The land was made available by the Los Angeles City Department of Recreation and Parks and is being developed as an outdoor museum of original buildings from the period of 1865-1920: living reminders of the architectural heritage of Los Angeles and its environs.

The painstaking restoration work is being guided by the Heritage Square Committee, professionals giving of their time and expertise to develop the site as authentically as possible. There will be vintage street lights, a gazebo, gardens and landscaping and many other features of the Victorian period.



**HALE HOUSE**—shortly after its move to Heritage Square in 1970. It had been scheduled for demolition and was moved just four days before the deadline. Historic-Cultural Monument No. 40.

It is interesting to note that the move to Heritage Square was not its first. However, the original location is still unknown.



**HALE HOUSE**—following restoration is once again exuberant in ornamentation and detailing. Moved to Heritage Square from the southwest corner of Avenue 45 and Figueroa Street, it gained fame and "notoriety" when in 1974 it was painted in 39 colors for an advertising campaign. It now reflects the original colors it sported when it was constructed circa 1885.

The Queen Anne-Eastlake style residence boasts ornate, towering brick chimneys and extensive exterior woodcarving.

The Hale House is on the National Register of Historic Places.

photograph by Bruce Boehner



**HALE HOUSE DINING ROOM**—the museum quality restoration work received the prestigious A.S.I.D./Scalamandré Historic Preservation Excellence of Design Award.

photograph by Bruce Boehner



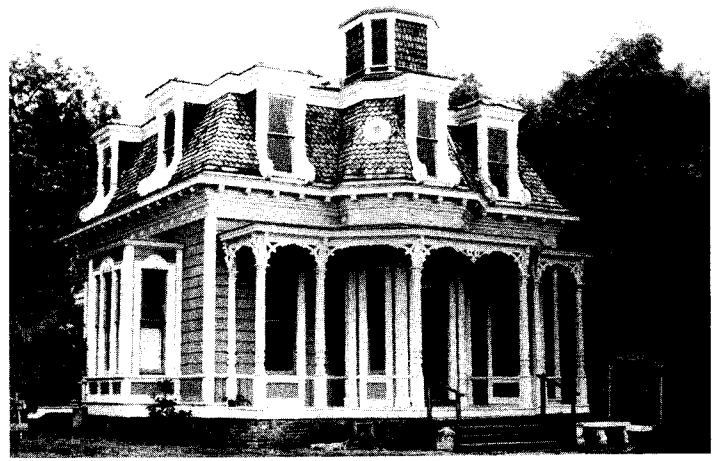
The restored Hale House library and front parlor as seen by thousands of visitors to Heritage Square.

Some of the furnishings now being displayed are obviously from the twentieth century and will be replaced with more appropriate items when they become available.

photograph by Tom Meyer



**VALLEY KNUDSEN GARDEN-RESIDENCE**—Historic-Cultural Monument No. 65 - moved from Johnston Street in Lincoln Heights in 1971. This was the building's third move.



**VALLEY KNUDSEN GARDEN-RESIDENCE**—named in tribute to the beloved founder of Los Angeles Beautiful, was built circa 1877 by cabinet maker Richard E. Shaw. Its style is described as . . . "a 19th century Mansard style residence - one of the last examples left in the Los Angeles area." The rare coral tree that stood at the original site was also moved to Heritage Square.

Note: The cupola, missing from the building for many years, was reproduced from early photographs and re-installed in May, 1982.

photograph by Tom Meyer



**LINCOLN AVENUE CHURCH**—Historic-Cultural Monument No. 245, was threatened with demolition when it was located in Pasadena. Sawn in half and with its steeple removed, the church building joined Heritage Square on February 10, 1981.

This 1897 Carpenter's Gothic architectural style church is an important addition to the square, where it will be used for meetings, exhibitions and cultural activities.

This picture was taken on May 7, 1982 when, with television cameras grinding, the restored steeple was re-installed.

As with all the other structures at Heritage Square, restoration work will proceed on the church as funds are available.



**BEAUDRY STREET HOUSE**—Historic-Cultural Monument No. 108, was moved to Heritage Square in 1974 when it was threatened with demolition by the construction of a computer center near Bunker Hill.

While restoration of this circa 1880's residence is in progress, the unusual combination of Italianate, East-lake and Queen Anne architecture is quite evident. The extensive handcrafted exterior and interior architectural details were executed by the original owner, John J. Ford, a well known woodcarver.

photograph by Tom Meyer

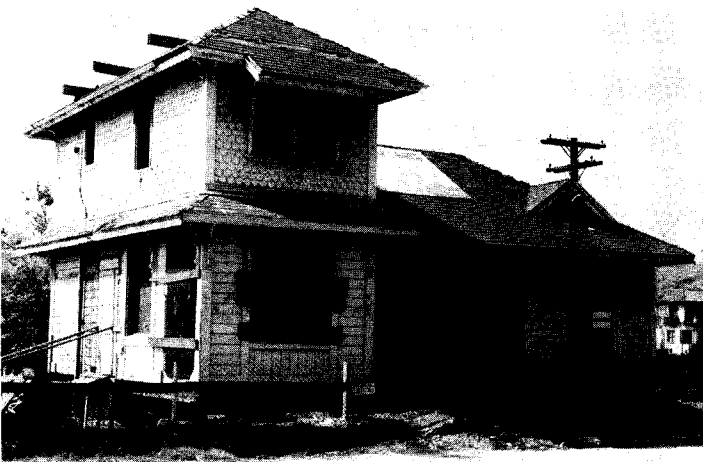


**MOUNT PLEASANT HOUSE**—Historic-Cultural Monument No. 98, still showing part of the stucco that covered the building when it was moved to Heritage Square in 1975 from Boyle Heights.



**MOUNT PLEASANT HOUSE**—Restoration in progress, the 1876 grand mansion of prominent lumber dealer William Hayes Perry is revealing some of the High Victorian Italianate style architecture which made it a landmark. It is being restored by the Los Angeles-Pasadena Committee, National Society of Colonial Dames of America for use as their headquarters and a house museum open to the public. The building is on the National Register of Historic Places.

photograph by Tom Meyer



**PALMS RAILROAD DEPOT**—Historic-Cultural Monument No. 22, shortly after its relocation in 1976. Previously located in the community of Palms in West Los Angeles, the building had been vacant and subjected to vandalism.



Once restored, the circa 1886 Palms Depot will serve as the Administration building at Heritage Square. Railroad memorabilia will be on display.

photograph by Tom Meyer



For information on days Heritage Square is open to the public, please call (213) 222-3150.

This brochure is published by the Los Angeles Cultural Heritage Board, Cultural Affairs Department, Room 1500, City Hall, Los Angeles, CA 90012.

November 1982