



**OUR POLICE PROTECTION**—Highland Park is protected by one of the most ably-supervised police departments in the metropolitan area. The entire force of the local police division is pictured above in a photograph taken several weeks ago during annual inspection.

## Local police division has 110 officers, detectives, workers

Highland Park police division, first organized in 1926 with a complement of 47 men, now rates as one of the finest police divisions in the city of Los Angeles.

At present a total of 110 police officers, detectives and civilian employees are based at the local station, 6035 York boulevard, under the command of Captain William O. Zink.

Of the total, 78 are police officers, 17 detectives, 10 juvenile officers, and five civilian employees.

### RECORD ENVIABLE

One of the crack small arms-experts in the nation, Lieutenant Emmett E. Jones, has charge of the Highland Park detectives who have an enviable record in solving many crimes which have occurred in this division over the years.

Sergeant C. A. Carlton heads the juvenile unit, and Charlotte Boelich is supervisor of the civilian employees.

Bounded on the west by the Los Angeles river, on the east by the cities of Pasadena, South Pasadena and Alhambra, on the south by Hollenbeck police division and county property, and on the north by the city of Glendale, Highland Park police division encompasses an area of 23.77

square miles. It is the fourth largest police division in the city of Los Angeles. In 1946 a population of 142,513 lived in this area, and it is estimated that close to 150,000 are now living here.

### NOT ALWAYS SO LARGE

Highland Park police division has not always been this large. When first organized in 1926, the division included only the community of Highland Park proper. The Eagle Rock area was included in the division when Eagle Rock transferred from independent city status to a part of Los Angeles. In 1935 in a reorganization of the city's police divisions, the Lincoln Heights division was eliminated and its jurisdiction split between Highland Park and Central divisions. In the process, the local division expanded to include the communities of Lincoln Heights and El Sereno.

### IMPORTANT ELEMENTS

Important elements of the Highland Park police division are the reserve police units and the deputy auxiliary police.

Reserve policemen in this division now number nearly 150 and are called upon to serve at parades, public gatherings, or any time the regular officers need additional support. Reserve policemen receive no pay and even have to purchase their own uni-



CAPTAIN WILLIAM O. ZINK

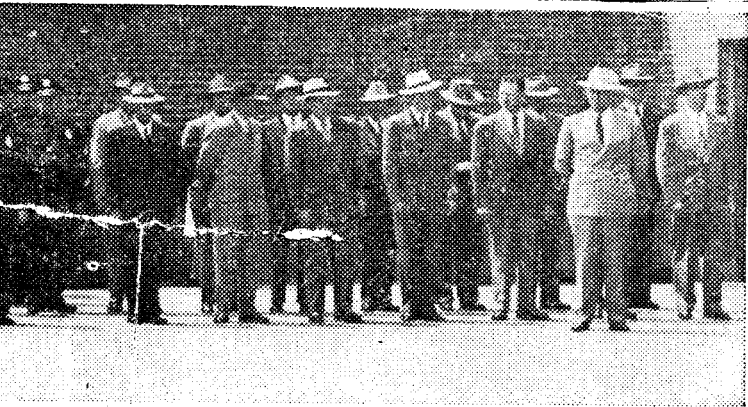
forms. Their only remuneration comes from a feeling of doing a good job of serving their community.

The reserve police unit of this division is under the command of Sergeant H. A. Dopp and is composed of residents of the Highland Park division.

### DAPS

The deputy auxiliary police, or DAPS as they are called, is an organization composed of boys and girls from the ages of 12 to 21. Under the Highland Park command of Officer E. N. Moore, Highland Park DAPS now count over 400 local youths in their membership. Athletic events, outings, and recreational activities are included in their program.

The present Highland Park sta-



on was built in 1926. The cap- floor. The second floor houses  
ains office, detective office and juvenile offices and DAP head-  
cord bureau are on the first quarters.