

PHASE OUT THE OLD—Construction is underway at Pacific Telephone's Highland Park central office on a two-story addition to house the Bell System's latest electronic switching system. In addition, the brown-brick building at 1206 N. Avenue 56 will be

refaced and a 15-foot high mural highlighting the community's heritage will grace the entire base of the structure. Estimated completion of the building is March, 1977.

The project will provide the installation of an electronic switching system (ESS) to be operational in 1978 and a mural around the base of the building highlighting Highland Park's heritage.

ESS is the most modern switching system in service today in the Bell System. The process was developed by Bell Telephone Laboratories and manufactured by Western Electric for Bell operating companies throughout the nation.

MURAL

The 15-foot high mural, which will run the entire length of the structure, was conceived by Barrio Planners of East Los Angeles. It was awarded a special commendation by the Los Angeles Bicentennial Committee for tracing Highland Park's history from 1880 to the present in pictures.

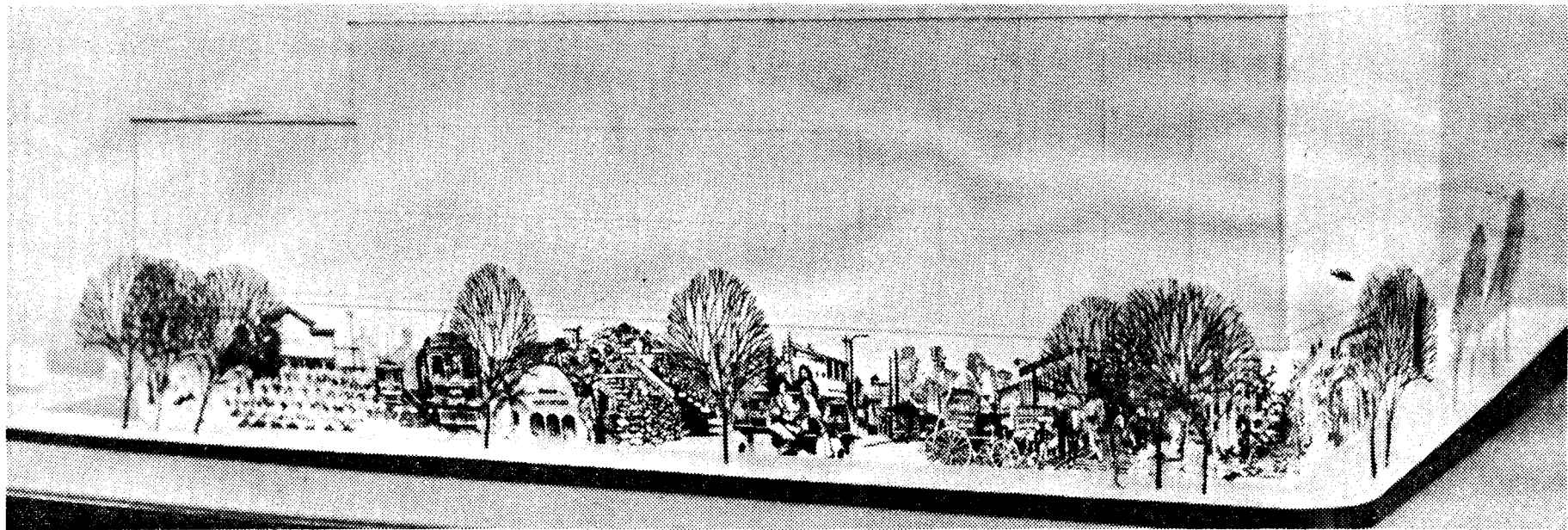
"A lot of research and planning went into the mural which depicts the Anglo and Mexican heritage of the city," says Frank Villalobos, a landscape architect for Barrio Planners in East Los Angeles.

"We have collected photographs and drawings dating back before the turn of the century including images of Teddy Roosevelt and Franklin D. Roosevelt who visited the area during their presidential terms," he says.

"There is also a picture of the town's first grocery store, the Arroyo Seco Park, Pacific Electric cars and the 1973 Franklin High football squad."

Barrio Planners has interwoven the past with the present in showing over 18 different views of Highland Park, Villalobos said. "The exact method used to transfer the images onto the building hasn't been decided yet, but the pictures will be of high contrast and defined in earth colors," Villalobos says.

The central office was constructed in the 1920s and is presently dotted with windows. When the refacing is completed windows will be gone and the entire building will be modernized with large slates of subdued hue. The construction will be undertaken by the R.J. Daum Company of Alhambra.



Remodel telephone building

1-10-76

When Pacific Telephone's Highland Park central office expansion is completed next year the 50-year-old building will sport a new look. Construction has just begun on a two-story addition (shown at left) to house a new electronic switching system to serve the community. Also, the existing structure will be refaced and a

15-foot high mural will extend around its base. Included in the panoramic scene that reflects Highland Park's history will be the old and the new from the long since gone "red cars" to the 1973 Franklin High football team.